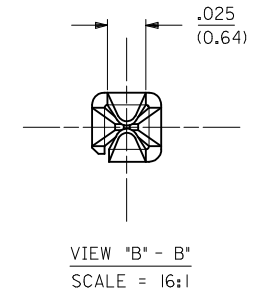
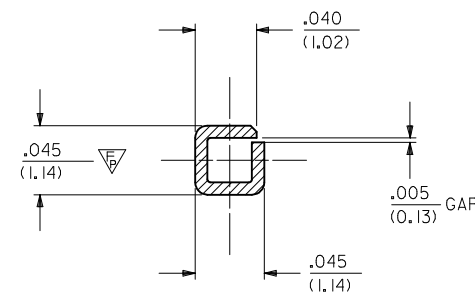
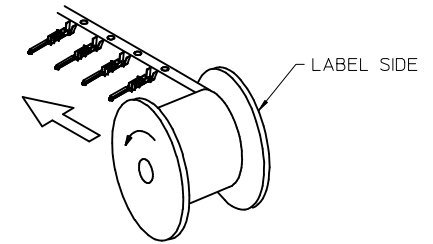


NOTES:

- 1- MATERIAL: PHOSPHOR BRONZE ALLOY
- 2- FINISH:
  - (A) - SELECTIVE GOLD PLATE .000030/(0.00076)MIN., AND SELECTIVE TIN .000100/(0.00254) OVER .000050/(0.00127) NICKEL OVERALL.
  - (B) - .000100/(0.00254) TIN OVER .000050/(0.00127) NICKEL.
- 3- PRODUCT SPECIFICATION: TBD.
- 4- PACKAGING INFORMATION: SEE CHART FOR CHAIN PK-5556-003 FOR LOOSE TERMINALS
- △ - MEASURING POINT FOR PLATING THICKNESS.
- ▽ - 6-TERMINAL CANNOT BE USED IN 42475 OR 43558 HOUSINGS.
- △ - GOLD PLATING AREA.
- △ - TIN PLATING AREA.

RIGHT TO LEFT  
UNREELING



SECTION "A - A"  
SCALE = 16:1

30490-2012	B	LOOSE		4000	18-24
30490-2002		CHAIN	RIGHT TO LEFT		
30490-1012	A	LOOSE		4000	18-24
30490-1002		CHAIN	RIGHT TO LEFT		
ITEM NO.	PLATING	FORM	UNREEL DIRECTION	QTY. PER REEL	WIRE GAGE

UPDATE TABLE EC NO: UCP2014-3954 DRAWINGUYEN 2014/04/07 CHKD:JBELL 2014/04/07 APPR:FSMITH 2014/05/16 REV: E4	QUALITY SYMBOLS	GENERAL TOLERANCES (UNLESS SPECIFIED)	DIMENSION STYLE	SCALE	DESIGN UNITS	THIRD ANGLE PROJECTION
	▽=0	mm INCH	IN/MM	8:1	INCH	
	▽=0	4 PLACES ± --- ± ---	DRAWN BY DATE			TITLE
	▽=2	3 PLACES ± --- ± .010	BBW 92/ 1/22	CHECKED BY DATE		MALE CRIMP TERMINAL MINI-FIT STYLE
		2 PLACES ± 0.25 ± .015	APPROVED BY DATE			
		1 PLACE ± 0.38 ± ---	JAMARA 2011/01/28			
		0 PLACE ± ±	MATERIAL NO.			
		ANGULAR ± 5 °	SEE CHART	DOCUMENT NO.		
		DRAFT WHERE APPLICABLE MUST REMAIN WITHIN DIMENSIONS	SIZE C	SD-30490-***2		SHEET NO. 1 OF 1
				THIS DRAWING CONTAINS INFORMATION THAT IS PROPRIETARY TO MOLEX INCORPORATED AND SHOULD NOT BE USED WITHOUT WRITTEN PERMISSION		