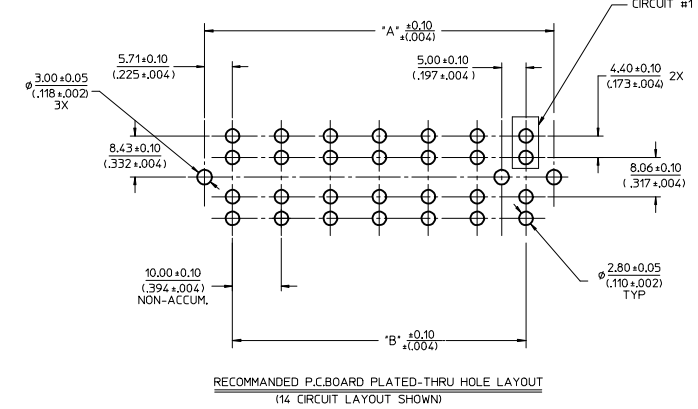
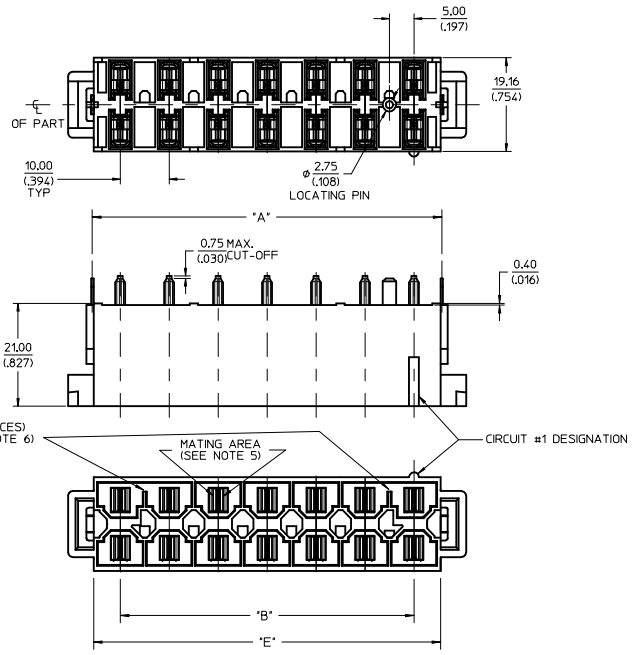
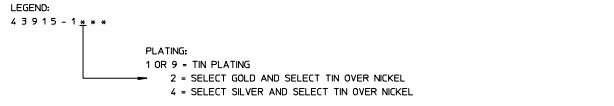


MATERIAL NUMBER	CIRCUITS	DIM.'A'	DIM.'B'	DIM.'C'	DIM.'D'	DIM.'E'	PCB THICKNESS	QUANTITY OF POLARIZING SLOTS	TERMINAL PLATING	STATUS
4395-1201	6	31.41/(1.237)	20.00/(.787)	3.50/(.137)	1.80/(.071)	30.90/(1.217)		1		
4395-1202	8	41.41/(1.630)	30.00/(1.181)	3.50/(.137)	1.80/(.071)	40.90/(1.610)	1.57/(.062)	2		
4395-1203	10	51.41/(2.024)	40.00/(1.575)	3.50/(.137)	1.80/(.071)	50.90/(2.004)		2		
4395-1204	12	61.41/(2.418)	50.00/(1.969)	3.50/(.137)	1.80/(.071)	60.90/(2.398)		2		
4395-1205	14	71.41/(2.811)	60.00/(2.362)	3.50/(.137)	1.80/(.071)	70.90/(2.791)		2		
4395-1206	6	31.41/(1.237)	20.00/(.787)	5.10/(.201)	2.60/(.102)	30.90/(1.217)		1		
4395-1207	8	41.41/(1.630)	30.00/(1.181)	5.10/(.201)	2.60/(.102)	40.90/(1.610)	2.36/(.093)	2		
4395-1208	10	51.41/(2.024)	40.00/(1.575)	5.10/(.201)	2.60/(.102)	50.90/(2.004)		2		
4395-1209	12	61.41/(2.418)	50.00/(1.969)	5.10/(.201)	2.60/(.102)	60.90/(2.398)		2		
4395-1210	14	71.41/(2.811)	60.00/(2.362)	5.10/(.201)	2.60/(.102)	70.90/(2.791)		2		
4395-1211	6	31.41/(1.237)	20.00/(.787)	5.10/(.201)	3.40/(.134)	30.90/(1.217)		1	SELECT GOLD (SEE LEGEND)	ACTIVE
4395-1212	8	41.41/(1.630)	30.00/(1.181)	5.10/(.201)	3.40/(.134)	40.90/(1.610)		2		
4395-1213	10	51.41/(2.024)	40.00/(1.575)	5.10/(.201)	3.40/(.134)	50.90/(2.004)	3.18/(.125)	2		
4395-1214	12	61.41/(2.418)	50.00/(1.969)	5.10/(.201)	3.40/(.134)	60.90/(2.398)		2		
4395-1215	14	71.41/(2.811)	60.00/(2.362)	5.10/(.201)	3.40/(.134)	70.90/(2.791)		2		
4395-1216	6	31.41/(1.237)	20.00/(.787)	8.30/(.327)	6.58/(.259)	30.90/(1.217)		1		
4395-1217	8	41.41/(1.630)	30.00/(1.181)	8.30/(.327)	6.58/(.259)	40.90/(1.610)		2		
4395-1218	10	51.41/(2.024)	40.00/(1.575)	8.30/(.327)	6.58/(.259)	50.90/(2.004)	6.35/(.250)	2		
4395-1219	12	61.41/(2.418)	50.00/(1.969)	8.30/(.327)	6.58/(.259)	60.90/(2.398)		2		
4395-1220	14	71.41/(2.811)	60.00/(2.362)	8.30/(.327)	6.58/(.259)	70.90/(2.791)		2		
4395-1221	10	51.41/(2.024)	40.00/(1.575)	3.50/(.137)	2.60/(.102)	50.90/(2.004)	2.36/(.093)	2		
4395-1401	6	31.41/(1.237)	20.00/(.787)	3.50/(.137)	1.80/(.071)	30.90/(1.217)		1		
4395-1402	8	41.41/(1.630)	30.00/(1.181)	3.50/(.137)	1.80/(.071)	40.90/(1.610)	1.57/(.062)	2		
4395-1403	10	51.41/(2.024)	40.00/(1.575)	3.50/(.137)	1.80/(.071)	50.90/(2.004)		2		
4395-1404	12	61.41/(2.418)	50.00/(1.969)	3.50/(.137)	1.80/(.071)	60.90/(2.398)		2		
4395-1405	14	71.41/(2.811)	60.00/(2.362)	3.50/(.137)	1.80/(.071)	70.90/(2.791)		2		
4395-1406	6	31.41/(1.237)	20.00/(.787)	5.10/(.201)	2.60/(.102)	30.90/(1.217)		1		
4395-1407	8	41.41/(1.630)	30.00/(1.181)	5.10/(.201)	2.60/(.102)	40.90/(1.610)	2.36/(.093)	2		
4395-1408	10	51.41/(2.024)	40.00/(1.575)	5.10/(.201)	2.60/(.102)	50.90/(2.004)		2		
4395-1409	12	61.41/(2.418)	50.00/(1.969)	5.10/(.201)	2.60/(.102)	60.90/(2.398)		2		
4395-1410	14	71.41/(2.811)	60.00/(2.362)	5.10/(.201)	2.60/(.102)	70.90/(2.791)		2		
4395-1411	6	31.41/(1.237)	20.00/(.787)	5.10/(.201)	3.40/(.134)	30.90/(1.217)		1	SELECT SILVER (SEE LEGEND)	ACTIVE
4395-1412	8	41.41/(1.630)	30.00/(1.181)	5.10/(.201)	3.40/(.134)	40.90/(1.610)		2		
4395-1413	10	51.41/(2.024)	40.00/(1.575)	5.10/(.201)	3.40/(.134)	50.90/(2.004)	3.18/(.125)	2		
4395-1414	12	61.41/(2.418)	50.00/(1.969)	5.10/(.201)	3.40/(.134)	60.90/(2.398)		2		
4395-1415	14	71.41/(2.811)	60.00/(2.362)	5.10/(.201)	3.40/(.134)	70.90/(2.791)		2		
4395-1416	6	31.41/(1.237)	20.00/(.787)	8.30/(.327)	6.58/(.259)	30.90/(1.217)		1		
4395-1417	8	41.41/(1.630)	30.00/(1.181)	8.30/(.327)	6.58/(.259)	40.90/(1.610)		2		
4395-1418	10	51.41/(2.024)	40.00/(1.575)	8.30/(.327)	6.58/(.259)	50.90/(2.004)	6.35/(.250)	2		
4395-1419	12	61.41/(2.418)	50.00/(1.969)	8.30/(.327)	6.58/(.259)	60.90/(2.398)		2		
4395-1420	14	71.41/(2.811)	60.00/(2.362)	8.30/(.327)	6.58/(.259)	70.90/(2.791)		2		
4395-1421	10	51.41/(2.024)	40.00/(1.575)	3.50/(.137)	2.60/(.102)	50.90/(2.004)	2.36/(.093)	2		

NOTES:

- MATERIALS:
HOUSING: 30% GLASS FILLED NYLON 4/6, UL94V-0, COLOR: BLACK.
TERMINAL: ALLOY 151
PLATING: *TIN OVER NICKEL
OR SELECT GOLD AND SELECT TIN OVER NICKEL
OR SELECT SILVER AND SELECT TIN OVER NICKEL (SEE CHART)
* THE PRIMARY SHIPPING CARTON WILL BE LABELED 'COMPLAINT TO ROHS DIRECTIVE 2002/95/EC AND ELV ANNEX II OF DIRECTIVE 2000/53/EC'. CARTONS WITHOUT THIS LABEL MAY CONTAIN PRODUCT WITH TIN-LEAD.
- PRODUCT SPEC: PS-42815-0001
- PARTS ARE NOT TO BE MATED OR UNMATED WHILE CIRCUITS ARE LIVE.
- PART MATES WITH MOLEX RECEPTACLE 43914.
- WHEN USING OVERALL TIN PLATED TERMINALS:
FOR APPLICATIONS INVOLVING VIBRATION AND/OR THERMAL CYCLING, MOLEX STRONGLY RECOMMENDS THE USE OF NYE LUBRICANT (NYGEL 760G) ON THE MATING SURFACES OF THE TERMINAL.
- POLARIZING SLOTS TO BE LOCATED BETWEEN CIRCUITS ON EITHER END OF HOUSING OF THE CIRCUIT 1 ROW, AS SHOWN.
EXCEPTION: THE 6 CIRCUIT HOUSING WILL HAVE A SINGLE SLOT ON THE CIRCUIT 1 END ONLY.
- PARTS CONFORMS TO CLASS 'B' REQUIREMENTS OF COSMETIC SPEC-PS-45499-002.
- REFER AS-42815-001 FOR TIN PLATED TERMINALS RECOMMENDED LUBRICATION PROCEDURE.



NEW SILVER PLATING DATE: 08/20/15 ECN: 002015-2752 DRAWN BY: DRW:BR02 CHECKED BY: CHKD: APPROX:KPRASAD 2015/02/09	QUALITY SYMBOLS ∇=0 ∇=0 ∇=0	GENERAL TOLERANCES (UNLESS SPECIFIED): 4 PLACES ±.005 3 PLACES ±.008 2 PLACES ±0.2 1 PLACE ±.005 0 PLACE ±.005	DIMENSION STYLE MM/IN	SCALE 2:1	DESIGN UNITS METRIC	THIRD ANGLE PROJECTION
	DRAFT WHERE APPLICABLE MUST REMAIN WITHIN DIMENSIONS	DRAWN BY: COMERC I DATE: 8/21/17	CHECKED BY: BR02 DATE: 2014/02/13	APPROVED BY: KPRASAD DATE: 2015/02/09	MATERIAL NO. SEE CHART	DOCUMENT NO. SD-43915-002

VERTICAL HEADER DUAL ROW, 6-14 CIRCUIT MINI-FIT SR.

molex

THIS DRAWING CONTAINS INFORMATION THAT IS PROPRIETARY TO MOLEX INCORPORATED AND SHOULD NOT BE USED WITHOUT WRITTEN PERMISSION

MATERIAL NUMBER	CIRCUITS	DIM,'A'	DIM,'B'	DIM,'C'	DIM,'D'	DIM,'E'	PCB THICKNESS	QUANTITY OF POLARIZING SLOTS	TERMINAL FLATING	STATUS
43915-1101	6	31.41/(1.237)	20.00/(.787)	3.50/(.137)	1.80/(.071)	30.90/(1.217)		1	OVERALL TIN	PLANNED FOR OBsolescence
43915-1102	6	41.41/(1.630)	30.00/(1.181)	3.50/(.137)	1.80/(.071)	40.90/(1.610)	157/(.062)	2		
43915-1103	10	51.41/(2.024)	40.00/(1.575)	3.50/(.137)	1.80/(.071)	50.90/(2.004)		2		
43915-1104	12	61.41/(2.418)	50.00/(1.969)	3.50/(.137)	1.80/(.071)	60.90/(2.398)		2		
43915-1105	14	71.41/(2.811)	60.00/(2.362)	3.50/(.137)	1.80/(.071)	70.90/(2.791)		2		
43915-1106	6	31.41/(1.237)	20.00/(.787)	5.10/(.201)	2.60/(.102)	30.90/(1.217)		1		
43915-1107	6	41.41/(1.630)	30.00/(1.181)	5.10/(.201)	2.60/(.102)	40.90/(1.610)		2		
43915-1108	10	51.41/(2.024)	40.00/(1.575)	5.10/(.201)	2.60/(.102)	50.90/(2.004)	2.36/(.093)	2		
43915-1109	12	61.41/(2.418)	50.00/(1.969)	5.10/(.201)	2.60/(.102)	60.90/(2.398)		2		
43915-1110	14	71.41/(2.811)	60.00/(2.362)	5.10/(.201)	2.60/(.102)	70.90/(2.791)		2		
43915-1111	6	31.41/(1.237)	20.00/(.787)	5.10/(.201)	3.40/(.134)	30.90/(1.217)		1		
43915-1112	6	41.41/(1.630)	30.00/(1.181)	5.10/(.201)	3.40/(.134)	40.90/(1.610)		2		
43915-1113	10	51.41/(2.024)	40.00/(1.575)	5.10/(.201)	3.40/(.134)	50.90/(2.004)	3.18/(.125)	2		
43915-1114	12	61.41/(2.418)	50.00/(1.969)	5.10/(.201)	3.40/(.134)	60.90/(2.398)		2		
43915-1115	14	71.41/(2.811)	60.00/(2.362)	5.10/(.201)	3.40/(.134)	70.90/(2.791)		2		
43915-1116	6	31.41/(1.237)	20.00/(.787)	8.30/(.327)	6.58/(.259)	30.90/(1.217)		1		
43915-1117	6	41.41/(1.630)	30.00/(1.181)	8.30/(.327)	6.58/(.259)	40.90/(1.610)		2		
43915-1118	10	51.41/(2.024)	40.00/(1.575)	8.30/(.327)	6.58/(.259)	50.90/(2.004)	6.35/(.250)	2		
43915-1119	12	61.41/(2.418)	50.00/(1.969)	8.30/(.327)	6.58/(.259)	60.90/(2.398)		2		
43915-1120	14	71.41/(2.811)	60.00/(2.362)	8.30/(.327)	6.58/(.259)	70.90/(2.791)		2		
43915-1121	10	51.41/(2.024)	40.00/(1.575)	3.50/(.137)	2.60/(.102)	50.90/(2.004)	2.36/(.093)	2		
43915-1905	14	71.41/(2.811)	60.00/(2.362)	3.50/(.137)	1.80/(.071)	70.90/(2.791)	157/(.062)	2		

SEE SHEET 1 ELEC NO: UCP 2015-2752 DRAWN BY: [Signature] CHKD: [Signature] APPR: KPRASAD 2015/02/09	QUALITY SYMBOLS ▽=0 ▽=0 ▽=0	GENERAL TOLERANCES (UNLESS SPECIFIED) mm INCH		DIMENSION STYLE MM/IN	SCALE 1:2	DESIGN UNITS METRIC	THIRD ANGLE PROJECTION		
		4 PLACES ±.008 3 PLACES ±.008 2 PLACES ±0.2 1 PLACE ±.008 0 PLACE ±.008	4 PLACES ±.008 3 PLACES ±.008 2 PLACES ±.008 1 PLACE ±.008 0 PLACE ±.008	DRAWN BY DATE COMERC I 8/21/197	CHECKED BY DATE BRO2 2014/02/13	APPROVED BY DATE KPRASAD 2015/02/09	TITLE VERTICAL HEADER DUAL ROW 6-14 CIRCUIT MINI-FIT SR.		MATERIAL NO. SEE CHART
DRAFT WHERE APPLICABLE MUST REMAIN WITHIN DIMENSIONS		ANGULAR ±1/2°		THIS DRAWING CONTAINS INFORMATION THAT IS PROPRIETARY TO MOLEX INCORPORATED AND SHOULD NOT BE USED WITHOUT WRITTEN PERMISSION		MOLEX			