

NOTES:

1. PRESS FIT LEGS 0.120" LONG-
0.062 [1.57] MINIMUM PCB THICKNESS FOR SINGLE SIDED USE.
0.118 [3.00] MINIMUM PCB THICKNESS FOR BELLY TO BELLY USE.

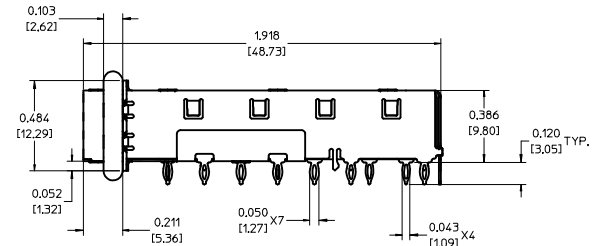
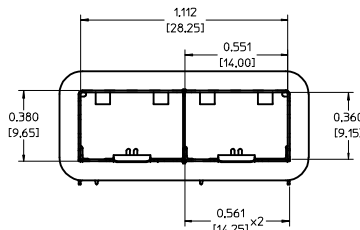
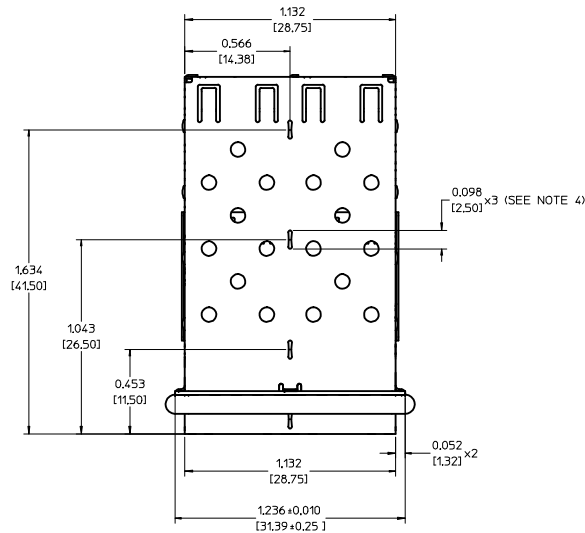
2. MATERIAL: COPPER ALLOY
PLATING: NONE

NOTE: A NICKEL PLATED VERSION OF THIS ASSEMBLY IS AVAILABLE.
REFER TO DOCUMENT SD-74722-004

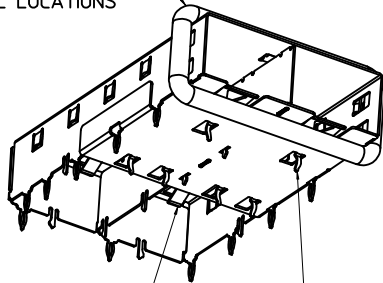
3. REFERENCE DOCUMENTS:
PRODUCT SPECIFICATION: PS-74728-000
COSMETIC SPECIFICATIONS: WI-HP-2774 AND WI-HPA-7-0093
TEST SUMMARY: TS-74722-0001.

4. MATES WITH SERIES 74727, LIGHT PIPE COVER ASSEMBLY.

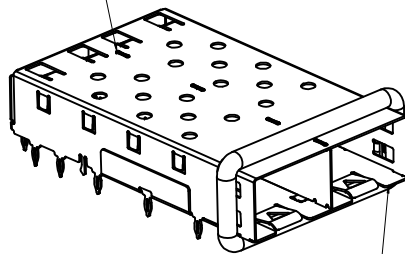
5. THIS PART MEETS THE RESTRICTION OF HAZARDOUS SUBSTANCES IN
ELECTRICAL AND ELECTRONIC EQUIPMENT (ROHS) DIRECTIVE (2002/95/EC).



360° ELASTOMER EMI GASKET
COMPLIES WITH (SFP) MSA
BOARD AND BEZEL LOCATIONS



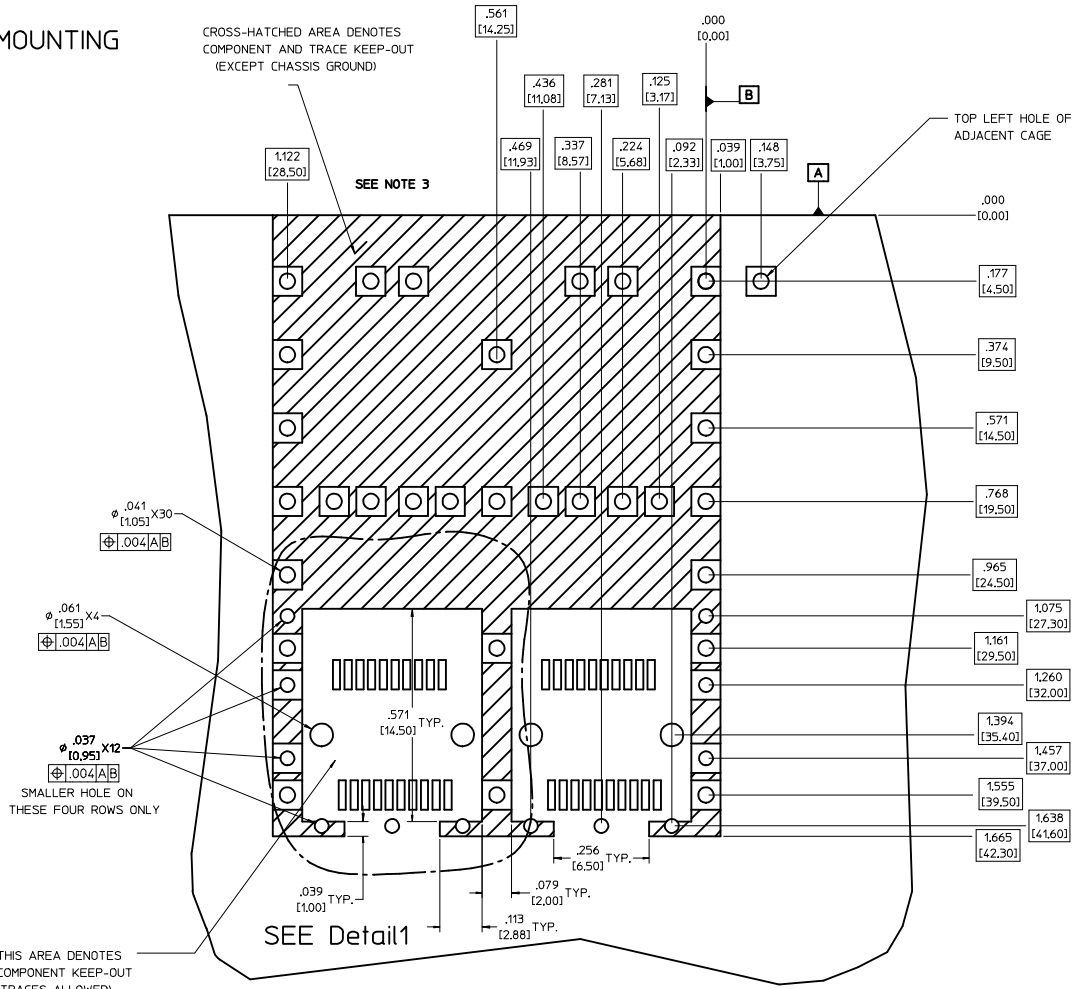
INNER WALL TABS ARE COINED
OVER BASE AND COVER FOR RIGIDITY



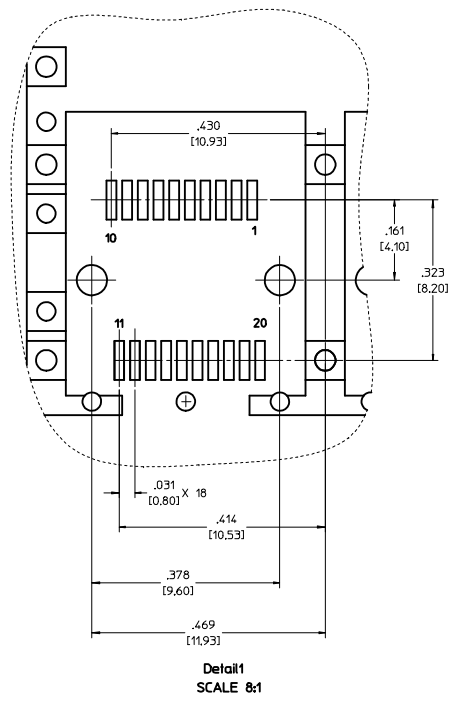
DIMENSIONS OF EACH INNER CAGE DESIGNED
TO FUNCTION WITH SMALL FORM-FACTOR
PLUGGABLE (SFP) TRANSCEIVER

ENTER DESCRIPTION EC NO: USY2006-0073 DRWKS:IMONSO 2006/01/17 CHKD:BRUSSELL 2006/01/20 APPR:BRUSSELL 2006/01/25	QUALITY SYMBOLS ▽=0 ▽=0	GENERAL TOLERANCES (UNLESS SPECIFIED)		DIMENSION STYLE IN/MM	SCALE 3:1	DESIGN UNITS METRIC	THIRD ANGLE PROJECTION	
		4 PLACES ± --- ± ---	mm INCH	DRAWN BY KS IMONSO	DATE 2003/09/25	TITLE 1X2 SFP GANGED CAGE ASSEMBLY, PRESS FIT		
		3 PLACES ± --- ± .005		CHECKED BY BRUSSELL	DATE 2003/10/27	MOLEX INCORPORATED		
		2 PLACES ± 0.13 ± .010 1 PLACE ± 0.25 ± --- ANGULAR ± 1°		APPROVED BY BRUSSELL	DATE 2003/10/27	MATERIAL NO. 747220001	DOCUMENT NO. SD-74722-001	SHEET NO. 1 OF 5
DRAFT WHERE APPLICABLE MUST REMAIN WITHIN DIMENSIONS		THIS DRAWING CONTAINS INFORMATION THAT IS PROPRIETARY TO MOLEX INCORPORATED AND SHOULD NOT BE USED WITHOUT WRITTEN PERMISSION						

PCB LAYOUT FOR BELLY TO BELLY MOUNTING



HOST CONNECTOR DETAIL



- NOTES:**
- PADS AND VIAS GO TO CHASSIS GROUND. (34 PLACES).
RECOMMENDED PADS TO BE 2mm SQUARE.
 - PLATING OPTIONAL FOR THROUGH HOLES (8 PLACES)
 - RECOMMENDED PLATING INCLUDES HASL, IMMERSION (GOLD, SILVER, OR TIN), AND OSP.
 - HOLE PATTERN REPEATS FOR EACH PORT.
SPACING BETWEEN PORTS IS 0.561 [14.25]
 - CONNECTOR PAD LAYOUT PER SFP MSA. WILL ACCOMMODATE MOLEX CONNECTOR SERIES 74441 OR EQUIVALENT.

THIS AREA DENOTES
COMPONENT KEEP-OUT
(TRACES ALLOWED)

CROSS-HATCHED AREA DENOTES
COMPONENT AND TRACE KEEP-OUT
(EXCEPT CHASSIS GROUND)

SEE NOTE 3

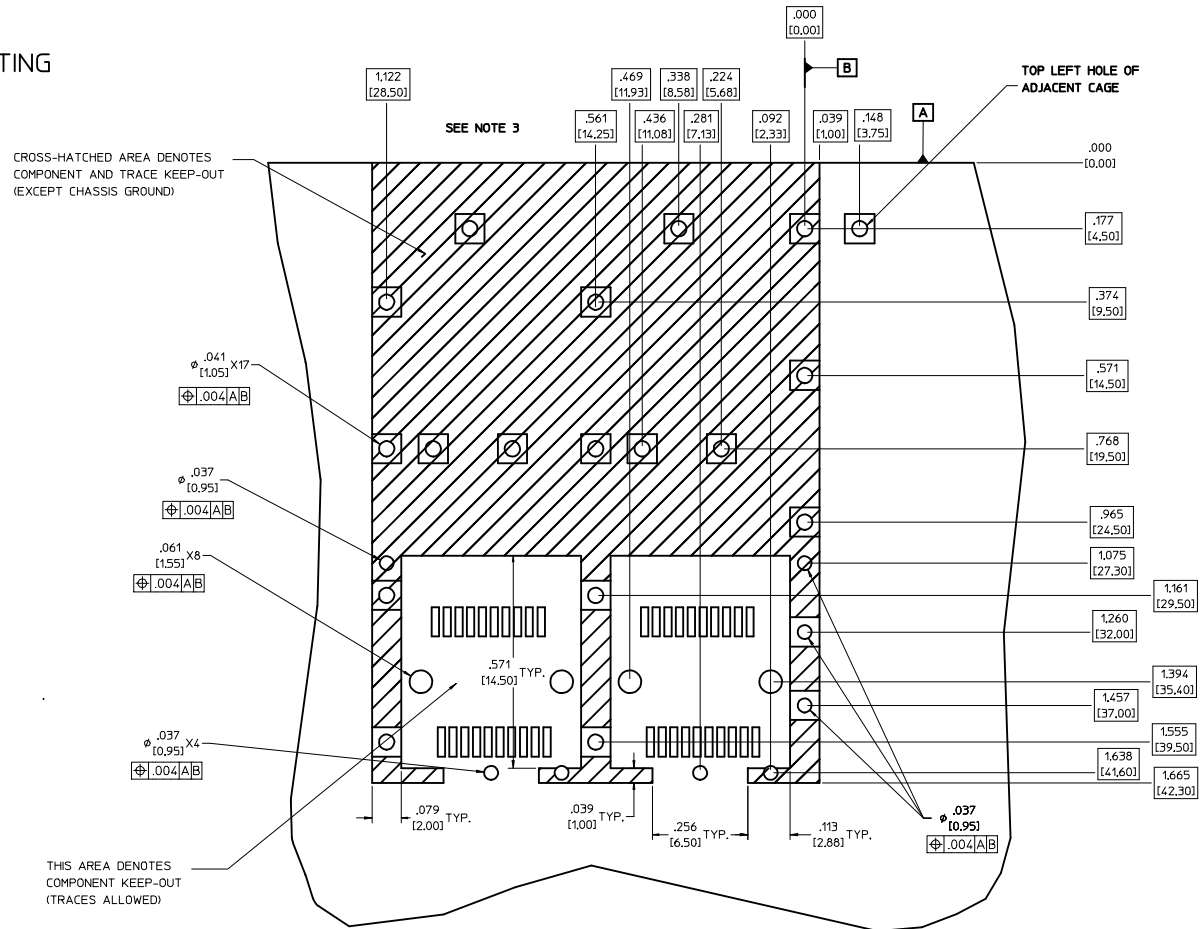
SEE Detail1

TOP LEFT HOLE OF
ADJACENT CAGE

Detail1
SCALE 8:1

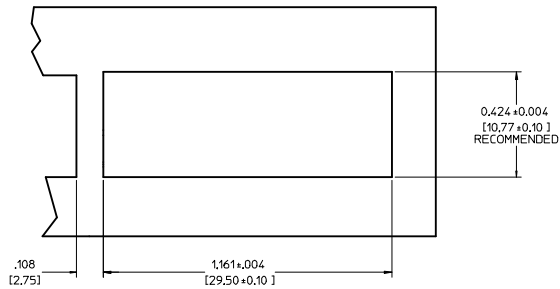
ENTER DESCRIPTION IEC NO. USY2006-0073 DRAWN BY DRANKS IMONSON 2006/01/17 CHYK BRUSSELL 2006/01/20 APPR. BRUSSELL 2006/01/25 REV DESCRIPTION	QUALITY SYMBOLS ▽=0 ▽=0		GENERAL TOLERANCES (UNLESS SPECIFIED)		DIMENSION STYLE IN/MM		SCALE 6:1		DESIGN UNITS METRIC		THIRD ANGLE PROJECTION	
	4 PLACES ± --- ± --- 3 PLACES ± --- ± .005 2 PLACES ± 0.13 ± .010 1 PLACE ± 0.25 ± ---		mm INCH ANGULAR ± 1 °		DRAWN BY DATE KS IMONSON 2003/09/25		CHECKED BY DATE BRUSSELL 2003/10/27		TITLE 1X2 SFP GANGED CAGE ASSEMBLY, PRESS FIT			
	DRAFT WHERE APPLICABLE MUST REMAIN WITHIN DIMENSIONS		MATERIAL NO. 747220001		APPROVED BY DATE BRUSSELL 2003/10/27		MOLEX INCORPORATED		DOCUMENT NO. SD-74722-001		SHEET NO. 2 OF 5	
	THIS DRAWING CONTAINS INFORMATION THAT IS PROPRIETARY TO MOLEX INCORPORATED AND SHOULD NOT BE USED WITHOUT WRITTEN PERMISSION											

PCB LAYOUT FOR SINGLE SIDE MOUNTING

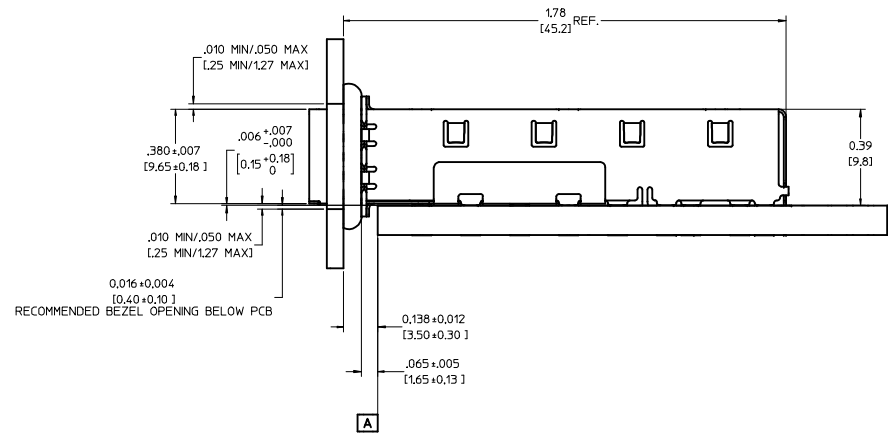


- NOTES:**
- PADS AND VIAS GO TO CHASSIS GROUND. (19 PLACES).
RECOMMENDED PADS TO BE 2mm SQUARE.
 - PLATING OPTIONAL FOR THROUGH HOLES (6 PLACES)
 - RECOMMENDED PLATING INCLUDES HASL, IMMERSION (GOLD, SILVER, OR TIN), AND OSP.
 - HOLE PATTERN REPEATS FOR EACH PORT.
SPACING BETWEEN PORTS IS 0.561 [14.25]
 - CONNECTOR PAD LAYOUT PER SFP MSA. WILL ACCOMMODATE MOLEX CONNECTOR SERIES 74441 OR EQUIVALENT.

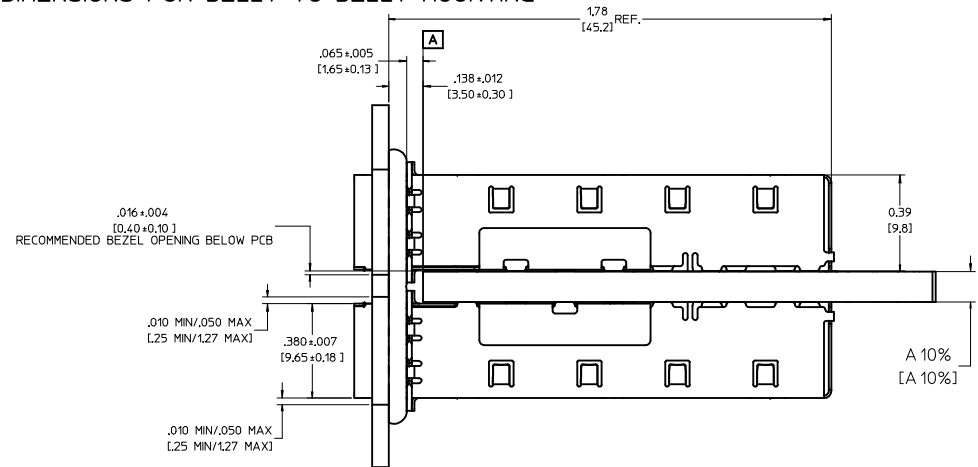
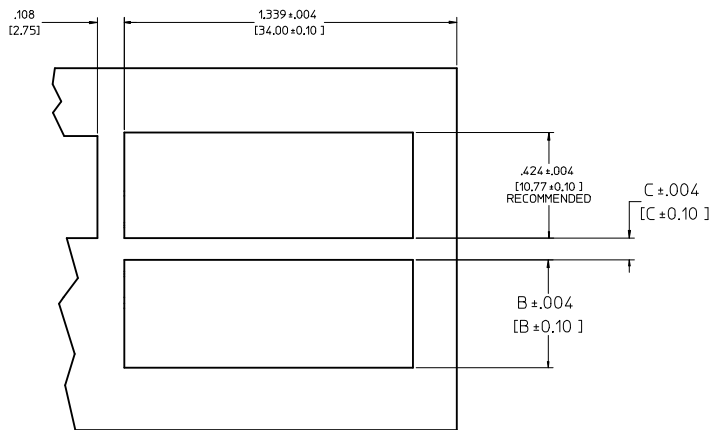
ENTER DESCRIPTION EC NO: USY2006-0073 DRAWN BY: KSI MONSON 2006/01/17 CHECKED BY: CHYD BRUSSELL 2006/01/20 APPROVED BY: APPR: BRUSSELL 2006/01/25 REV:	QUALITY SYMBOLS ▽=0 ▽=0	GENERAL TOLERANCES (UNLESS SPECIFIED):		DIMENSION STYLE IN/MM	SCALE 6:1	DESIGN UNITS METRIC	<input checked="" type="checkbox"/> THIRD ANGLE PROJECTION
		4 PLACES ±.005 ±.005 3 PLACES ±.005 ±.005 2 PLACES ±0.13 ±.010 1 PLACE ±0.25 ±.010 ANGULAR ± 1°	mm INCH	DRAWN BY: KSI MONSON DATE: 2003/09/25 CHECKED BY: BRUSSELL DATE: 2003/10/27 APPROVED BY: BRUSSELL DATE: 2003/10/27	TITLE 1X2 SFP GANGED CAGE ASSEMBLY, PRESS FIT	MOLEX INCORPORATED	
DRAFT WHERE APPLICABLE MUST REMAIN WITHIN DIMENSIONS		MATERIAL NO. 747220001	DOCUMENT NO. SD-74722-001	SHEET NO. 3 OF 5			
THIS DRAWING CONTAINS INFORMATION THAT IS PROPRIETARY TO MOLEX INCORPORATED AND SHOULD NOT BE USED WITHOUT WRITTEN PERMISSION							



BEZEL AND BOARD POSITION DIMENSIONS FOR SINGLE SIDE MOUNTING



BEZEL AND BOARD POSITION DIMENSIONS FOR BELLY TO BELLY MOUNTING



NOTE: FOR A GIVEN BOARD THICKNESS (A), DIMENSIONS (B) AND (C) ARE DIRECTLY AFFECTED.

USE RECOMMENDED DIMENSIONS AND TOLERANCES TO AID IN DEVELOPING BEZEL OPENING.

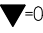
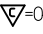

FOR EXAMPLE USING A BOARD THICKNESS OF .125" THE RECOMMENDED VALUES WOULD BE:

- A= .125/3.18 ±10%
- B= .434/11.03 ±.004
- C= .088/2.23 ±.004

ENTER DESCRIPTION IEC NO: USY2006-0073 DRAWN BY: KSI MONSON 2006/01/17 CHYKORUSSELL 2006/01/20 APPR: BRUSSELL 2006/01/25	QUALITY SYMBOLS ▽=0 ▽=0	GENERAL TOLERANCES (UNLESS SPECIFIED)		DIMENSION STYLE IN/MM	SCALE 4:1	DESIGN UNITS METRIC	THIRD ANGLE PROJECTION
		4 PLACES ± --- ± --- 3 PLACES ± --- ± .005 2 PLACES ± 0.13 ± .010 1 PLACE ± 0.25 ± ---	mm INCH	DRAWN BY: KSI MONSON DATE: 2003/09/25 CHECKED BY: BRUSSELL DATE: 2003/10/27 APPROVED BY: BRUSSELL DATE: 2003/10/27	TITLE: 1X2 SFP GANGED CAGE ASSEMBLY, PRESS FIT		
		DRAFT WHERE APPLICABLE MUST REMAIN WITHIN DIMENSIONS		MATERIAL NO: 747220001 DOCUMENT NO: SD-74722-001	MOLEX INCORPORATED		

20 19 18 17 16 15 14 13 12 11 10 9 8 7 6 5 4 3 2 1

DATE	REV	CHANGES	COMMENTS
10/27/2003	A	INITIAL RELEASE	N/A
10/06/2005	B	ADDED PCB AND BEZEL LAYOUT	N/A

ENTER DESCRIPTION IEC NO: USY2006-0073 DRAWN BY: DRANKS IMONSON 2006/01/17 CHECKED BY: CHYD BRUSSELL 2006/01/20 APPR: BRUSSELL 2006/01/25	QUALITY SYMBOLS  = 0  = 0	GENERAL TOLERANCES (UNLESS SPECIFIED)		DIMENSION STYLE IN/MM	SCALE 1:1	DESIGN UNITS METRIC	 THIRD ANGLE PROJECTION
		4 PLACES ± --- ± --- 3 PLACES ± --- ± .005 2 PLACES ± 0.13 ± .010 1 PLACE ± 0.25 ± --- ANGULAR ± 1°	DRAWN BY: DATE KS IMONSON 2003/09/25 CHECKED BY: DATE BRUSSELL 2003/10/27 APPROVED BY: DATE BRUSSELL 2003/10/27	TITLE 1X2 SFP GANGED CAGE ASSEMBLY, PRESS FIT			
		DRAFT WHERE APPLICABLE MUST REMAIN WITHIN DIMENSIONS		MATERIAL NO. 747220001	DOCUMENT NO. SD-74722-001	MOLEX INCORPORATED	SHEET NO. 5 OF 5
		THIS DRAWING CONTAINS INFORMATION THAT IS PROPRIETARY TO MOLEX INCORPORATED AND SHOULD NOT BE USED WITHOUT WRITTEN PERMISSION					

19 18 17 16 15 14 13 12 11 10 9 8 7 6 5 4 3 2 1