

NOTES:

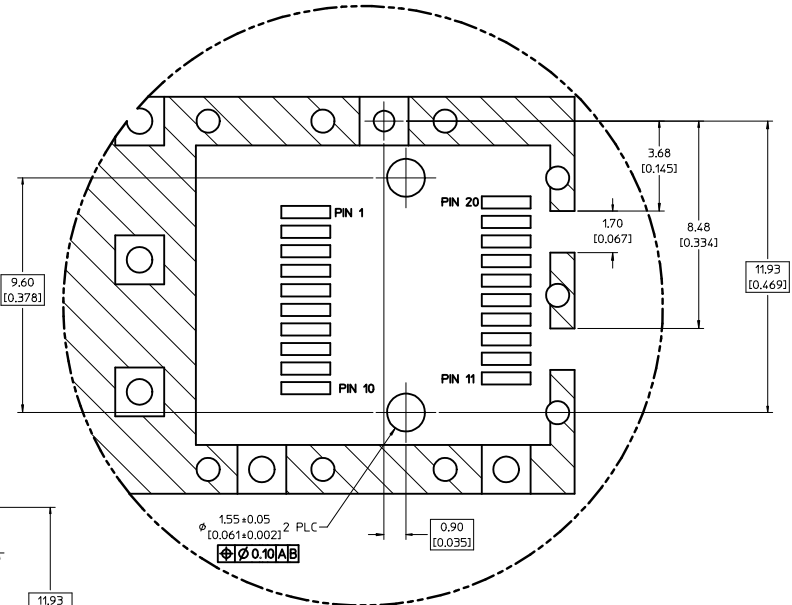
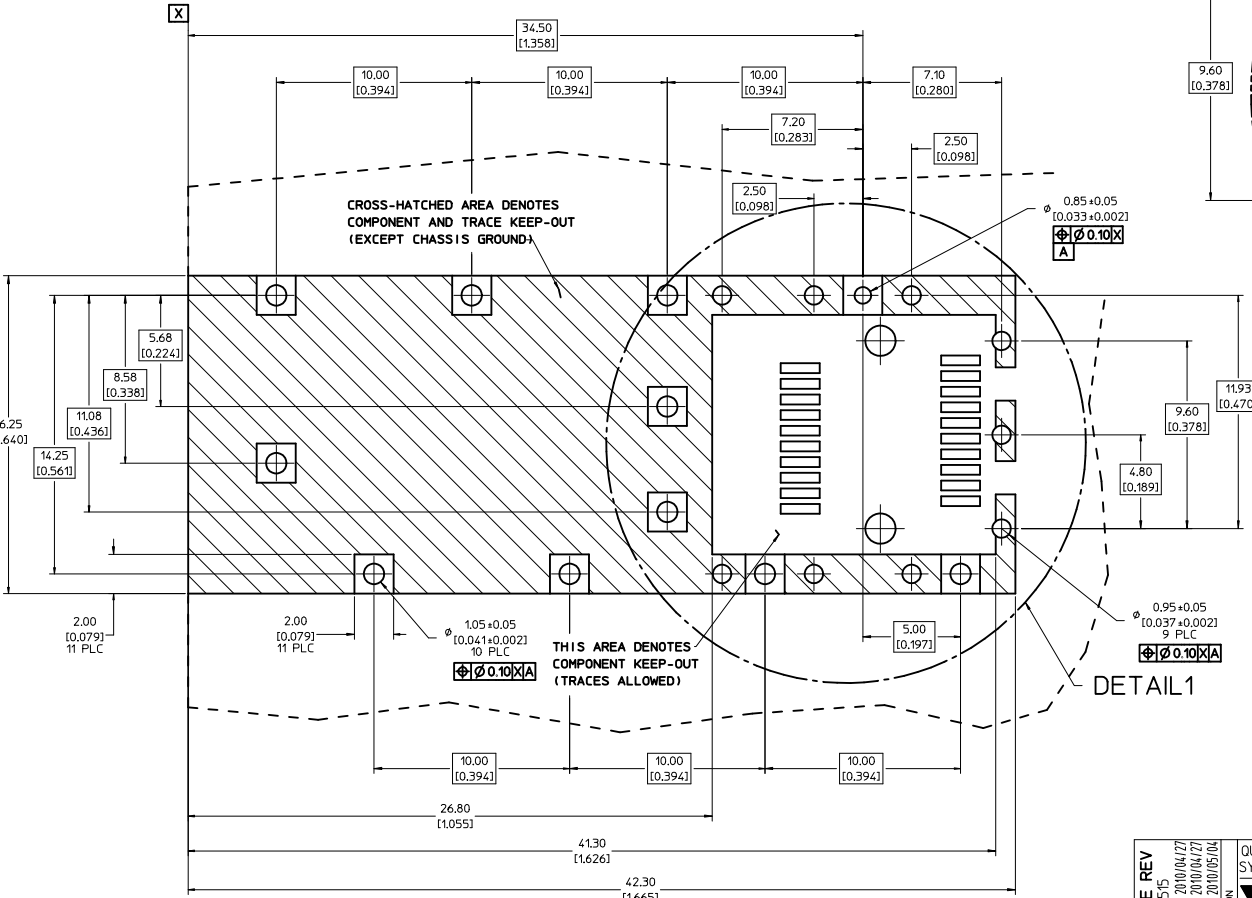
- PRESS FIT LEGS, 0.120 INCHES LONG.
1.57 [0.062] MINIMUM PCB THICKNESS.
- THIS CAGE IS FOR SINGLE SIDED USE ONLY.
- CAN BE USED WITH THE FOLLOWING LIGHT PIPE PART NUMBERS:
747260001 - LIGHT PIPE FROM BACK TO TOP
(REFER TO DOCUMENT SD-74726-001)
747260002 - LIGHT PIPE FROM SIDE TO TOP
(REFER TO DOCUMENT SD-74726-002)
- MATERIAL: COPPER ALLOY
PLATING: PRE-PLATED WITH NICKEL
- THIS PART MEETS THE RESTRICTION OF HAZARDOUS SUBSTANCES IN ELECTRICAL AND ELECTRONIC EQUIPMENT (ROHS) DIRECTIVE (2002/95/EC).

REV DIMS-CAGE REV EC NO: USY2010-0515 DRAWN BY: CHYOKI JANOTA APPROV: K JANOTA 2010/04/27 2010/05/04	QUALITY SYMBOLS ▽=0 ▽=0	GENERAL TOLERANCES (UNLESS SPECIFIED): <table border="1"> <thead> <tr> <th></th> <th>mm</th> <th>INCH</th> </tr> </thead> <tbody> <tr> <td>4 PLACES</td> <td>±0.05</td> <td>±0.002</td> </tr> <tr> <td>3 PLACES</td> <td>±0.025</td> <td>±0.001</td> </tr> <tr> <td>2 PLACES</td> <td>±0.13</td> <td>±0.01</td> </tr> <tr> <td>1 PLACE</td> <td>±0.25</td> <td>±0.01</td> </tr> </tbody> </table>		mm	INCH	4 PLACES	±0.05	±0.002	3 PLACES	±0.025	±0.001	2 PLACES	±0.13	±0.01	1 PLACE	±0.25	±0.01	DIMENSION STYLE MM/IN	SCALE 5:1	DESIGN UNITS METRIC	THIRD ANGLE PROJECTION
		mm	INCH																		
4 PLACES	±0.05	±0.002																			
3 PLACES	±0.025	±0.001																			
2 PLACES	±0.13	±0.01																			
1 PLACE	±0.25	±0.01																			
DESCRIPTION SFP ONE PIECE CAGE PRESS-FIT (0.120 LEGS) W/ MODIFIED LATCH TANG	DRAWN BY JRESENDE	DATE 2009/09/28	TITLE SFP ONE PIECE CAGE PRESS-FIT (0.120 LEGS) W/ MODIFIED LATCH TANG	MATERIAL NO. 747370033	DOCUMENT NO. SD-74737-0033	SHEET NO. 1 OF 3															

DRAFT WHERE APPLICABLE MUST REMAIN WITHIN DIMENSIONS

THIS DRAWING CONTAINS INFORMATION THAT IS PROPRIETARY TO MOLEX INCORPORATED AND SHOULD NOT BE USED WITHOUT WRITTEN PERMISSION

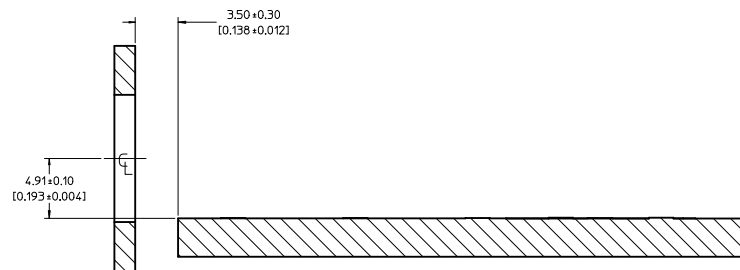
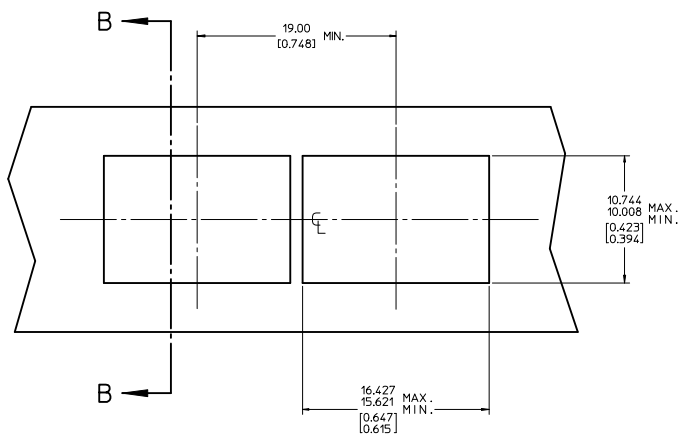
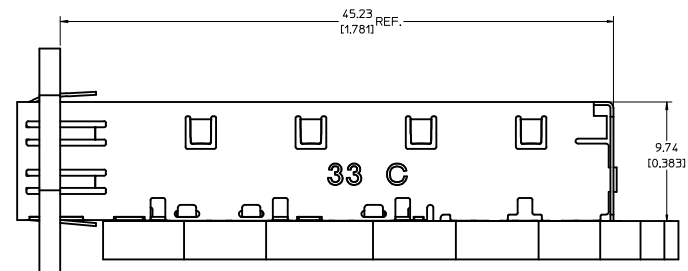
1. PADS AND VIAS ARE CHASSIS GROUND.
2. HOLE LAYOUT SHOWN IS FOR SINGLE SIDED MOUNTING ONLY.
3. CONNECTOR PAD LAYOUT PER SFP MSA, WILL ACCOMMODATE MOLEX CONNECTOR SERIES 74441 OR EQUIVALENT.



DETAIL 1

REV DIMS-CAGE REV IEC NO: USY2010-0515 DRAWN/SECRET 2010/04/27 CHKD/K.LANITA 2010/04/27 APPR/K.LANITA 2010/05/04	QUALITY SYMBOLS	GENERAL TOLERANCES (UNLESS SPECIFIED)	DIMENSION STYLE	SCALE	DESIGN UNITS	THIRD ANGLE PROJECTION	
	$\nabla=0$ $\nabla=0$	mm INCH 4 PLACES ± --- ± --- 3 PLACES ± --- ± 0.005 2 PLACES ± 0.13 ± 0.01 1 PLACE ± 0.25 ± --- ANGULAR ± 1 °	MM/IN	8:1	METRIC		
	DRAWN BY: JRESENDE CHECKED BY: JRESENDE APPROVED BY: JRESENDE	DATE: 2009/09/28 DATE: 2009/09/28 DATE: 2009/09/28	MATERIAL NO: 747370033 SIZE: D	TITLE: SFP ONE PIECE CAGE PRESS-FIT (0.120 LEGS) W/ MODIFIED LATCH TANG MOLEX INCORPORATED	DOCUMENT NO: SD-74737-0033	SHEET NO: 2 OF 3	
	DRAFT WHERE APPLICABLE MUST REMAIN WITHIN DIMENSIONS						THIS DRAWING CONTAINS INFORMATION THAT IS PROPRIETARY TO MOLEX INCORPORATED AND SHOULD NOT BE USED WITHOUT WRITTEN PERMISSION

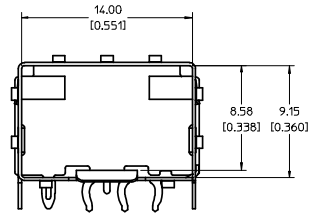
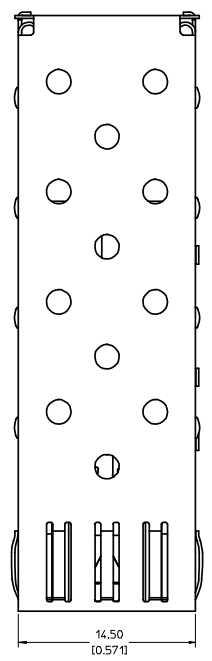
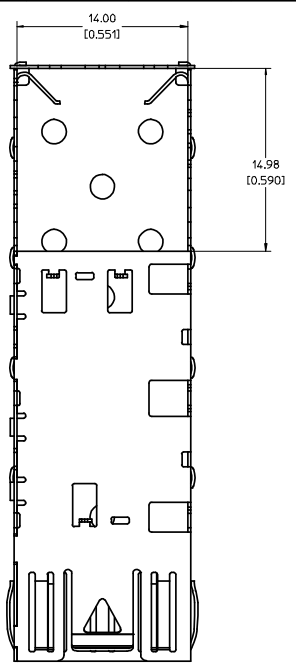
20 19 18 17 16 15 14 13 12 11 10 9 8 7 6 5 4 3 2 1



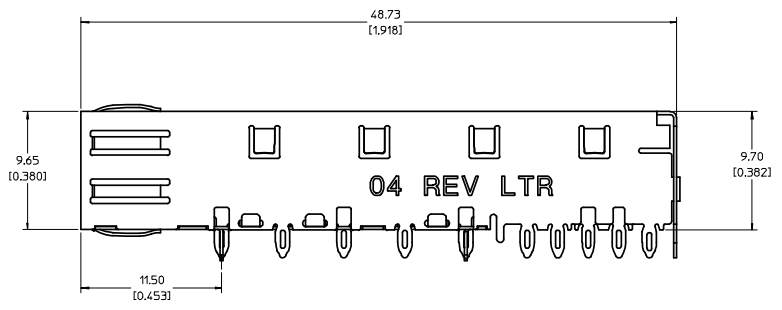
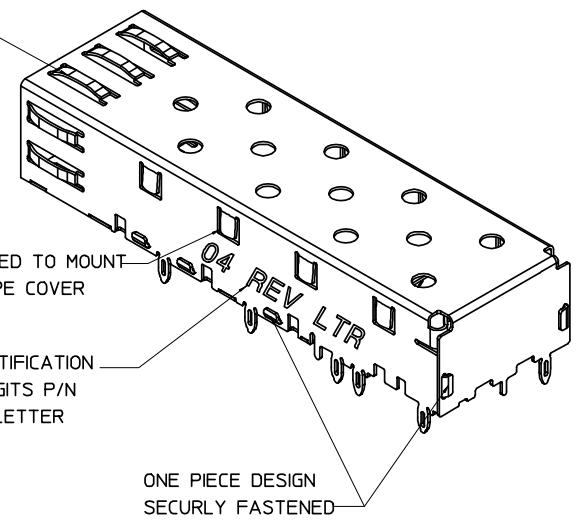
SECTION B-B

REV DIMS-CAGE REV IEC NO: USY2010-0515 DRAWN/SECRET 2010/04/27 CHKD/K.JANITA 2010/04/27 APPR/K.JANITA 2010/05/04 REV DESCRIPTION	QUALITY SYMBOLS	GENERAL TOLERANCES (UNLESS SPECIFIED)	DIMENSION STYLE	SCALE	DESIGN UNITS	THIRD ANGLE PROJECTION	
	▽=0 ▽=0	mm INCH 4 PLACES ± --- ± --- 3 PLACES ± --- ± 0.005 2 PLACES ± 0.13 ± 0.01 1 PLACE ± 0.25 ± --- ANGULAR ± 1°	MM/IN	5:1	METRIC	DRAWN BY DATE JRESENDE 2009/09/28 CHECKED BY DATE JRESENDE 2009/09/28 APPROVED BY DATE JRESENDE 2009/09/28	
	DRAFT WHERE APPLICABLE MUST REMAIN WITHIN DIMENSIONS	MATERIAL NO. 747370033	DOCUMENT NO. SD-74737-0033	TITLE SFP ONE PIECE CAGE PRESS-FIT (0.120 LEGS) W/ MODIFIED LATCH TANG		MOLEX INCORPORATED	SHEET NO. 3 OF 3
	THIS DRAWING CONTAINS INFORMATION THAT IS PROPRIETARY TO MOLEX INCORPORATED AND SHOULD NOT BE USED WITHOUT WRITTEN PERMISSION						

19 18 17 16 15 14 13 12 11 10 9 8 7 6 5 4 3 2 1



SPRING FINGER GASKET WITH TWO POINTS OF CONTACT. COMPLIES WITH (SFP) MSA BOARD AND BEZEL LOCATIONS.



NOTES:

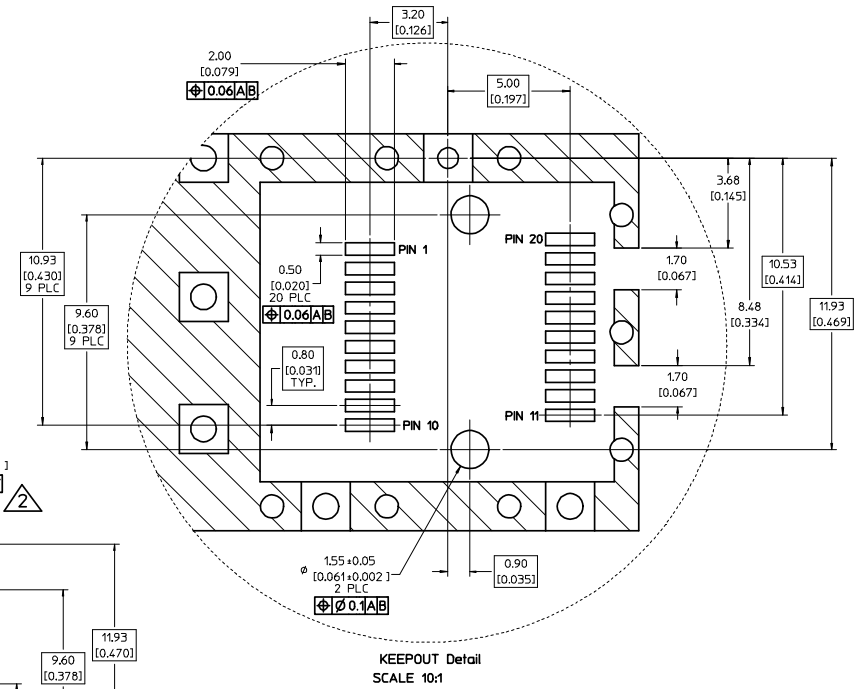
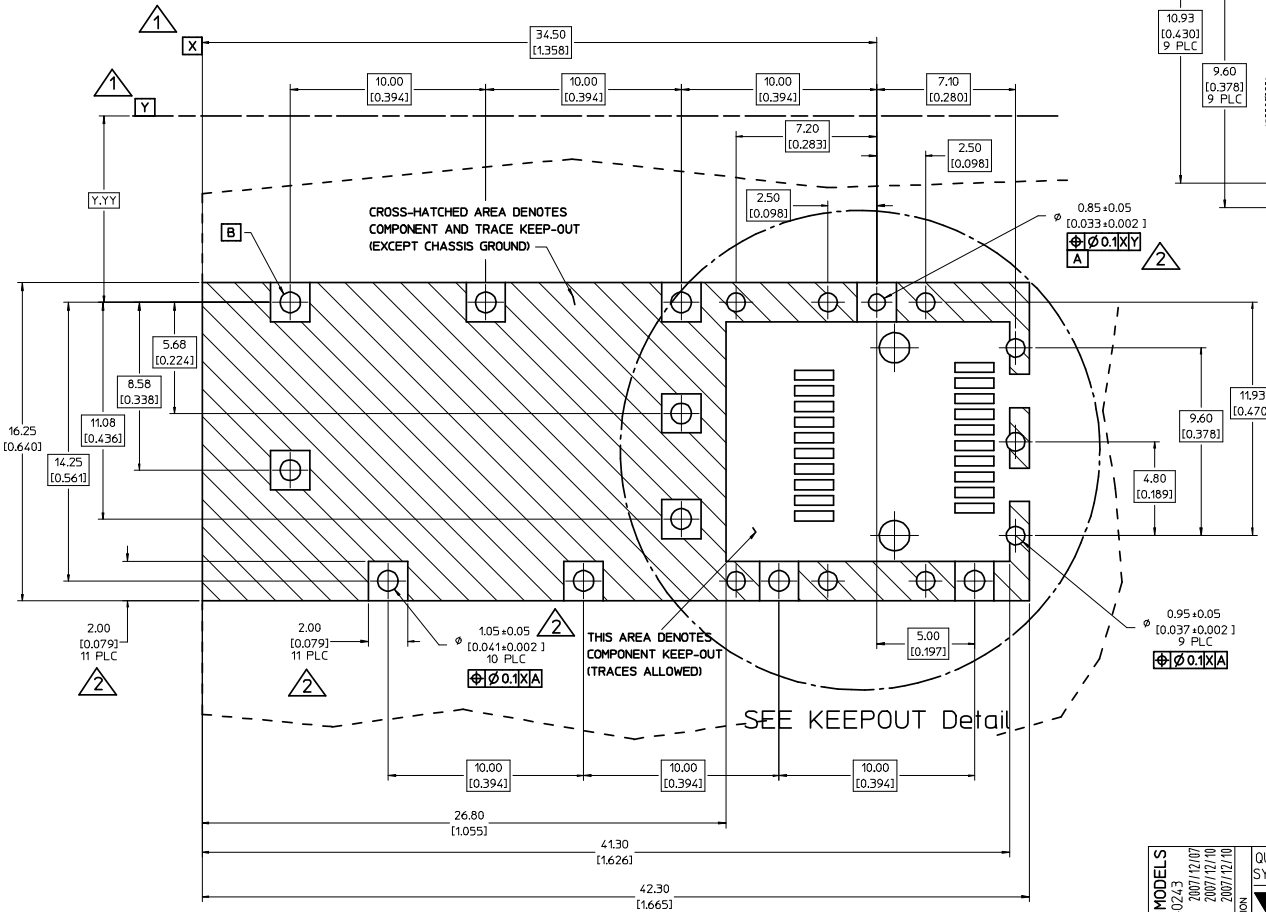
1. PRESS FIT LEGS, 0.090 INCHES LONG. 1.57 [0.062] MINIMUM PCB THICKNESS.
2. CAN BE USED WITH THE FOLLOWING LIGHT PIPE PART NUMBERS:

747260001 - LIGHT PIPE FROM BACK TO TOP (REFER TO DOCUMENT SD-74726-001)

747260002 - LIGHT PIPE FROM SIDE TO TOP (REFER TO DOCUMENT SD-74726-002)
3. MATERIAL: COPPER ALLOY
PLATING: PRE-PLATED WITH NICKEL
4. THIS PART MEETS THE RESTRICTION OF HAZARDOUS SUBSTANCES IN ELECTRICAL AND ELECTRONIC EQUIPMENT (ROHS) DIRECTIVE (2002/95/EC).

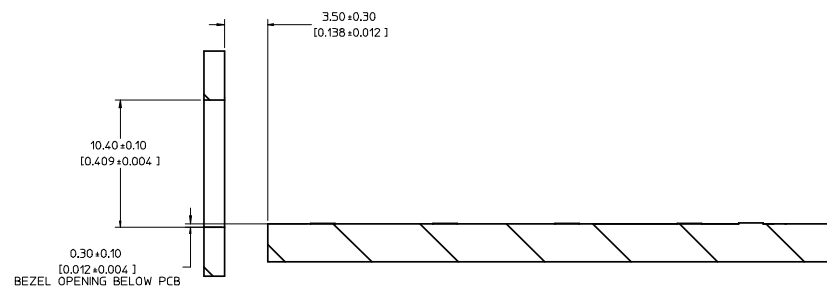
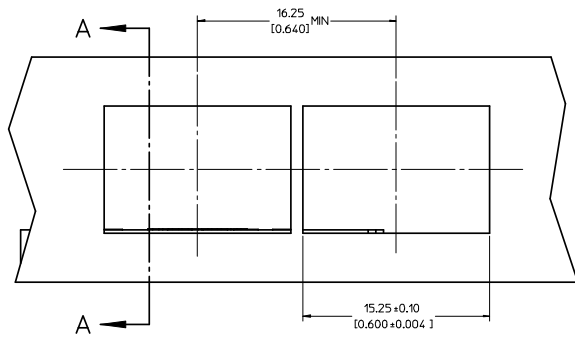
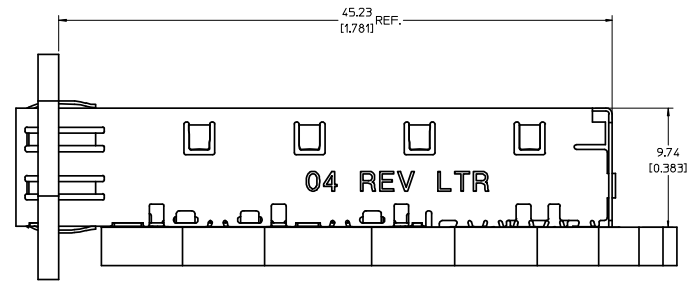
UPDATED 3D MODELS EC NO: USY2008-0243 DRAWN: CCOX CHKD: CCOX APPR: MONROE 2007/12/07 2007/12/10 2007/12/10	QUALITY SYMBOLS	GENERAL TOLERANCES (UNLESS SPECIFIED)	DIMENSION STYLE	SCALE	DESIGN UNITS	THIRD ANGLE PROJECTION																	
	$\nabla=0$ $\nabla=0$	<table border="1"> <tr><th></th><th>mm</th><th>INCH</th></tr> <tr><td>4 PLACES</td><td>±---</td><td>±---</td></tr> <tr><td>3 PLACES</td><td>±---</td><td>±.005</td></tr> <tr><td>2 PLACES</td><td>±0.13</td><td>±.01</td></tr> <tr><td>1 PLACE</td><td>±0.25</td><td>±---</td></tr> </table>		mm	INCH	4 PLACES	±---	±---	3 PLACES	±---	±.005	2 PLACES	±0.13	±.01	1 PLACE	±0.25	±---	MM/IN	5:1	METRIC			
		mm	INCH																				
	4 PLACES	±---	±---																				
3 PLACES	±---	±.005																					
2 PLACES	±0.13	±.01																					
1 PLACE	±0.25	±---																					
DESCRIPTION	DRAFT WHERE APPLICABLE MUST REMAIN WITHIN DIMENSIONS	<table border="1"> <tr><td>DRAWN BY</td><td>DATE</td><td>TITLE</td></tr> <tr><td>CCOX</td><td>2006/11/30</td><td>SFP ONE PIECE CAGE 0.090" PRESS FIT LEGS BLY-BLY ASSEMBLY</td></tr> <tr><td>CHECKED BY</td><td>DATE</td><td></td></tr> <tr><td>RAHMOOD</td><td>2006/11/30</td><td></td></tr> <tr><td>APPROVED BY</td><td>DATE</td><td></td></tr> <tr><td>RAHMOOD</td><td></td><td></td></tr> </table>	DRAWN BY	DATE	TITLE	CCOX	2006/11/30	SFP ONE PIECE CAGE 0.090" PRESS FIT LEGS BLY-BLY ASSEMBLY	CHECKED BY	DATE		RAHMOOD	2006/11/30		APPROVED BY	DATE		RAHMOOD			MATERIAL NO.	DOCUMENT NO.	SHEET NO.
DRAWN BY	DATE	TITLE																					
CCOX	2006/11/30	SFP ONE PIECE CAGE 0.090" PRESS FIT LEGS BLY-BLY ASSEMBLY																					
CHECKED BY	DATE																						
RAHMOOD	2006/11/30																						
APPROVED BY	DATE																						
RAHMOOD																							
REV			747370004	SD-74737-004	1 OF 4																		

- DATUM AND BASIC DIMENSIONS ESTABLISHED BY CUSTOMER.
- PADS AND VIAS ARE CHASSIS GROUND.
- HOLE LAYOUT SHOWN IS FOR SINGLE SIDED MOUNTING ONLY.
- CONNECTOR PAD LAYOUT PER SFP MSA, WILL ACCOMMODATE MOLEX CONNECTOR SERIES 74441 OR EQUIVALENT.



UPDATED 3D MODELS EC NO: USY2008-0243 DRAWN: CCOX CHKD: 2007/10/10 APPR: KMMORDE 2007/10/10	QUALITY SYMBOLS ▽=0 ▽=0	GENERAL TOLERANCES (UNLESS SPECIFIED)		DIMENSION STYLE MM/IN	SCALE 8:1	DESIGN UNITS METRIC	THIRD ANGLE PROJECTION		
		4 PLACES ± --- ± --- 3 PLACES ± --- ± .005 2 PLACES ± 0.13 ± .01 1 PLACE ± 0.25 ± --- ANGULAR ± 1 °	DRAWN BY CCOX DATE 2006/11/30	CHECKED BY RMAHMOOD DATE 2006/11/30	APPROVED BY RMAHMOOD DATE	TITLE SFP ONE PIECE CAGE 0.090" PRESS FIT LEGS BLY-BLY ASSEMBLY	MATERIAL NO. 747370004	DOCUMENT NO. SD-74737-004	SHEET NO. 2 OF 4
		DRAFT WHERE APPLICABLE MUST REMAIN WITHIN DIMENSIONS	MOLEX INCORPORATED		MOLEX INCORPORATED	MOLEX INCORPORATED	MOLEX INCORPORATED	MOLEX INCORPORATED	
		SIZE D	THIS DRAWING CONTAINS INFORMATION THAT IS PROPRIETARY TO MOLEX INCORPORATED AND SHOULD NOT BE USED WITHOUT WRITTEN PERMISSION						

20 19 18 17 16 15 14 13 12 11 10 9 8 7 6 5 4 3 2 1



SECTION A-A

UPDATED 3D MODELS EC NO: USY2008-0243 DRAWN: CCOX CHKD: CHYK APPR: KMONROE 2007/12/07 2007/12/10 2007/12/10	QUALITY SYMBOLS	GENERAL TOLERANCES (UNLESS SPECIFIED)	DIMENSION STYLE	SCALE	DESIGN UNITS	THIRD ANGLE PROJECTION
	▽=0 ▽=0	mm INCH 4 PLACES ± --- ± --- 3 PLACES ± --- ± .005 2 PLACES ± 0.13 ± .01 1 PLACE ± 0.25 ± --- ANGULAR ± 1 °	MM/IN	5:1	METRIC	DRAWN BY DATE CCOX 2006/11/30 CHECKED BY DATE RMAHMOOD 2006/11/30 APPROVED BY DATE RMAHMOOD
	DRAFT WHERE APPLICABLE MUST REMAIN WITHIN DIMENSIONS	MATERIAL NO. 747370004	DOCUMENT NO. SD-74737-004	TITLE SFP ONE PIECE CAGE 0.090" PRESS FIT LEGS BLY-BLY ASSEMBLY		SHEET NO. 3 OF 4
	THIS DRAWING CONTAINS INFORMATION THAT IS PROPRIETARY TO MOLEX INCORPORATED AND SHOULD NOT BE USED WITHOUT WRITTEN PERMISSION					

19 18 17 16 15 14 13 12 11 10 9 8 7 6 5 4 3 2 1

DATE	REV	CHANGES
2007/01/17	A	INITIAL RELEASE
2007/01/24	B	UPDATED VIEWS
2007/02/08	C	ADDED NOTE 5
2007/03/06	D	ADDED SHEETS 2 AND 3
2007/01/23	E	UPDATED 2D VIEWS TO REFLECT CHG'S MADE TO EM-74737-004 REV E.
2007/04/25	F	[1] ADDED REV SHEET; [2] UPDATED REV SHEET NOTES A-E; [3] UPDATED DRAWING TO REFLECT CHG'S MADE TO EM-74737-004-ASSY REV D; [4] DELETED NOTE 2 ON SHT1 AND SHIFTED NUMBERS; [5] ON SHT1 ROTATED BTM_VIEW 180 DEGREES.
2007/11/27	G	[1] UPDATED VIEWS TO MATCH EM-74737-004-ASSY REV E.

UPDATED 3D MODELS EC NO: USY2008-0363 DRAWN BY: CCX CHKD: 2007/12/10 APPR: KMORDE 2007/12/10	QUALITY SYMBOLS	GENERAL TOLERANCES (UNLESS SPECIFIED)	DIMENSION STYLE	SCALE	DESIGN UNITS	THIRD ANGLE PROJECTION														
	▽=0 ▽=0	<table border="1"> <tr> <th></th> <th>mm</th> <th>INCH</th> </tr> <tr> <td>4 PLACES</td> <td>± ---</td> <td>± ---</td> </tr> <tr> <td>3 PLACES</td> <td>± ---</td> <td>± .005</td> </tr> <tr> <td>2 PLACES</td> <td>± 0.13</td> <td>± .01</td> </tr> <tr> <td>1 PLACE</td> <td>± 0.25</td> <td>± ---</td> </tr> </table> ANGULAR ± 1°		mm	INCH	4 PLACES	± ---	± ---	3 PLACES	± ---	± .005	2 PLACES	± 0.13	± .01	1 PLACE	± 0.25	± ---	MM/IN 1:1	METRIC	☉
		mm	INCH																	
	4 PLACES	± ---	± ---																	
3 PLACES	± ---	± .005																		
2 PLACES	± 0.13	± .01																		
1 PLACE	± 0.25	± ---																		
DRAWN BY: CCX CHECKED BY: RMAHMOOD APPROVED BY: RMAHMOOD	DATE: 2006/11/30 DATE: 2006/11/30 DATE:	TITLE: SFP ONE PIECE CAGE 0.090" PRESS FIT LEGS BLY-BLY ASSEMBLY	MATERIAL NO: 747370004	DOCUMENT NO: SD-74737-004	SHEET NO: 4 OF 4															
DRAFT WHERE APPLICABLE MUST REMAIN WITHIN DIMENSIONS	THIS DRAWING CONTAINS INFORMATION THAT IS PROPRIETARY TO MOLEX INCORPORATED AND SHOULD NOT BE USED WITHOUT WRITTEN PERMISSION																			