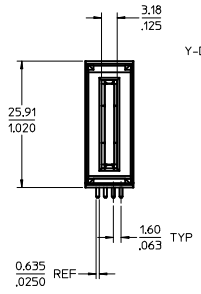
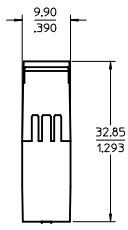
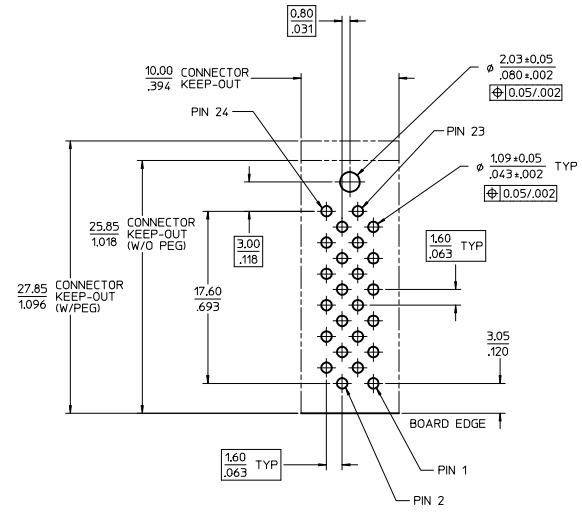
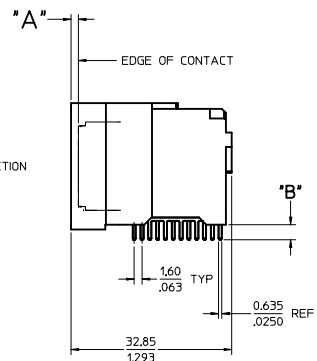


PART NUMBER	DIM 'A'	DIM 'B'	BLADE TYPE	PCB THICKNESS	PLATING	PEGS
75556-5000	0.00/.000	3.06/.120	LONG	2.39/.094	30μ INCH MIN SELECT HARD GOLD IN CONTACT AREA WITH 100μ INCH MIN SELECT TIN IN TAIL AREA OVER 50μ INCH MIN NICKEL OVERALL.	W/O PEGS
75556-5001	0.00/.000	3.81/.150	LONG	3.18/.125		
75556-5100	1.50/.059	3.06/.120	SHORT	2.39/.094		
75556-5101	1.50/.059	3.81/.150	SHORT	3.18/.125		
75556-1500	0.00/.000	3.06/.120	LONG	2.39/.094	30μ INCH MIN SELECT HARD GOLD IN CONTACT AREA WITH 100μ INCH MIN SELECT TIN IN TAIL AREA OVER 50μ INCH MIN NICKEL OVERALL.	W/PEGS
75556-1501	0.00/.000	3.81/.150	LONG	3.18/.125		
75556-1510	1.50/.059	3.06/.120	SHORT	2.39/.094		
75556-1511	1.50/.059	3.81/.150	SHORT	3.18/.125		

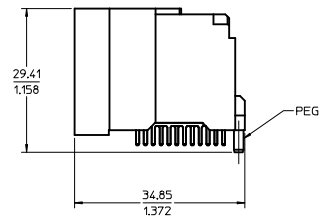


75556-5\*\*\* SHOWN (W/O PEG)

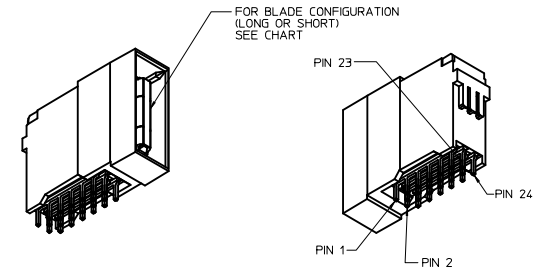


PCB LAYOUT SCALE: 4:1

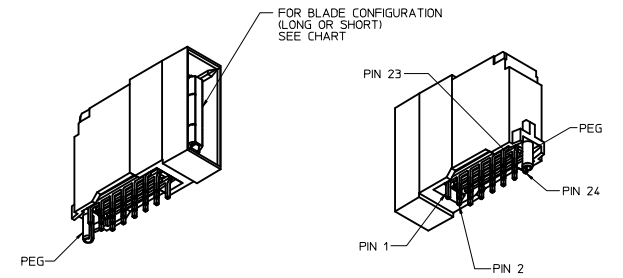
RECOMMENDED MIN PCB THICKNESS : SEE TABLE



75556-15\*\* SHOWN (W/PEG)



75556-5100 SHOWN (W/O PEG)



75556-1500 SHOWN (W/PEG)

- NOTES:
- MATERIALS:  
- HOUSING: 30% GLASS FILLED, LCP 94V-0, COLOR BLACK  
- TERMINALS: COPPER ALLOY  
- PLATING: PER ES-88 - SEE CHART
  - SEE CHART FOR REFERENCE DOCUMENTS
  - PLUG MATES WITH RECEPTACLE ASSEMBLIES: 75542-5000 & 75542-5001
  - MODULE IS DESIGNED FOR SOLDERING TO THE PCB
  - MODULE ASSEMBLY IS RoHS COMPLIANT
  - GATHERABILITY: ±0.65/.026 X-DIRECTION  
±1.30/.051 Y-DIRECTION

REFERENCE DOCUMENTS	
PS-75431-999	PRODUCT SPECIFICATION: PERFORMANCE AND RATINGS
SD-75555-***	FINAL ASSEMBLY CONFIGURATION DRAWING

REV	DESCRIPTION	QUALITY SYMBOLS		GENERAL TOLERANCES (UNLESS SPECIFIED)		DIMENSION STYLE		SCALE	DESIGN UNITS	THIRD ANGLE PROJECTION	
		mm	INCH	mm	INCH	MM/IN	DATE	TITLE			
1	REVISED CHART	4 PLACES	±---	±---	±---	DRAWN BY	DATE	2:1	METRIC	THIRD ANGLE PROJECTION	
2	LEC NO: S2017-0197	3 PLACES	±---	±.008	±---	CHECKED BY	DATE				
3	2016/10/10	2 PLACES	±0.20	±.013	±---	APPROVED BY	DATE				
4	2016/11/14	1 PLACE	±0.33	±---	±---	MATERIAL NO.	DATE				
5	2016/11/15				ANGULAR ±1/2°	SEE CHART	2005/04/19				
		DRAFT WHERE APPLICABLE MUST REMAIN WITHIN DIMENSIONS				DRAWN BY: ADRA TNOL		DATE: 2005/04/19		TITLE: EXTREME POWERMASS 150 AMP MODULE, PLUG	
						CHECKED BY: MDATA		DATE: 2005/04/19		MOLEX INCORPORATED	
						APPROVED BY: APATEL		DATE: 2005/04/19		DOCUMENT NO. SD-75556-100	
						MATERIAL NO. SEE CHART		DATE: 2005/04/19		SHEET NO. 1 OF 1	
						THIS DRAWING CONTAINS INFORMATION THAT IS PROPRIETARY TO MOLEX INCORPORATED AND SHOULD NOT BE USED WITHOUT WRITTEN PERMISSION					