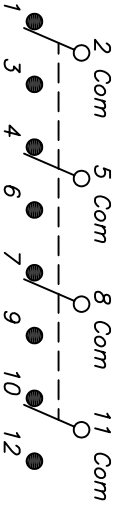


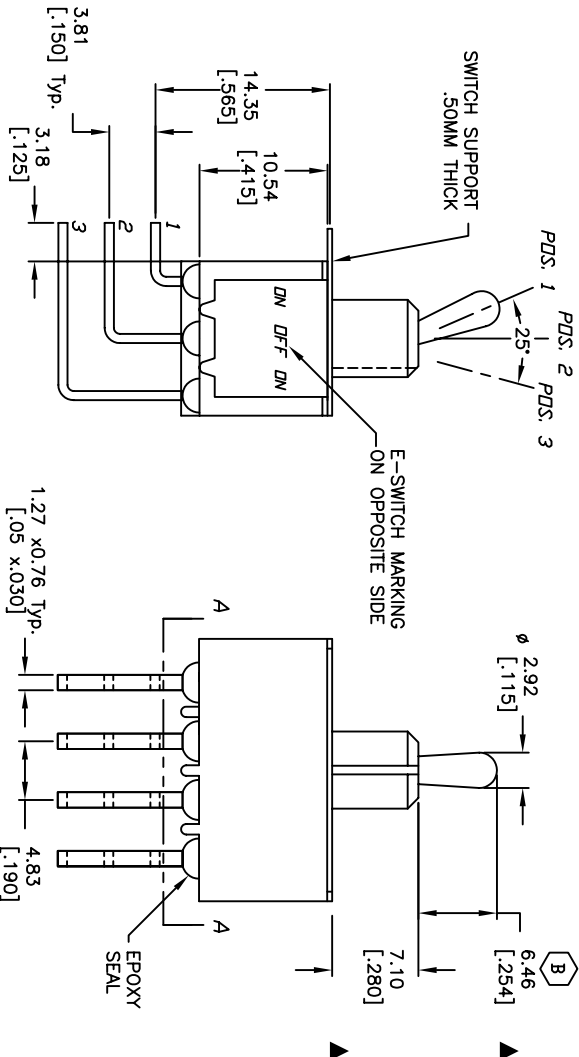
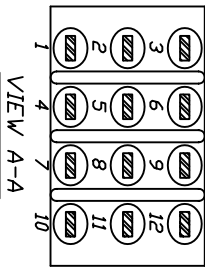
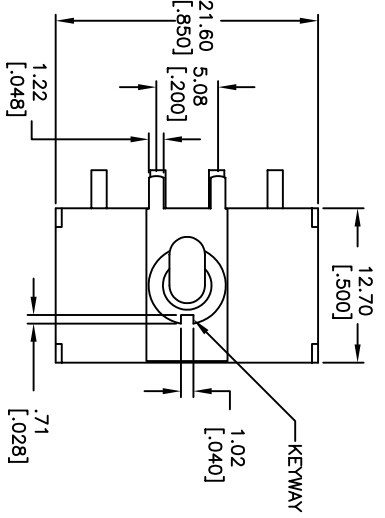
RECOMMENDED P.C.B. LAYOUT
SCALE: 2X



SWITCH FUNCTION		
PQS. 1	PQS. 2	PQS. 3
DN	OFF	DN
2-3,5-6	DPEN	2-1,5-4
8-9,11-12		8-7,11-10

NOTES:

1. ALL DIMENSIONS IN MM. [INCH]
2. GENERAL TOLERANCE: X.X=±0.4
X.XX=±0.25
3. TERMINAL NUMBERS FOR REF ONLY
4. RATING: 5A @120VACor 28VDC
2A @250VAC. w/resistive loads
5. CONTACT & TERM MATERIAL:
Cu Alloy w/Silver plate.
6. ELECTRIC LIFE: 50,000 make-and-break cycles
at full load.
7. INSULATION RESISTANCE: 1,000 Mega-ohm min.
8. DIELECTRIC STRENGTH: 1,000 V RMS @sea level.
9. OPERATING TEMP.: -30°C to 85°C
10. ▲ DENOTES CRITICAL PARAMETER.



REV.	PCR No.	DESCRIPTION	DATE	CHKD
B	18526	* UPDATED FOR ACTUATOR HEIGHT	5/11/09	BLR
A	13403	* RELEASED FOR PRODUCTION	8/26/03	AR

TITLE		SCALE	DATE	DR	DWG	REV
1004P3T2B4M7QE		2:1	5/11/09	BLR	T146010	B



THE INFORMATION CONTAINED IN THIS DOCUMENT IS PROPRIETARY TO E-SWITCH AND IS NOT TO BE COPIED OR TRANSFERRED