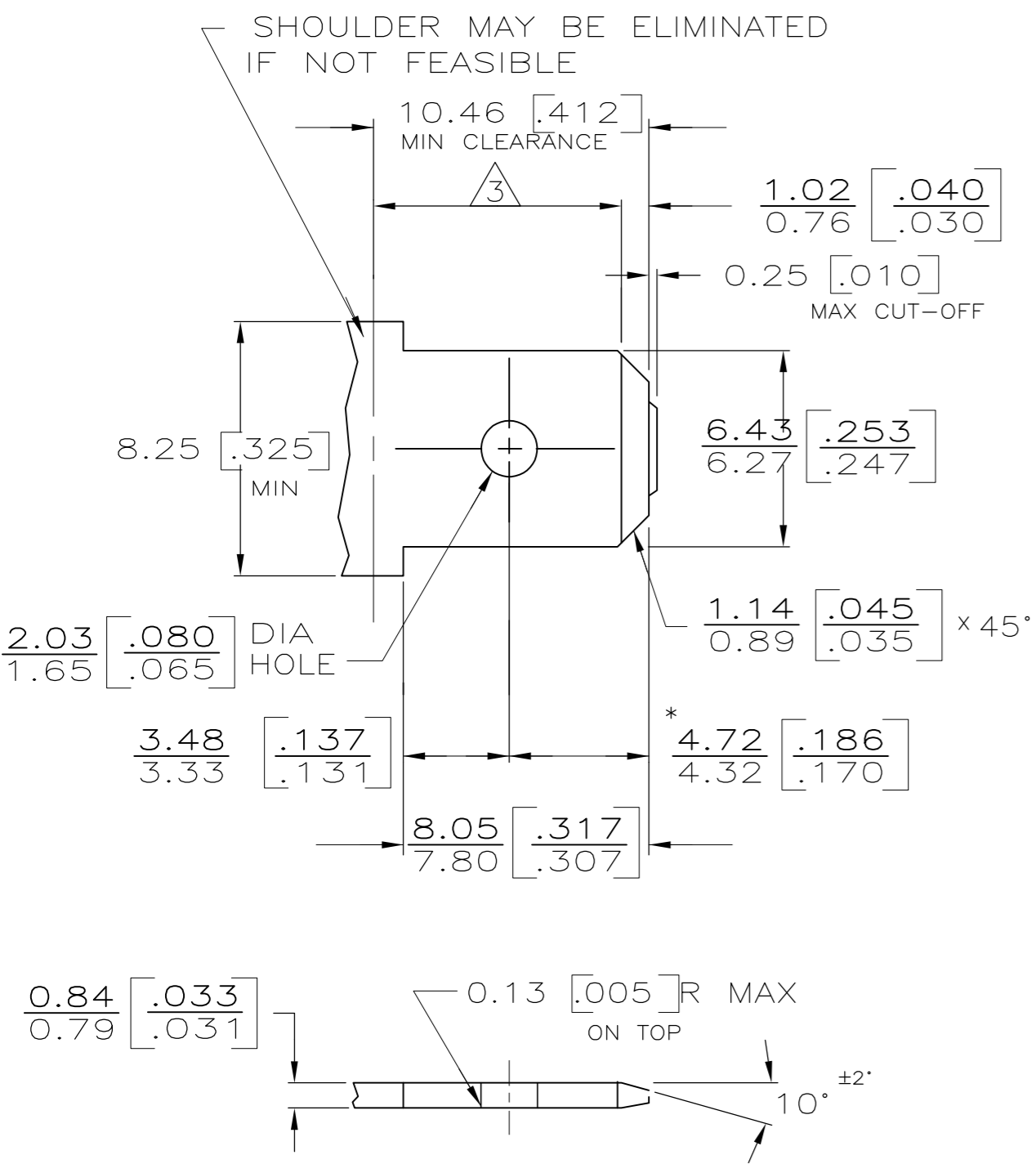


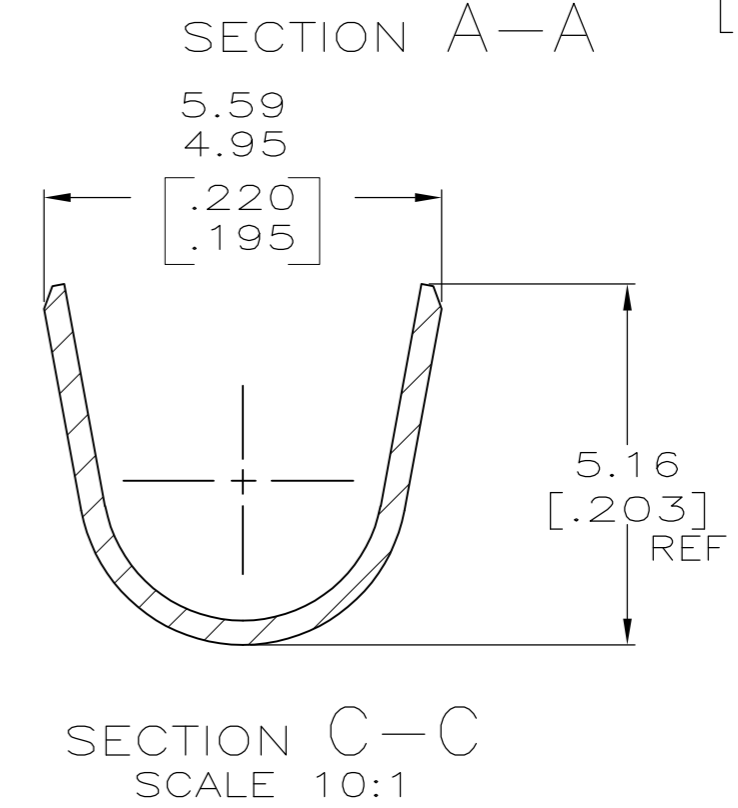
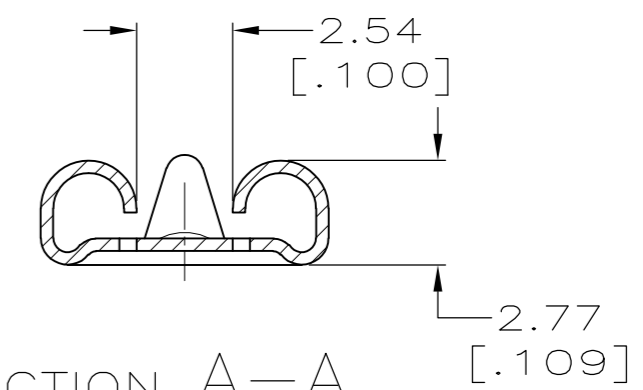
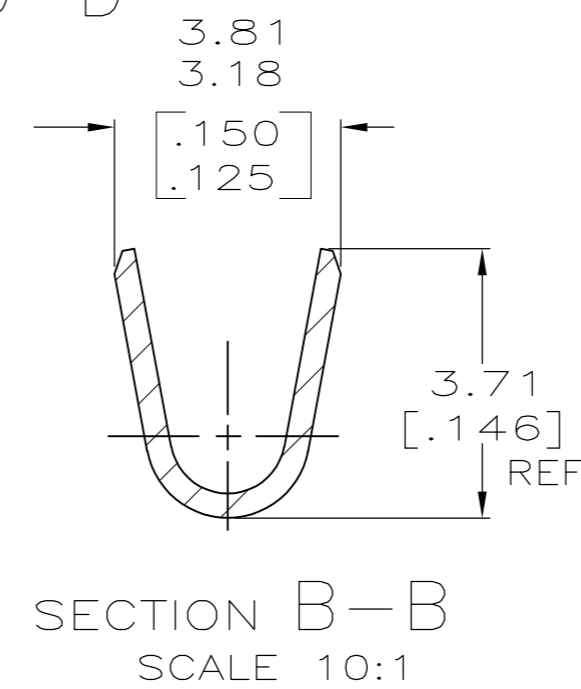
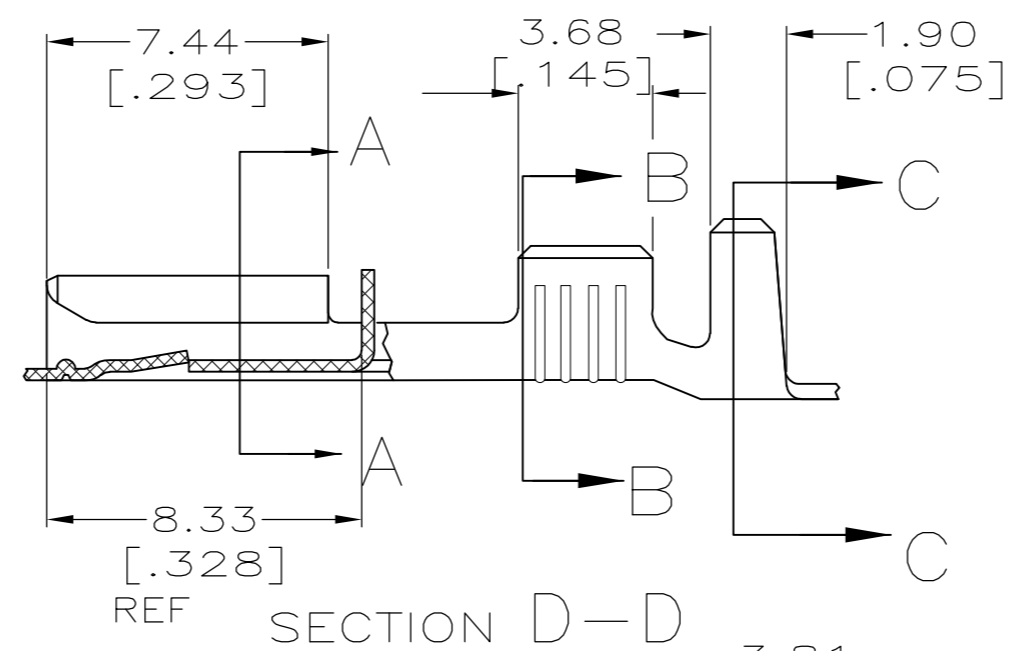
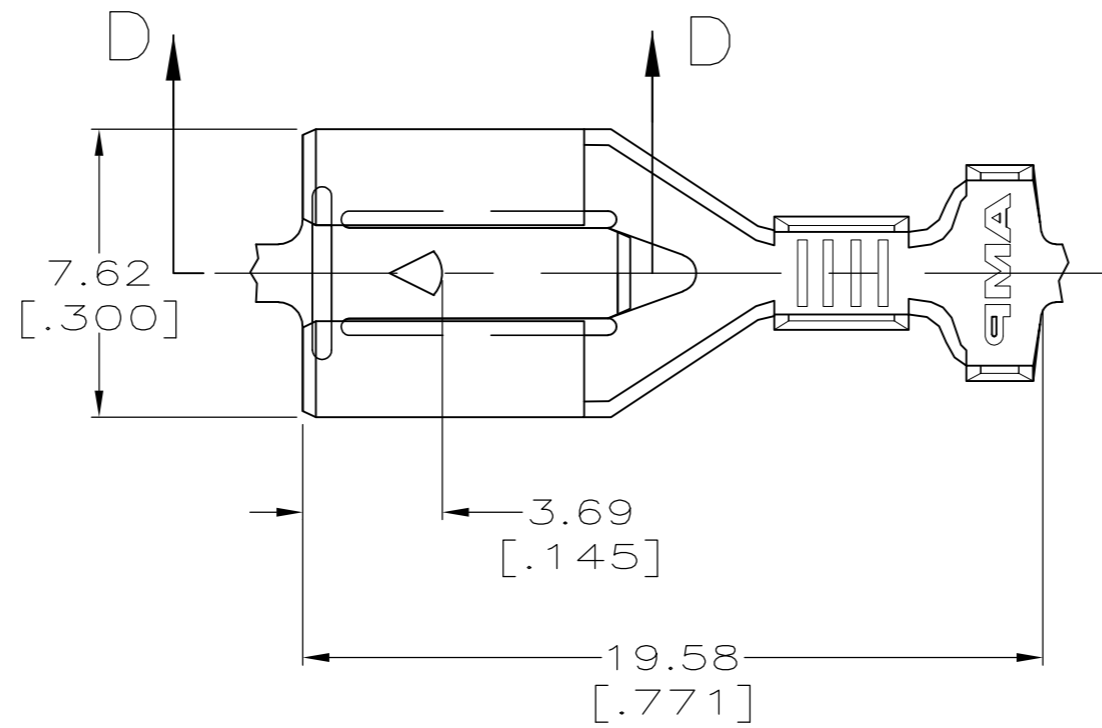
THIS DRAWING IS UNPUBLISHED. RELEASED FOR PUBLICATION
 © COPYRIGHT - By - ALL RIGHTS RESERVED.

LOC		DIST		REVISIONS			
P	LTR	DESCRIPTION	DATE	DWN	APVD		
AF	50						
		C2	REV PER ECR 11-017004	16AUG11	JR	JH	

SUGGESTED MATING TAB



- 1 - MATL: 1/2H BRASS OR NICKEL PL STEEL.
 - 2 - NO BURRS PERMISSIBLE AT HOLE.
 - 3 - MUST BE FLAT WITHIN 0.076 [.003] OVER THIS LENGTH.
 - 4 - TIN PLATING IS REQUIRED ON BRASS WHEN TERMINAL TEMP. IS OVER 225°F.
 - 5 - HOLE MUST BE SYMMETRICAL ABOUT TAB Q WITHIN 0.076 [.003]
- * TO BE USED ONLY WHEN SHOULDER IS ELIMINATED.



- 1 CONTINUOUS STRIP ON REELS.
- 2 REF CRIMP INFORMATION:
WIRE CRIMP: .110 F TYPE
INSULATION CRIMP: .180, F TYPE
- 3 #18-#14 AWG, 2.29-3.94 [.090-.155] DIA OR TWO #18'S WITH 1.90 [.075] MAX INSULATION
- 4 PRELIMINARY - NOT FOR PRODUCTION

SILVER 0.00381 [.000150] MIN	4 1217094-3
TIN 0.002032 [.000080] MIN	1217094-2
-	1217094-1
FINISH	PART NO

THIS DRAWING IS A CONTROLLED DOCUMENT.		DWN	JR RUTH	6/19/98	 TE Connectivity	RECEPTACLE, POSITIVE LOCK, 6.35 [.250] SERIES		
DIMENSIONS: MM [INCHES]		CHK	MS FEHER	6/19/98		SIZE	CAGE CODE	DRAWING NO
TOLERANCES UNLESS OTHERWISE SPECIFIED:		APVD	J GILLISPIE	6/19/98		114-2074	00779	1217094
0 PLC ± - 1 PLC ± - 2 PLC ± 0.25 [.010] 3 PLC ± - 4 PLC ± - ANGLES ± -		PRODUCT SPEC				RESTRICTED TO		
MATERIAL H06 BRASS		FINISH	SEE TABLE		WEIGHT	CUSTOMER DRAWING		
				SCALE	5:1	SHEET	1 of 1	
				REV	C2			