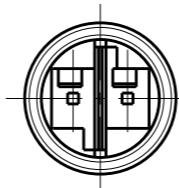


THIS DRAWING IS UNPUBLISHED. RELEASED FOR PUBLICATION 2005
© COPYRIGHT 2005 BY - ALL RIGHTS RESERVED.

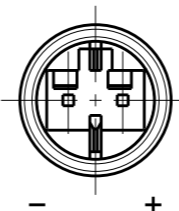
REVISIONS

P	LTR	DESCRIPTION	DATE	DWN	APVD
G		REVISED PER ECR-16-002347	22FEB2016	RS	JL
H		ECR-16-003641	11MAY2016	RS	JL
J		ECR-16-017348	24FEB2017	RK	JL
M		REVISED PER ECO-17-008502	17JUL2017	SK	JL

HIGH-VOLTAGE
Keying HV-1

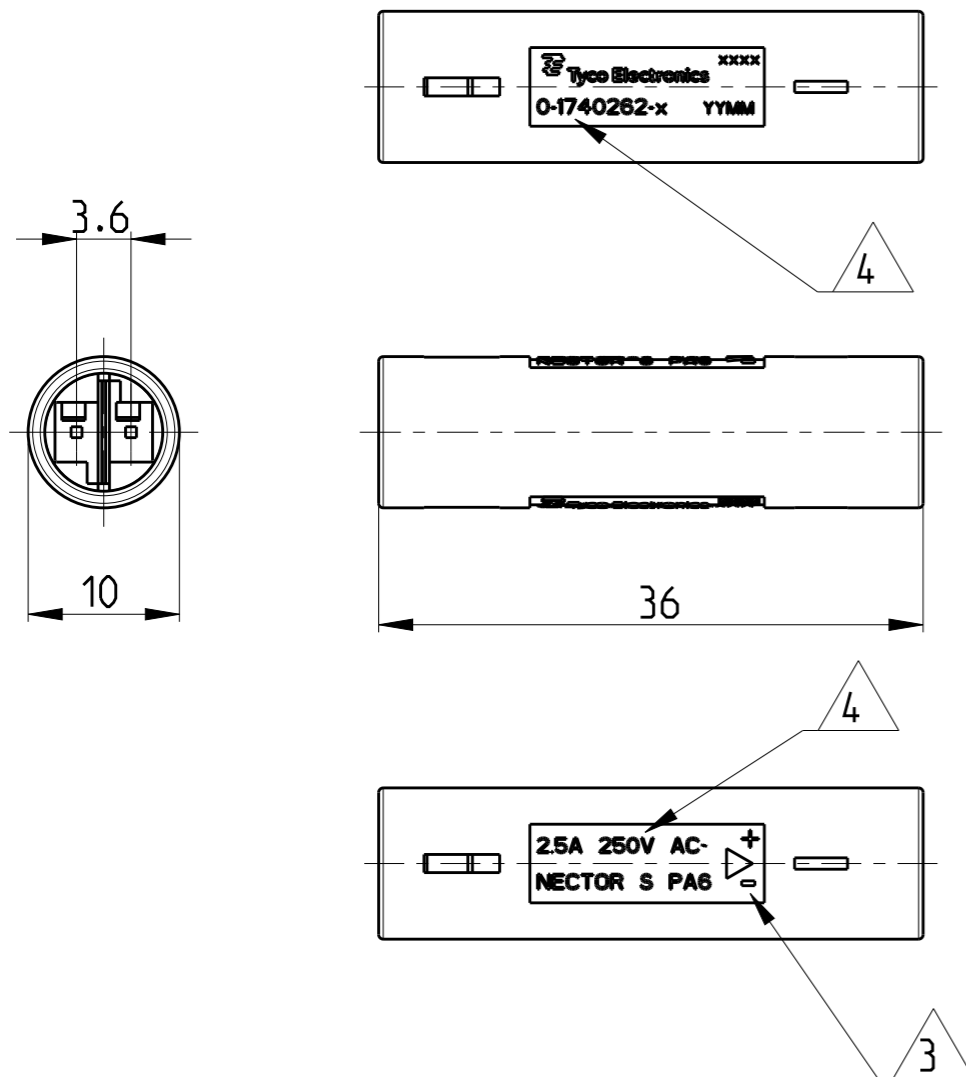


LOW-VOLTAGE
Keying LV-2

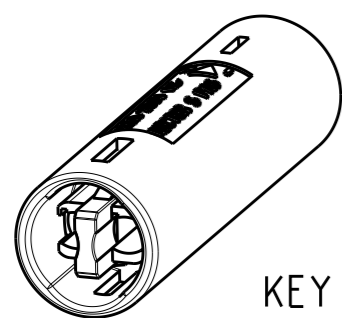


- Notes:
1. cavities designed for MQS Pin contact PN 1740335-x
 2. Counterpart is Plug PN 1740259-x and corresponding products of the NECTOR S family

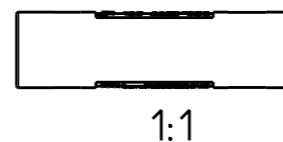
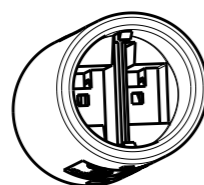
- △3 Polarity marking +/- only for DC version (Keying LV-2)
- △4 PN specific marking
- △5 OBSOLETED.



LV-2	LOW-VOLTAGE 125VAC/VDC	7A/125VAC/VDC	BLACK	0-1740451-3
LV-2	LOW-VOLTAGE 125VAC/VDC	7A/125VAC/VDC	YELLOW	0-1740451-2
LV-1	LOW-VOLTAGE 125VAC/VDC	7A/125VAC/VDC	LIGHT GREY	0-1740451-1
HV-3	HIGH-VOLTAGE 125V AC	6A/125V AC ~	BLUE	0-1740262-6
HV-1	HIGH-VOLTAGE 250V AC	2.5A/250V AC ~	BLACK (ANTHRACITE)	0-1740262-2
HV-1	HIGH-VOLTAGE 250V AC	2.5A/250V AC ~	NATURAL (WHITE)	0-1740262-1
Keying	REMARKS	Marking	COLOR	PN



KEYING HV-1
AS SHOWN



1:1

THIS DRAWING IS A CONTROLLED DOCUMENT.

DIMENSIONS:	TOLERANCES UNLESS OTHERWISE SPECIFIED:
mm	
0 PLC	±0.2
1 PLC	±0.2
2 PLC	±0.2
3 PLC	±
4 PLC	±
ANGLES	±1°
FINISH	-

DWN	H.ATZMANN	07FEB2005
CHK	M.OFENLOCH	07FEB2005
APVD	T.GERLACH	07FEB2005
PRODUCT SPEC	108-94018	
APPLICATION SPEC	114-18751	
WEIGHT	2.2 g	

TE TE Connectivity			
NAME NECTOR S Connector System Outlet			
SIZE	CAGE CODE	DRAWING NO	RESTRICTED TO
A3	00779	C-1740262	-
CUSTOMER DRAWING		SCALE	SHEET
		2:1	1 OF 1
		REV	M