

### 6.0 x 3.8mm Compact Tactile Switch

#### Features

##### Optimized Mechanical Features

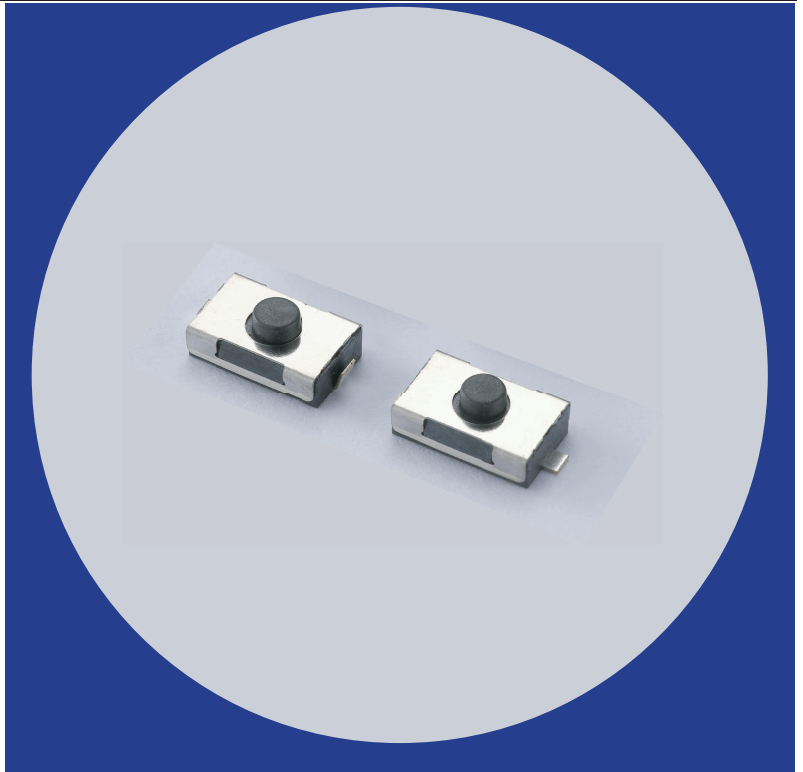
- Surface mount gull-wing and J bend terminal configurations
- Compatible with IR reflow and manual soldering
- Variety of operating force & travel options

##### Optimized Contact System

- Excellent tactile feedback

##### Materials

- Silver coated terminals for better solderability
- High temperature materials (UL94V-0)
- RoHS compliant



### Electrical and Mechanical Specifications

#### Switch Contact Resistance

50 milliohms maximum

#### Insulation Resistance

100 Megohms minimum between terminals

#### Maximum Rating

50mA, 12 VDC

#### Dielectric Strength

250 VAC for 1 minute between adjacent terminals

#### Operating Force

160 gf or 260 gf

#### Travel

0.15mm or 0.25mm

#### Operating Temperature

- 40°C to +85°C

#### Storage Temperature

- 40°C to +85°C

#### Actuator Strength

3 Kgf maximum

#### Actuation Life

160 gf: 100,000 cycles

260 gf: 100,000 cycles

#### Allowable Solder Time

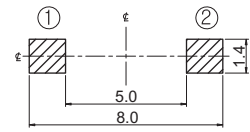
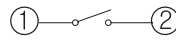
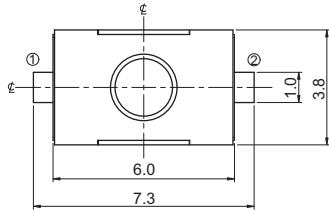
IR Reflow: Up to 5 seconds at 260°C.

Manual soldering: Up to 3 seconds at 350°C

#### Packaging

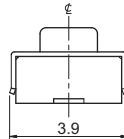
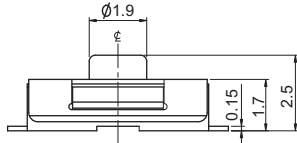
Standard: Tape and reel packaging with 330mm diameter reel and 16mm wide plastic tape

## CTS SERIES 222GM - Surface Mount Gull Wing



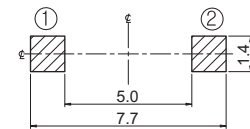
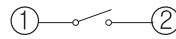
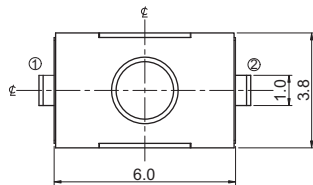
**CIRCUIT DIAGRAM**

**PCB LAYOUT**



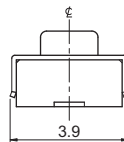
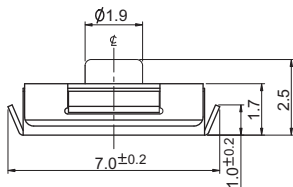
DIMENSION : mm  
STANDARD TOLERANCE :  
.X (1 PLACE) : ±0.2

## CTS SERIES 222GJ - Surface Mount J Bend Terminal



**CIRCUIT DIAGRAM**

**PCB LAYOUT**



DIMENSION : mm  
STANDARD TOLERANCE :  
.X (1 PLACE) : ±0.2

## Ordering Information

