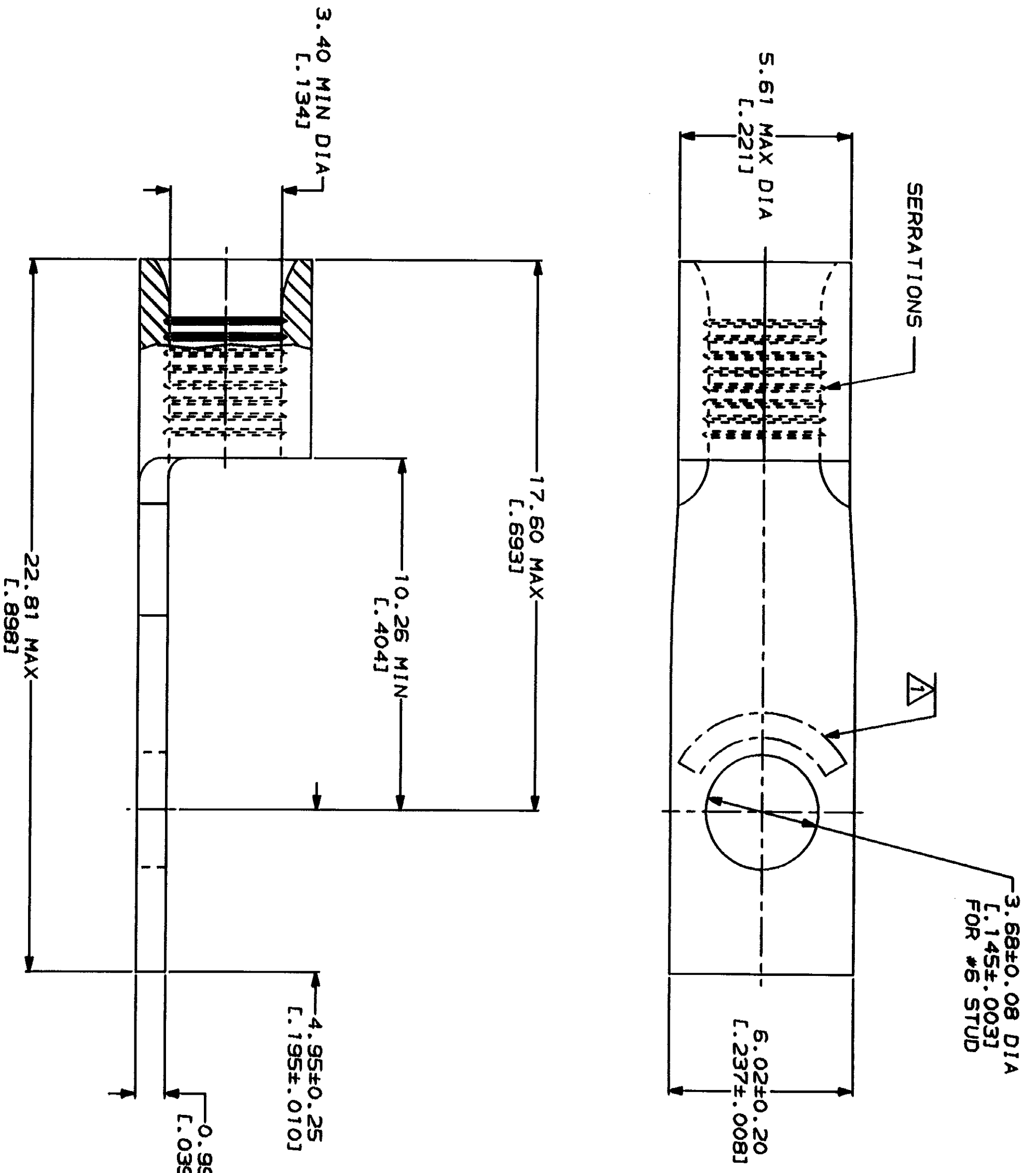


LOC	DATE	REVISIONS	DESCRIPTION	DATE	APP'D
G	14	A	REVISED PER 0720-0230-93		



WIRE RANGE	E13288 UL Listed
12-10 AWG STRANDED	12-10 AWG STRANDED
NOT CERTIFIED	MILITARY P/N AND CLASS
CERTIFIED	NOT APPLICABLE

△ STAMP AMP 12-10* APPROX AS SHOWN



AMP INCORPORATED
CUSTOMER SERVICE SYSTEMS

FOR ADDITIONAL
PRODUCT INFORMATION OR
COPIES OF DRAWINGS
AND TECHNICAL DOCUMENTS

FOR APPLICATION
TOOLING INFORMATION
FOR ORDER ENTRY

MAX RECOMMENDED OPERATING
TEMPERATURE:
170°C MAX

VOLTAGE RATING:
NOT APPLICABLE

WIRE CROSS SECTIONAL AREA RANGE:
2.62-6.64mm² [S.180-13,100] CIR MILS
STRANDED

DO NOT SCALE PRINT.
UNLESS SPECIFIED
DIMENSIONS IN MILLIMETERS
TOLERANCES ON:
1 PLG DEC ± .1
2 PLG DEC ± .1
3 PLG DEC ± .1
ANGLES

FINISH
TIN PLATE
0.00254[L.000100] MIN
THK PER MIL-T-10727

DR 1-28-93
TA BRIKMAN
CHK 1-28-93
DA PATTERSON
APPD 1-28-93
DE MILLER
APPD 1-28-93
JL HECKLEY
PRODUCT SPEC

AMP Incorporated
Harrisburg, PA 17105-3508

TERMINAL, RECTANGULAR
TONGUE, BUDGET

SIZE CASE CODE DRAWING NO
G 00779 G-327959
SCALE 8:1 SHEET 1 OF 1