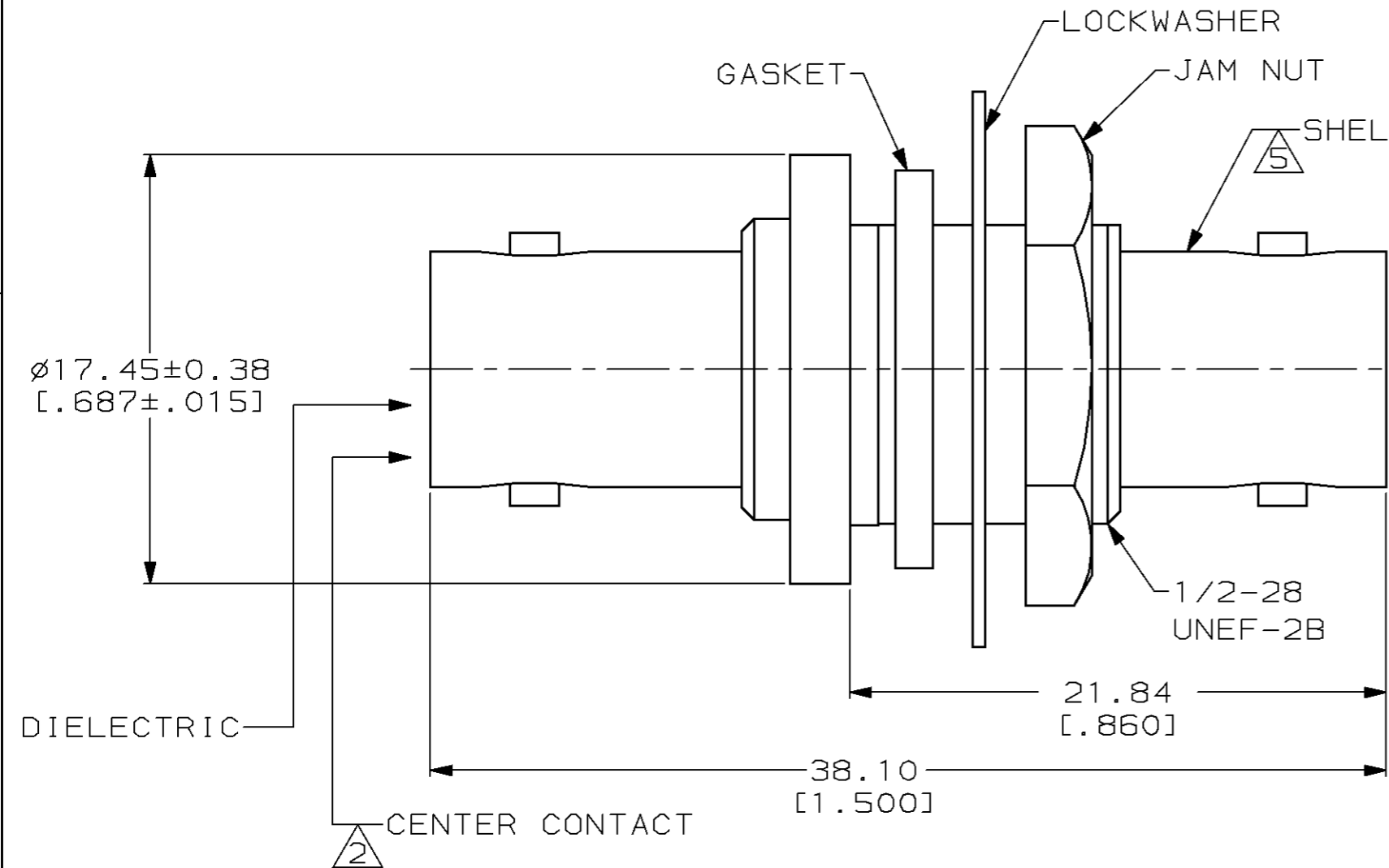
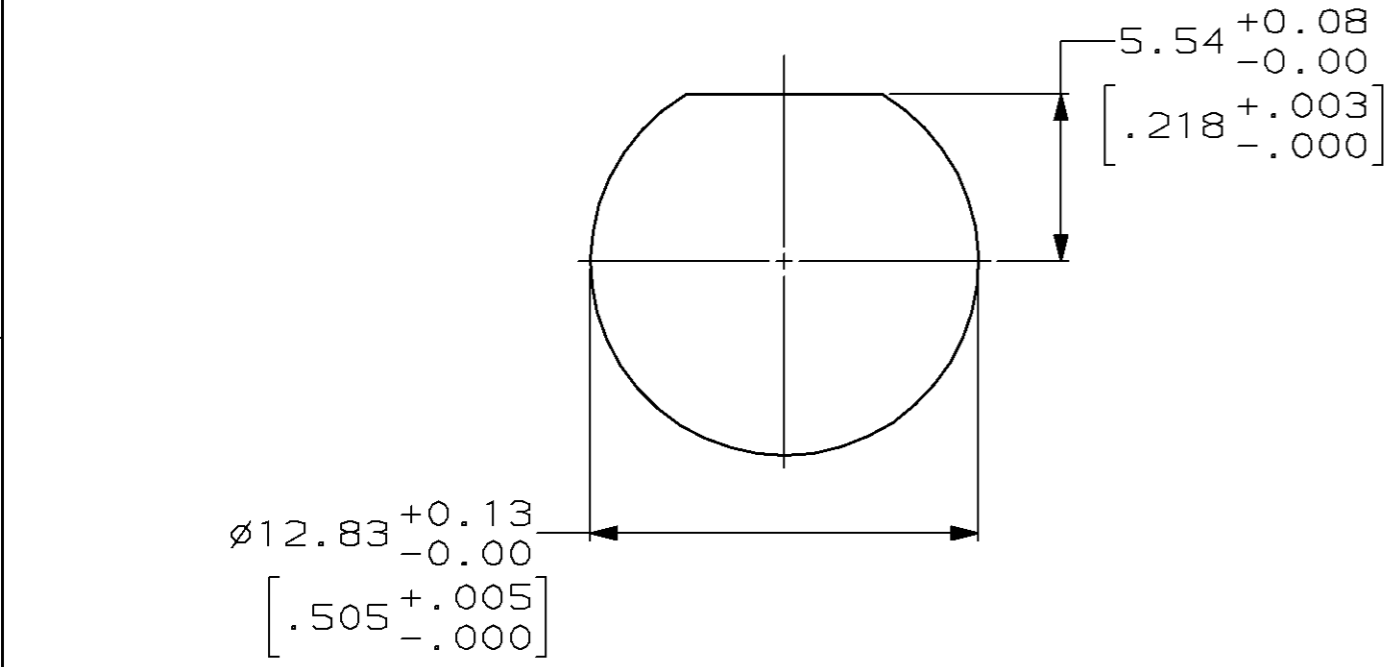


THIS DRAWING IS UNPUBLISHED. RELEASED FOR PUBLICATION, 19
 © COPYRIGHT 19 BY AMP INCORPORATED. ALL INTERNATIONAL RIGHTS RESERVED.

LOC	DIST	P	F	ZONE	LTR	DESCRIPTION	DATE	APPD
AJ	16	✓	✓		K	REV PER 0G30-0298-98	27AUG98	JH



- △1 MATERIALS:
 DIELECTRIC: PTFE
 CENTER CONTACT: BERYLLIUM COPPER
 SHELL: BRASS
 GASKET: SILICONE
 LOCKWASHER: PHOSPHOR BRONZE
 JAM NUT: BRASS
- △2 SILVER PLATE PER QQ-S-365,
 5.08µm [.000200] MIN THICKNESS
3. PRODUCT MUST BE INTERMATEABLE
 PER MIL-C-39012
4. COMPARABLE UG/U CONNECTOR 492D
- △5 NICKEL PLATE PER QQ-N-290,
 2.54µm [.000100] MIN THICKNESS



RECOMMENDED PANEL CUTOUT

330024
 PART NUMBER

DO NOT SCALE PRINT. UNLESS SPECIFIED DIMENSIONS IN mm [INCHES] TOLERANCES ON: 2 PLC DEC ± 0.08 [.003] 3 PLC DEC ± - ANGLES ± -		DR 2-28-92 M.E. COWHER	AMP Incorporated Harrisburg, PA 17105-3608		
MATERIAL △1	CHK 3-2-92 M. PHILLIPS	APPD 3-2-92 M. PHILLIPS			
FINISH △2 △5	APPD 3-3-92 M.E. COWHER	PRODUCT SPEC -	NAME ADAPTER, JACK, BHD, BNC		
	APPLICATION SPEC -	WEIGHT -	SIZE B	CAGE CODE 00779	DRAWING NO 330024
			SCALE 4:1	SHEET 1 OF 1	