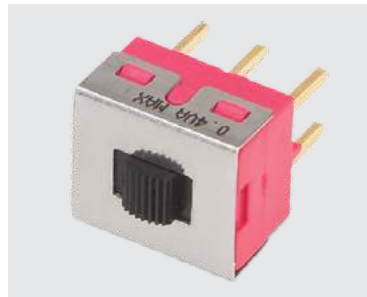
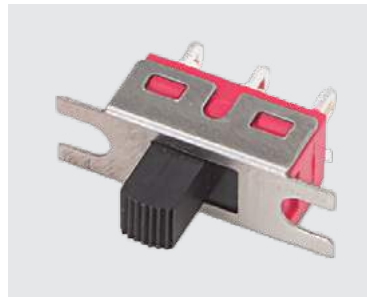
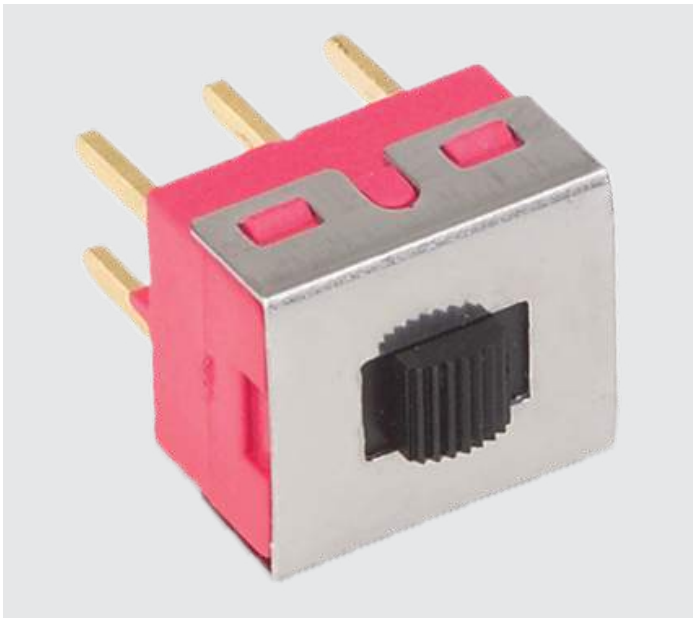


# 4M-SERIES

## 4M-Series

### MINIATURE SLIDE SWITCHES

The 4M-Series miniature slide switches offer a variety of ratings, circuits, contact materials, and terminal platings. With 14 termination choices and 8 actuator styles, this versatile switch adapts to a variety of applications, and is able to withstand temperatures from -30°C to +85°C.



#### Product Highlights:

- Two or Three Position Circuitry
- 125/250VAC or up to 28VDC
- Available in Silver, Gold or Tin Plating
- Supplied in Bulk or Tape Reel
- UL and CSA Approvals Available

#### Typical Applications:

- Consumer Electronics
- Instrumentation
- Computer Servers / Peripherals
- Test / Measurement

#### Resources:

[Download 3D CAD Files](#)

[IGS >](#) [STP >](#)



**Carling Technologies, Inc.**  
60 Johnson Avenue, Plainville, CT 06062  
Email: [sales@carlingtech.com](mailto:sales@carlingtech.com)  
Application Support: [team2@carlingtech.com](mailto:team2@carlingtech.com)  
Phone: 860.793.9281 Fax: 860.793.9231

[www.carlingtech.com](http://www.carlingtech.com)

### Electrical

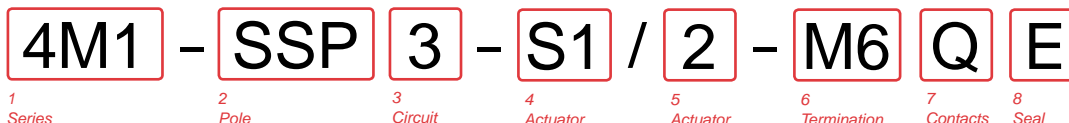
Contact Rating refer to ordering scheme  
 Electrical Life 30,000 make & break cycles @ full load  
 Contact Resistance 10 mΩ max. initial @ 2-4 VDC 100mA for both silver & gold plated contacts  
 Insulation Resistance 1000 MΩ min.  
 Dielectric Strength 1500 Volts RMS @ sea level

### Physical

Operating Temperature -30°C to +85°C  
 Solder Heat Resistance MIL-STD-202, Method 210

### Material

Case Dially phthalate (DAP) (UL 94V-0)  
 Slide Handle Nylon  
 Housing Stainless Steel  
 Terminal Seal Epoxy



**1 SERIES**  
**4M1** Miniature Slide Switch

**2 POLES**  
**SSP** Single Pole      **SDP** Double Pole

**3 CIRCUIT**  
 ( ) - momentary  
**Switching Position:**

<b>1</b>	2-1, 5-4	<b>2</b>	Connected Terminals	<b>3</b>	2-3, 5,6
1	ON	NONE	ON	ON	
3	ON	OFF	ON	ON	

**4 ACTUATOR**

<b>S1</b>	.201" height	<b>S5</b>	.053" height (for DPDT only)
<b>S2</b>	.301" height	<b>S6</b>	.488" height
<b>S3</b>	.370" height	<b>S7</b>	.311" height
<b>S4</b>	.140" height	<b>T1</b>	.209" height (for DPDT only)

**5 ACTUATOR COLORS**

<b>1</b>	White	<b>6</b>	Green
<b>2</b>	Black	<b>7</b>	Blue
<b>3</b>	Red	<b>8</b>	Brown
<b>4</b>	Orange	<b>9</b>	Gray
<b>5</b>	Yellow		

**6 TERMINATION**

<b>M1</b>	Solder Lug	<b>M61</b>	Snap-In, 90°
<b>M2</b>	PCB	<b>M7</b>	PC Mount, 90° vertical
<b>M3</b>	Quick Connect	<b>M71</b>	Snap-In, 90°
<b>M5-1</b>	Wire Wrap .750	<b>VS2</b>	PC Mount, U bracket, .350 height
<b>M5-2</b>	Wire Wrap .964	<b>VS3</b>	PC Mount, U bracket, .575 height
<b>M5-3</b>	Wire Wrap .425	<b>N1</b>	Solder Lug without mounting tabs
<b>M5-4</b>	Wire Wrap 1.062		
<b>M6</b>	PC Mount, 90° horizontal		

**7 CONTACTS / TERMINALS**

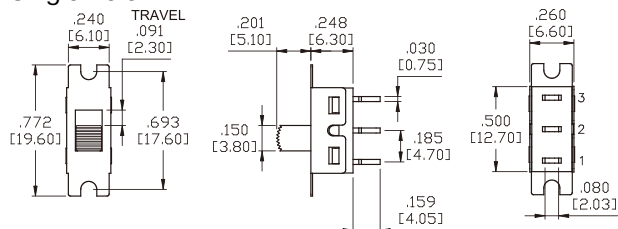
	Contact Material	Terminal Plating	Rating	Approvals
<b>G</b>	silver <sup>1</sup>	gold over silver	5A 125VAC or 28VDC 2A 250VAC	
<b>K</b>	gold <sup>2</sup>	tin <sup>3,5</sup>	0.4VA max 20V max (AC/DC)	N/A
<b>P</b>	silver <sup>1</sup>	tin <sup>3,5</sup>	5A 125VAC or 28VDC 2A 250VAC	
<b>Q</b>	silver <sup>1</sup>	silver <sup>1</sup>	5A 125VAC or 28VDC 2A 250VAC	
<b>R</b>	gold <sup>2</sup>	gold <sup>2</sup>	0.4VA max 20V max (AC/DC)	N/A

**8 EPOXY SEAL**  
**E** Epoxy Seal      **0** without Epoxy Seal

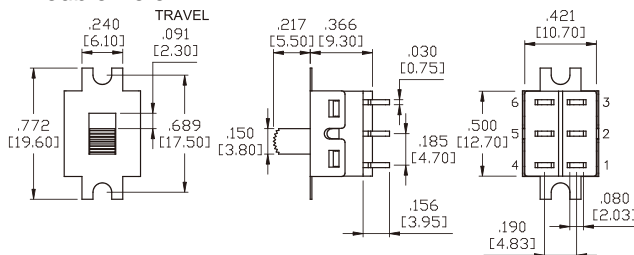
- Notes:
- Movable contact & terminal platings: silver over copper alloy
  - Movable contact & terminal platings: gold over nickel over copper alloy
  - Terminals platings: tin over nickel over copper alloy, available with PC terminations only
  - Non-Black, white and red colors require a minimum order of 2500 pieces
  - Tin option available with PC type terminations only

### 4M1-Series Dimensional Specifications: in. [mm]

Single Pole



Double Pole



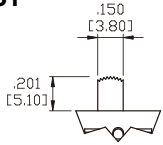
\*Manufacturer reserves the right to change product specification without prior notice.

## 4M1-Series Dimensional Specifications: in. [mm]

### Actuator Options

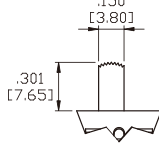
\* All actuator length shown is SPDT model with M1 and M2 terminals.

**S1**



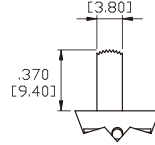
\* Add 0.40 (.016) from actuator height for DPDT-M1 and M2 model.

**S2**



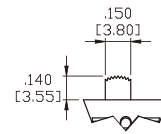
\* Add 0.20 (.008) from actuator height for DPDT-M1 and M2 model.

**S3**



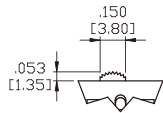
\* Add 0.30 (.012) from actuator height for DPDT-M1 and M2 model.

**S4**

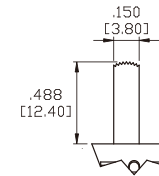


\* Add 0.40 (.016) from actuator height for DPDT-M1 and M2 model.

**S5**

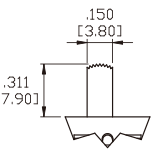


**S6**



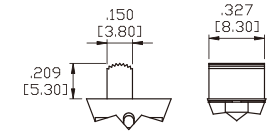
\* Add 0.70 (.028) from actuator height for DPDT-M1 and M2 model.

**S7**



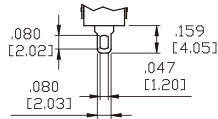
\* Add 0.40 (.016) from actuator height for DPDT model.

**T1 for DPDT only**



### Termination Options

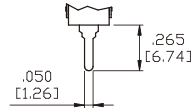
**M1 Standard Solder Lug**



THK .030 [0.75]

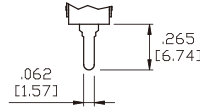
\* Standard with Mounting Tabs.

**M2 PC Thru-Hole**



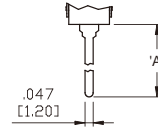
THK .030 [0.75]

**M3 Quick Connect**



THK .030 [0.75]

**M5 Wire Wrap**

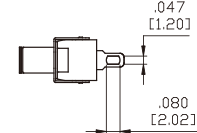
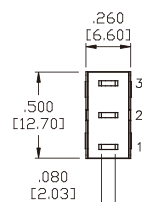
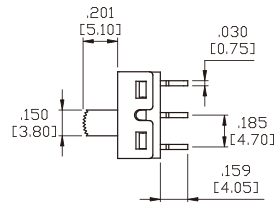
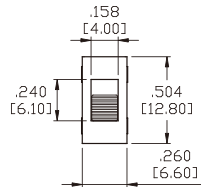


THK .030 [0.75]

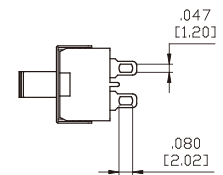
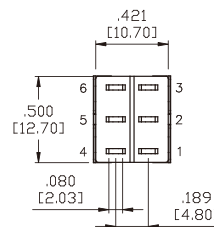
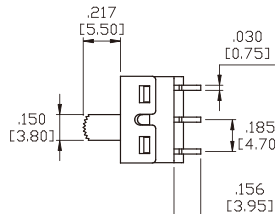
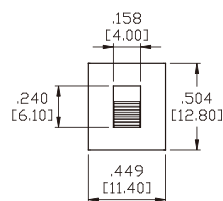
OPTION CODE	DIM.'A'
<b>M5-1</b>	.750 [19.05]
<b>M5-2</b>	.964 [24.48]
<b>M5-3</b>	.425 [10.80]
<b>M5-4</b>	1.062 [26.97]

### Termination Options without Mounting Tabs

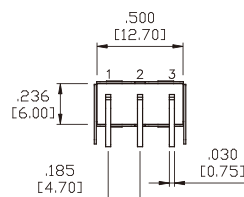
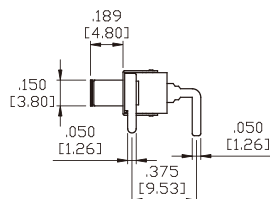
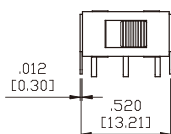
**N1 Single Pole**



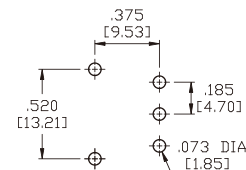
**N1 Double Pole**



**M6 Single Pole**



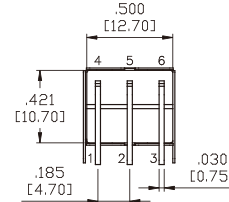
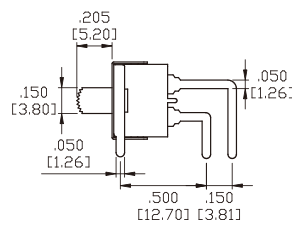
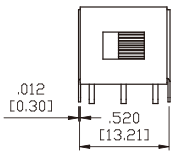
**P.C. MOUNTING**



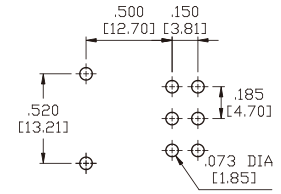
## 4M1-Series Dimensional Specifications: in. [mm]

### Termination Options

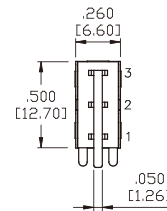
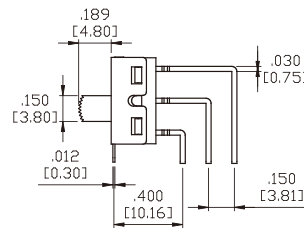
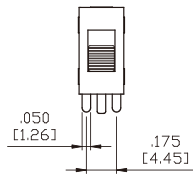
#### M6 Double Pole



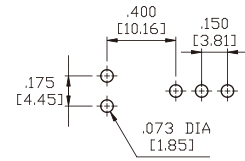
#### P.C.MOUNTING



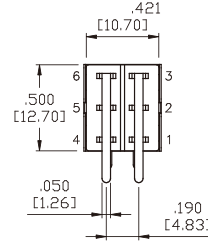
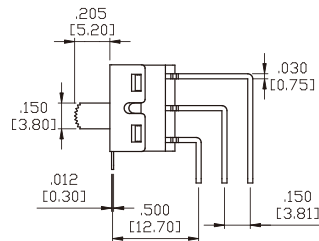
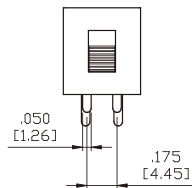
#### M7 Single Pole



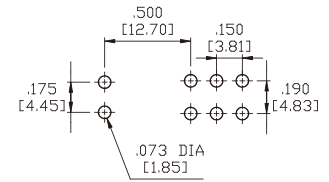
#### P.C.MOUNTING



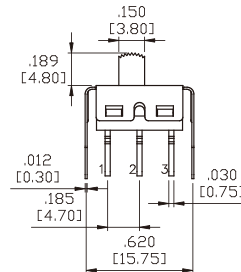
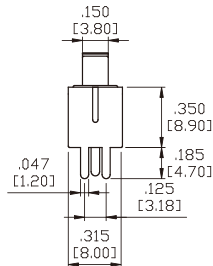
#### M7 Double Pole



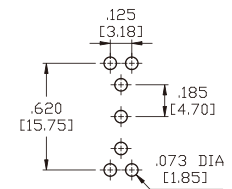
#### P.C.MOUNTING



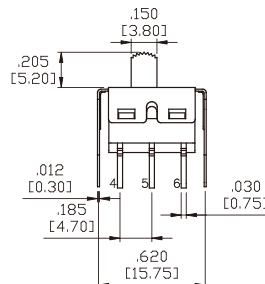
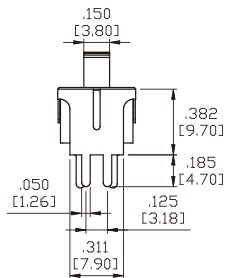
#### VS2 Single Pole



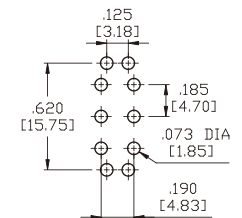
#### P.C.MOUNTING



#### VS2 Double Pole



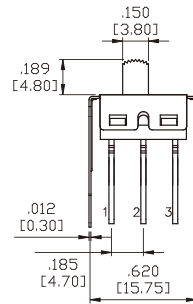
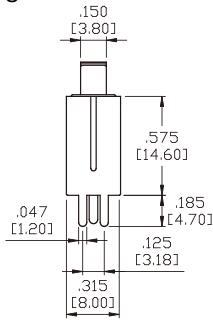
#### P.C.MOUNTING



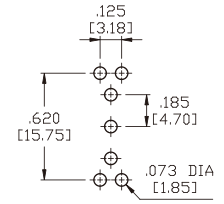
## 4M1-Series Dimensional Specifications: in. [mm]

### Termination Options

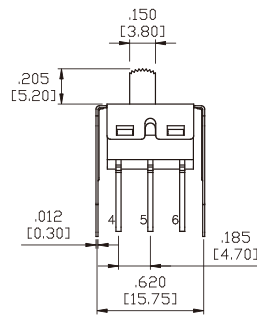
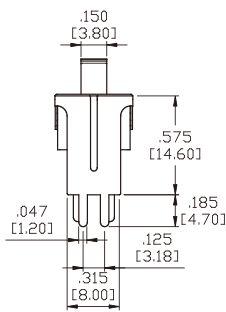
#### VS3 Single Pole



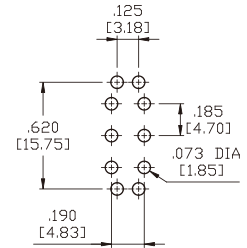
#### P.C.MOUNTING



#### VS3 Double Pole



#### P.C.MOUNTING







## **Worldwide Headquarters**

Carling Technologies, Inc.  
60 Johnson Avenue, Plainville, CT 06062  
**Phone:** 860.793.9281 **Fax:** 860.793.9231  
**Email:** sales@carlingtech.com

**Northern Region Sales Office:** nrsm@carlingtech.com  
**Southeast Region Sales Office:** sersm@carlingtech.com  
**Midwest Region Sales Office:** mrrsm@carlingtech.com  
**West Region Sales Office:** wrsm@carlingtech.com  
**Latin America Sales Office:** larsm@carlingtech.com

## **Asia-Pacific Headquarters**

Carling Technologies, Asia-Pacific Ltd.,  
Kowloon, Hong Kong  
**Phone:** Int + 852-2737-2277 **Fax:** Int + 852-2736-9332  
**Email:** sales@carlingtech.com.hk

**Shenzhen, China:** shenzhen@carlingtech.com  
**Shanghai, China:** shanghai@carlingtech.com  
**Pune, India:** india@carlingtech.com  
**Kaohsiung, Taiwan:** taiwan@carlingtech.com  
**Yokohama, Japan:** japan@carlingtech.com

## **Europe | Middle East | Africa Headquarters**

Carling Technologies LTD  
4 Airport Business Park, Exeter Airport,  
Clyst Honiton, Exeter, Devon, EX5 2UL, UK  
**Phone:** Int + 44 1392.364422 **Fax:** Int + 44 1392.364477  
**Email:** ltd.sales@carlingtech.com

**Germany:** gmbh@carlingtech.com  
**France:** sas@carlingtech.com



**Carling Technologies®**

Innovative Designs. Powerful Solutions.