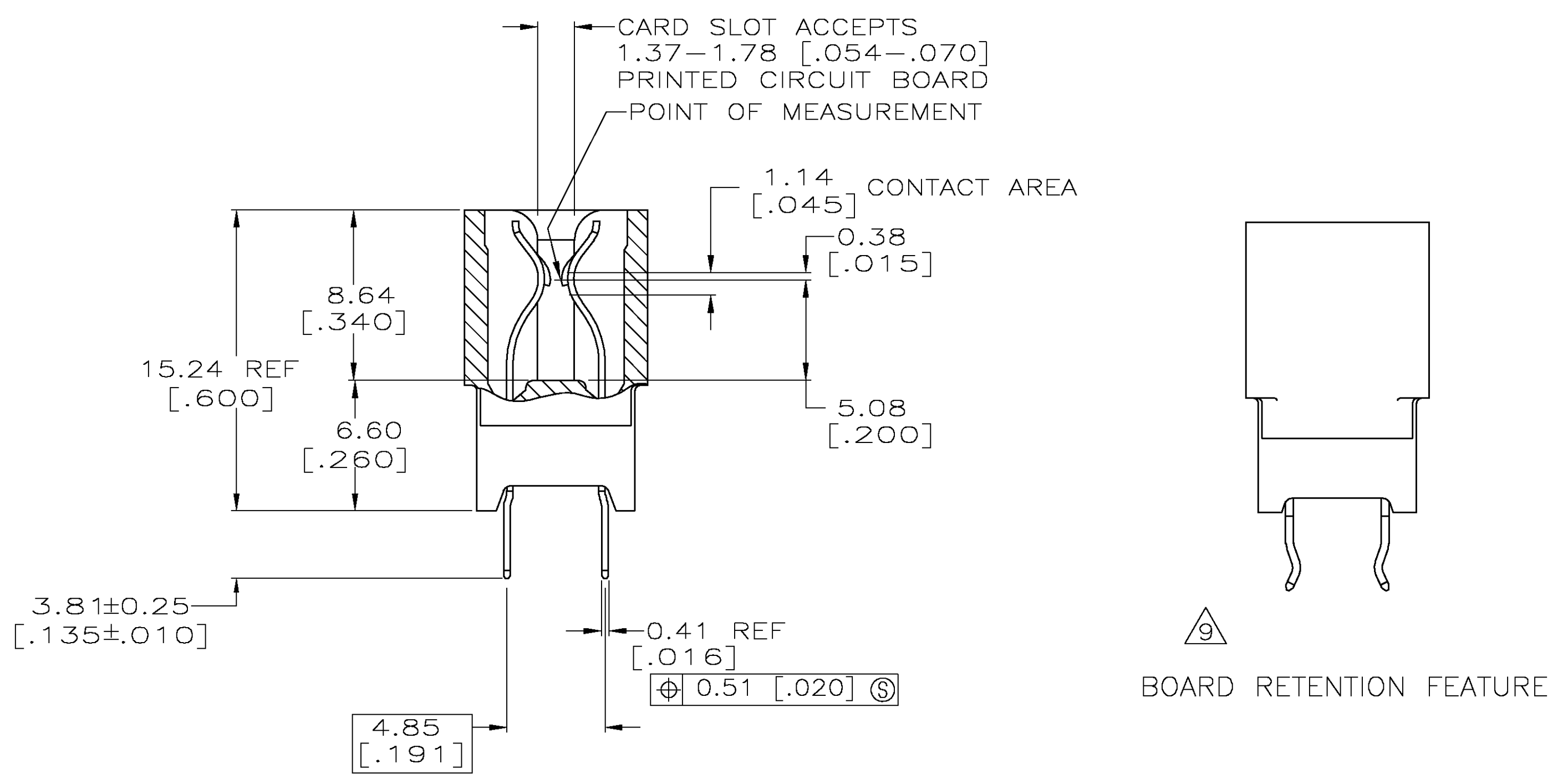
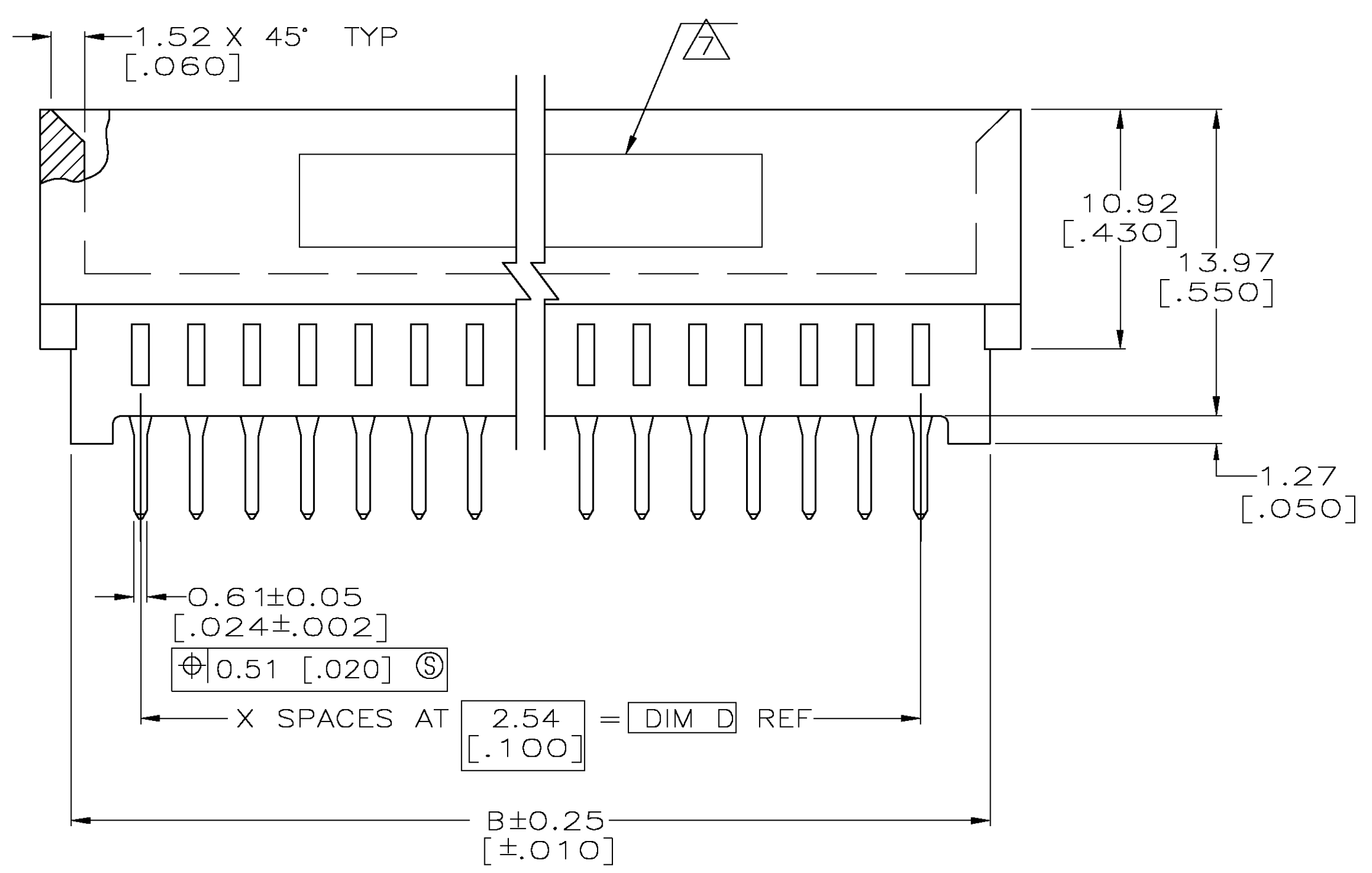
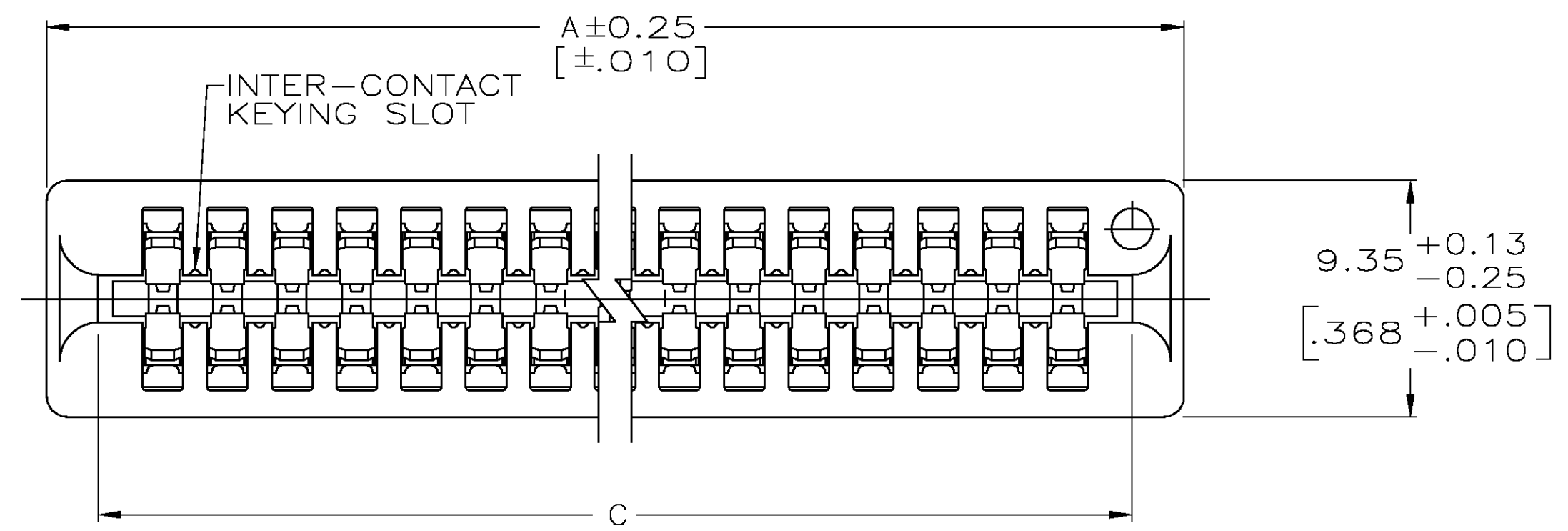


LOC		DIST		REVISONS			
GP	00	P	LTR	DESCRIPTION	DATE	BY	APVD
B				OBSOLETE -2 PER 0512-0060-05	13 MAY 05	AWF	AWF

- ① HOUSING: GLASS FILLED POLYESTER; COLOR: BLACK.
- ② CONTACT: PHOSPHOR BRONZE.
- ③ NICKEL UNDERPLATE: 0.00127 [.000050] MIN - ALL OVER.
- ④ MATTE TIN PLATE: 0.00254 [.000100] MIN - SOLDER POSTS.
- ⑤ GOLD PLATE: 0.00076 [.000030] MIN - CONTACT AREA.
- ⑥ NICKEL PLATE PER MIL-G-45204. GOLD PLATE PER QQ-N-290.
- ⑦ AMP PART NUMBER, DATE CODE AND CSA LOGO ARE MARKED IN APPROXIMATE AREA SHOWN, EITHER SIDE.
- 8. RECOMMENDED PCB FINISHED HOLE DIA: 1.02±0.08 [.040±.003].
- ⑨ THE RETENTION FEATURE OF THIS CONNECTOR IS DESIGNED FOR FULL SEATING IN A .062±.008 THICK CIRCUIT BOARD, #119231-1 H.



OBSOLETE	3,4,47,48	60.96 [2.400]	66.04 [2.600]	67.31 [2.650]	70.10 [2.760]	24	25	5145274-2
	3,4,23,24	30.48 [1.200]	35.56 [1.400]	36.83 [1.450]	39.62 [1.560]	12	13	5145274-1
	RETENTION FEATURE LOCATION	D	C	B	A	X	NO OF POSN	PART NUMBER

THIS DRAWING IS A CONTROLLED DOCUMENT.

DIMENSIONS: mm	TOLERANCES UNLESS OTHERWISE SPECIFIED:	0 PLC ± -	1 PLC ± -	2 PLC ± 0.13 [.005]	3 PLC ± -	4 PLC ± -	ANGLES ± °
MATERIAL	FINISH	DIN AL FRANTUM 13 MAY 05		CIS AL FRANTUM 13 MAY 05		APVD	
CUSTOMER DRAWING		Tyco Electronics Corporation Harrisburg, Pa 17105-3608		NAME		RESTRICTED TO	
		PRODUCT SPEC 108-9039		APPLICATION SPEC		SIZE CAGE CODE DRAWING NO	
		A1 00779		C=5145274		SCALE 4:1 SHEET 1 OF 1 REV B	