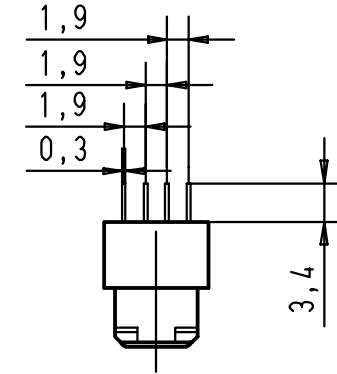
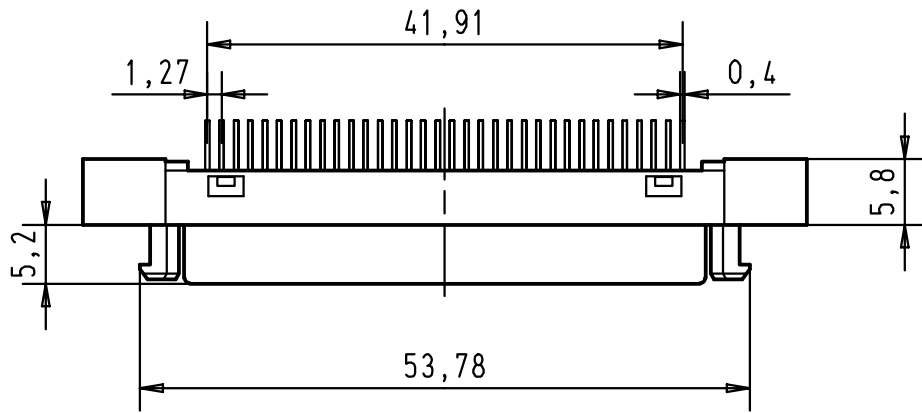
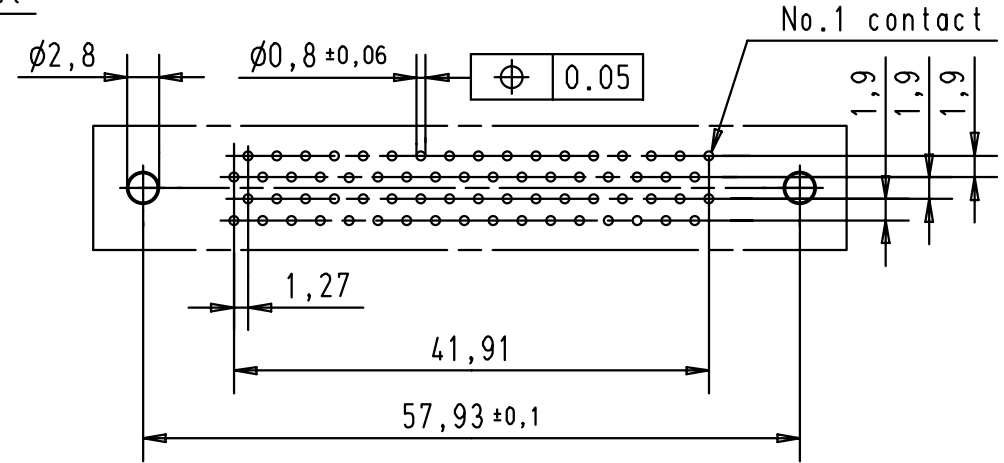
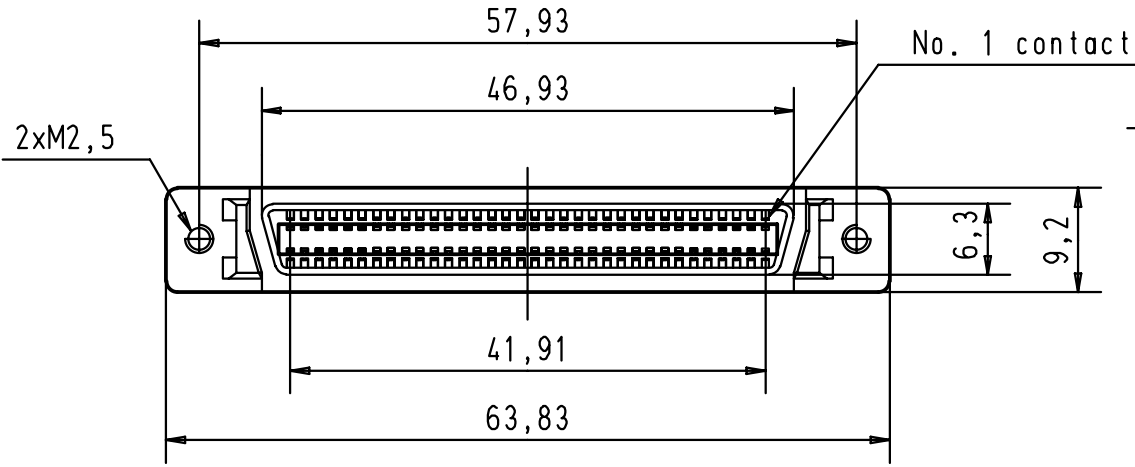
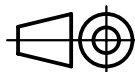



5 4 3 2 1

Printed board layout
Component side



D
C
B
A

						 All Dim. in mm Orig. Size DIN A 4	har.mik® I/O bellow 68 poles female connector with straight solder pins and fixed latching	Maßstab/ Scale 1,5:1
			Detail.	21 JUN 01	S G			
			Insp.					
			Stand.					
			27686	21 JUN 01	S G		TB 60 11 068 5102	Blatt/ Page 1/1
			Mod.	Dat.	Name			

HARTING EURL
F-95972 Paris



TB 60 11 068 5102

Sub.