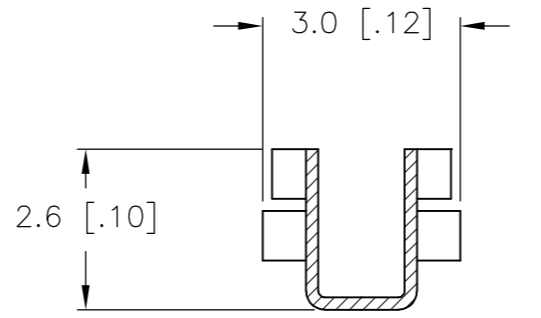
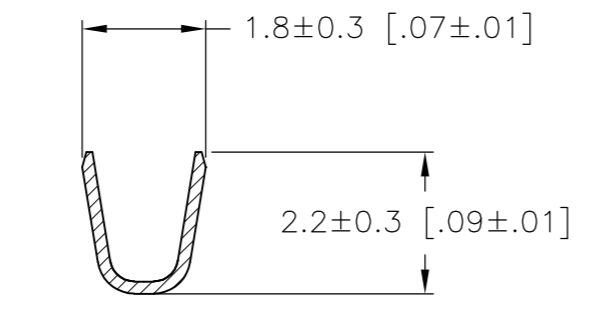
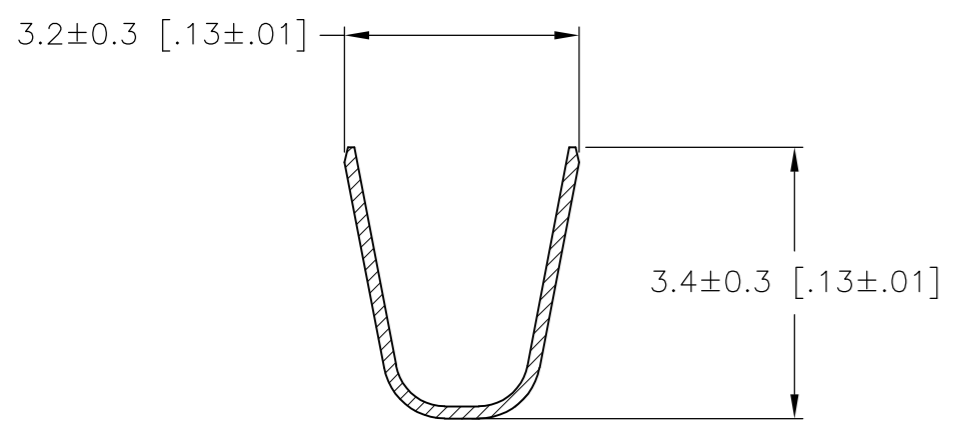
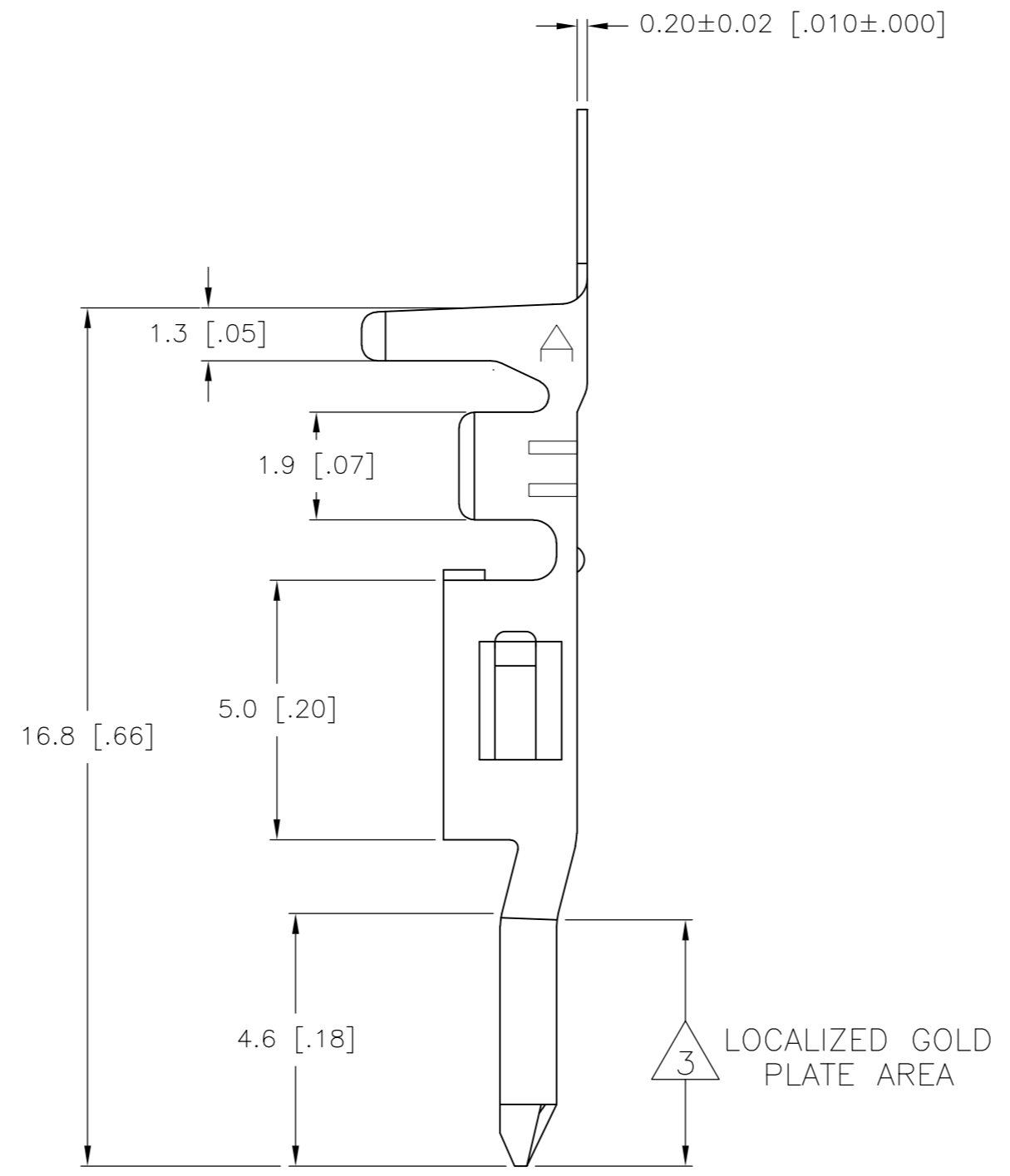
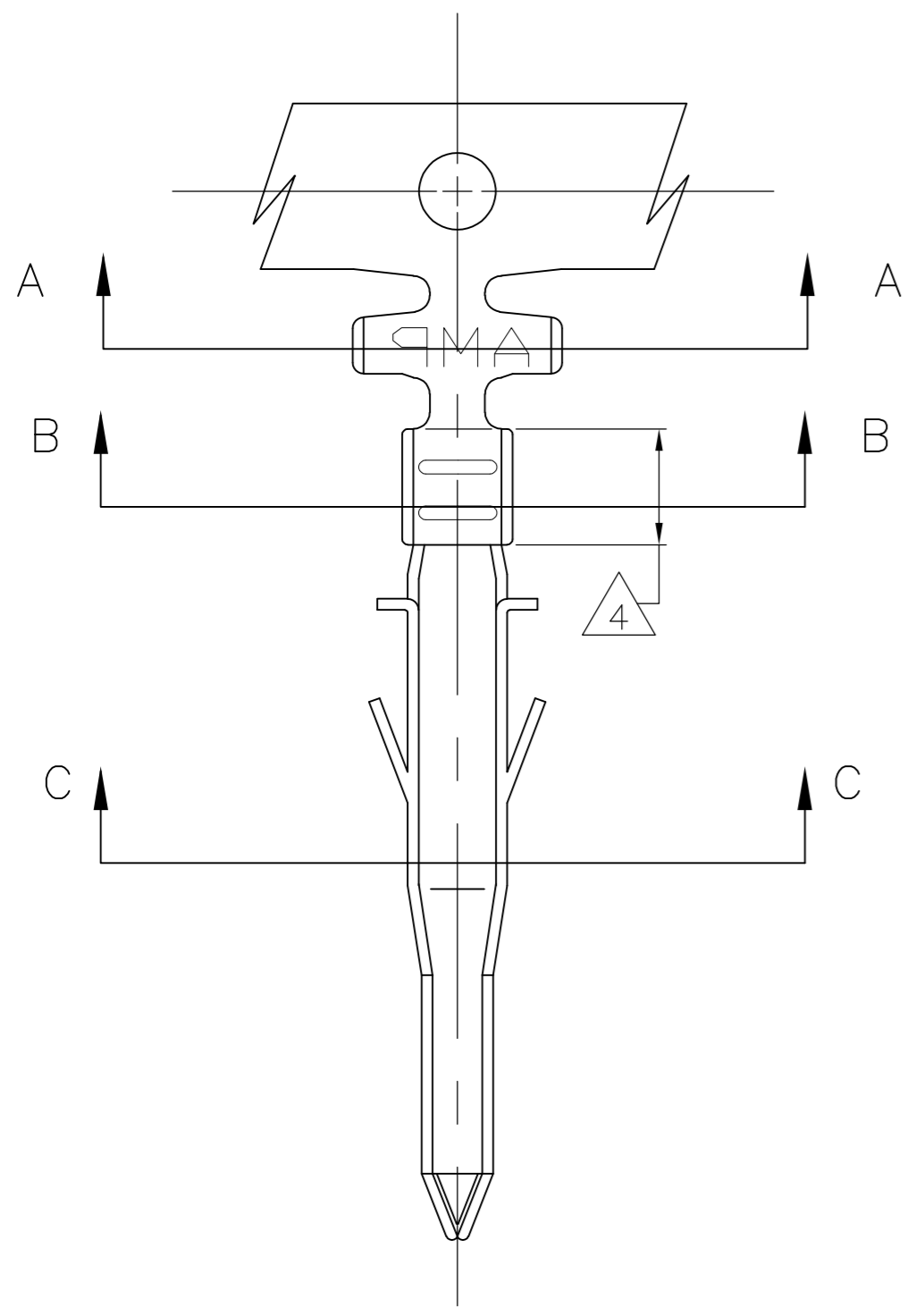


THIS DRAWING IS UNPUBLISHED. RELEASED FOR PUBLICATION  
 © COPYRIGHT - By - ALL RIGHTS RESERVED.

LOC	DIST	REVISIONS					
CM	00	P	LTR	DESCRIPTION	DATE	DWN	APVD
		F2		REVISED PER ECO-11-005027	11MAR11	RK	HMR

- 1 WIRE RANGE: 0.13–0.32mm<sup>2</sup> (26–22 AWG).
- 2 INSULATION RANGE: 1.20–1.75 DIA.
- 3 FINISH: 0.76µm MINIMUM GOLD IN LOCALIZED GOLD PLATE AREA OVER 1.27µm MINIMUM NICKEL
- 4 FINISH: 2.54µm MINIMUM PRE-TIN IN LOCALIZED TIN PLATE AREA.
- 5 FINISH: 2.54µm MINIMUM PRE-TIN ALL OVER.



GOLD 3 4	PHOS. BRZ.	794957-4
PRE-TIN 5	PHOS. BRZ.	794957-3
GOLD 3 4	BRASS	794957-2
PRE-TIN 5	BRASS	794957-1
FINISH:	MATERIAL:	PART NO.

SECTION A-A

SECTION B-B

SECTION C-C



THIS DRAWING IS A CONTROLLED DOCUMENT.

DIMENSIONS: mm [INCHES]	TOLERANCES UNLESS OTHERWISE SPECIFIED: 0 PLC ± 1 PLC ± 2 PLC ± 0.25 [010] 3 PLC ± 0.15 [.006] 4 PLC ± 0.050 [.0020] ANGLES ±	DWN S. HAMM 06-SEP-2001 CHK D. COLEY 07-SEP-2001 APVD D. COLEY 07-SEP-2001 PRODUCT SPEC APPLICATION SPEC	TE Connectivity	
MATERIAL	FINISH	WEIGHT	SIZE A2	CAGE CODE 00779
CUSTOMER DRAWING		SCALE 10:1	DRAWING NO C=794957	RESTRICTED TO -
			SHEET 1 OF 1	REV F2