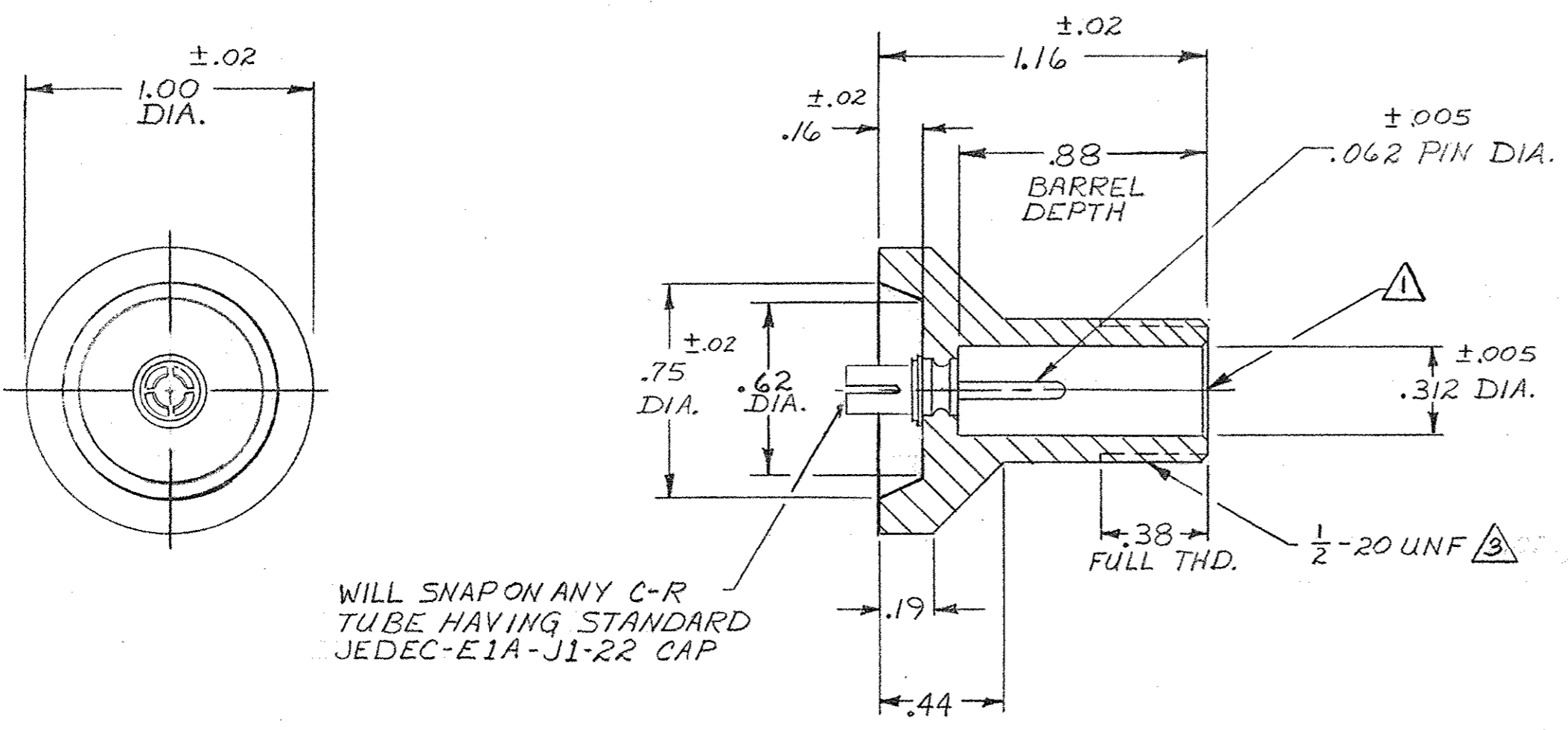


©1971 BY AMP INCORPORATED. ALL RIGHTS RESERVED. AMP PRODUCTS COVERED BY PATENTS AND/OR PATENTS PENDING.

THIS PRODUCT DESIGNED AND BUILT BY AMP INCORPORATED. NO LICENSE TO USE THAT DESIGN IN MANUFACTURE, OR TO USE ANY ISSUED OR PENDING PATENTS WHICH ARE INVOLVED, IS IMPLIED.

Unpublished copy not to be reproduced without written permission of AMP Incorporated

REVISIONS				
ZONE	LTR	DESCRIPTION	DATE	APPROVED
	A	NOTE 2 ADDED.	OBS, 10-18-72	M.A.
	B	REV. PER E.C.N. 8681	AG 3-2-79	M.A.
	C	REV. CONTACT	RM 8/14/80	M.A.
	D	REV PER ECN S-3960	4-15-87	RS
	E	OBS-1 ECN OF 0376	2P 2-89	T.W.
	F	REV PER OH14-0192-05	1-06	PY



WILL SNAP ON ANY C-R TUBE HAVING STANDARD JEDEC-E1A-J1-22 CAP

1. RECEPTACLE TO MATE WITH AMP LGH-1 LEAD ASSEMBLY, AVAILABLE SEPARATELY.

2. PLATED PARTS ARE TO BE DE-BURRED BEFORE PLATING IN ALL CASES.

3. PER FEDERAL STANDARD H-28 3 WIRE METHOD. DIMENSION OVER WIRES TO BE .497-.510.

5-859956-2	AS SHOWN WITH GOLD PLATED PIN PER ASTM-B-488, TYPE II, CLASS 5.0 & TIN PLATED TERMINAL PER ASTM-B-545 .00015 THK
859956-2	AS SHOWN W/GOLD PLATED PIN PER ASTM-B-488, TYPE II, CLASS 5.0 & 93/7 TIN-LEAD PLATED TERMINAL .00015 THK
OBS 859956-1	AS SHOWN W/TIN PLATED PIN PER ASTM-B-545, .0001 THK & 93/7 TIN-LEAD PLATED TERMINAL .00015 THK

ITEM NO.	DWG SIZE	PART OR IDENTIFYING NO.	NOMENCLATURE OR DESCRIPTION	SYMBOL
PARTS LIST				
CONTRACT NO. DR <i>L. Seitz 521-71</i> CHK APPD <i>Z. Johnson 5/24/71</i> APPD			AMP AMP INCORPORATED CAPITRON DIVISION ELIZABETHTOWN, PENNSYLVANIA	
MATERIAL: MOLDED GLASS EPOXY FINISH: BLACK			NAME LGH-1 RECEPTACLE WITH J1-22 C-R TUBE CONTACT LGH	
DSGN APPD OTHER APPD			SIZE C	CODE IDENT NO. 00779
NEXT ASSY FINAL ASSY NEXT ASSY USED ON			NUMBER 859956	SCALE <i>H</i> WT SHEET 1 OF 1

UNLESS OTHERWISE SPECIFIED: DIMENSIONS ARE IN INCHES TOLERANCES			
.00 = ±	ANGLES = <i>T</i>		
.000 = ±			
QTY REQD	APPLICATION		