

**PROPERTY OF DEUTSCH E.C.D.**

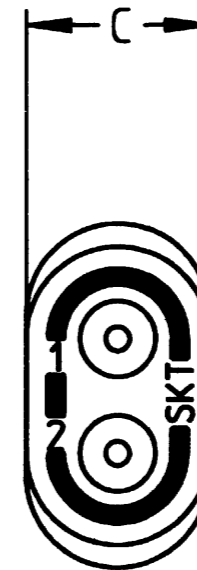
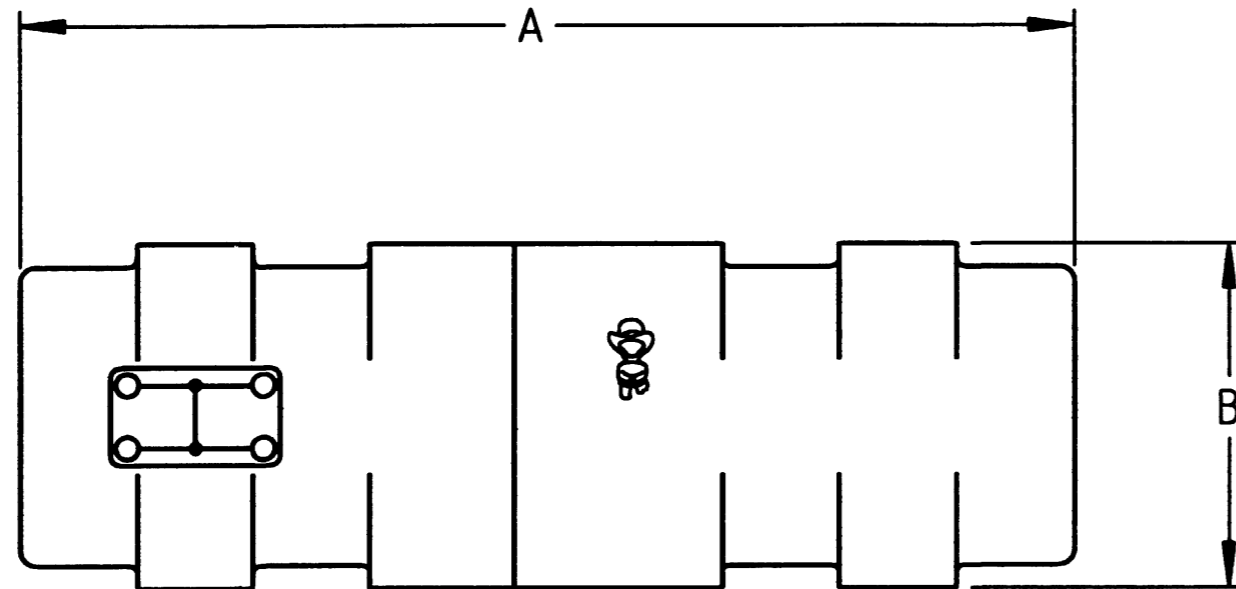
This drawing contains proprietary information that shall not be disclosed, duplicated, nor used in whole or in part for any purpose other than to evaluate this drawing.

D

CTM- \*\*

REVISIONS

REV	DESCRIPTION	DATE	APPROVED
D	REVISED AND REDRAWN PER E.O. C2127	1-22-96	§



6. PART MARKING TO INCLUDE SCHEMATIC, "SKT", "DEUTSCH" OR DEUTSCH LOGO ONLY. ALL OTHER REQUIRED MARKING TO APPEAR ON PACKAGE LABEL ONLY.

5. SOCKET CONTACT PART NUMBERS: (5 SUPPLIED WITH EACH JUNCTION)

SIZE	CONTACT
22	CTS-S22/22
20	CTS-S20/20
16	CTS-S16/16
12	CTS-S12/12

PART NUMBER	SIZE **	A ± .060	B ± .030	C ± .030
CTM-22	22	1.262	.354	.210
CTM-20	20	1.368	.451	.241
CTM-16	16	1.368	.513	.274
CTM-12	12	1.644	.644	.337

4. REQUIRED CONTACT TOOL PART NUMBERS:

SIZE	INSERTION/EXTRACTION TOOL
22	M89169/14-01
20	M89169/14-10
16	M15570-16
12	81515-12

3. FOR CONTACT DATA, SEE ENVELOPE DWG. 1625-1-0000.

2. SEE "GENERAL DESCRIPTION" FOR ELECTRICAL AND MATERIAL SPECIFICATION.

1. DIMENSIONS ARE IN INCHES UNLESS OTHERWISE SPECIFIED.

SIGNATURE & DATE	
DR	JOHN NOTT 4-19-76
CHK	Jobell 1-22-96
PE	J. MACDONALD 4-19-76
APPD	
SCALE	NONE
WT	---

**MULTI - JUNCTION**  
COMPLETE TERMINATION JUNCTION

ENVELOPE

CP	MATL CODE
<b>DEUTSCH</b> ENGINEERED CONNECTING DEVICES 36033 Whittier Ave. Hemet, California	
<b>A</b> DMG SIZE	CTM- **
CODE 1139	SHEET 1 OF 1

CTM-XX-env\_D