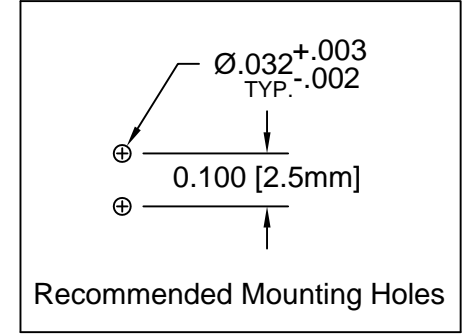
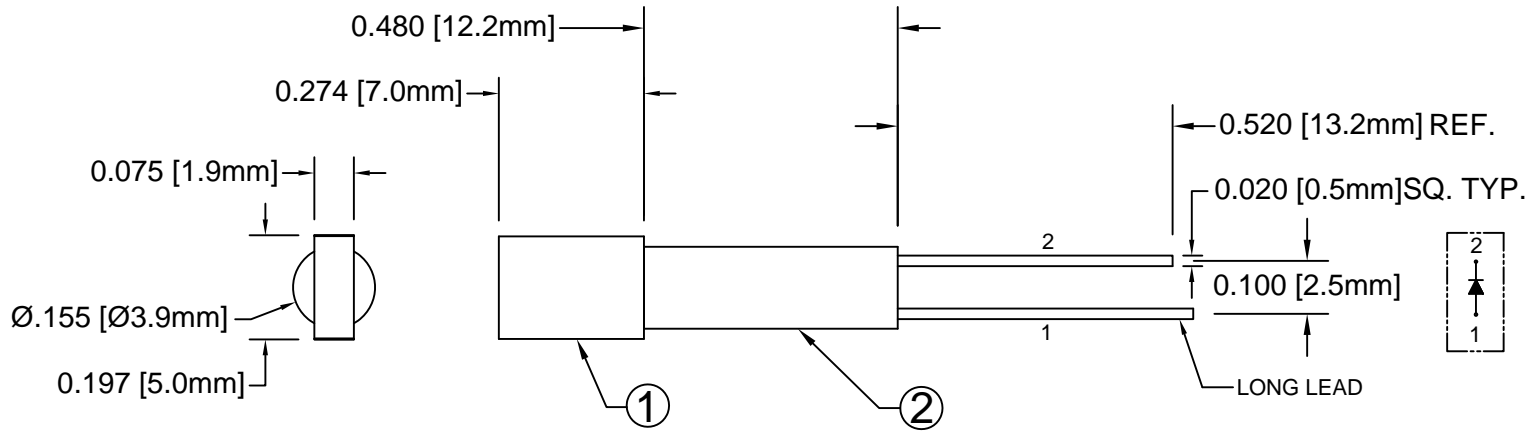


ITEM	Q'TY	PART NUMBER	PART DESCRIPTION
1	1	R5YD	2 x 5mm Rectangular LED
2	1	ELM 5-480	Extruded, Self-Retaining Narrow LED Spacer

REV.	DESCRIPTION	DATE	APPROVED
A	Engineering Release	04/02/10	T. Y.
B	Engineering Update w/o Changes	05/25/16	J. C.



Chip			Lens Appearance	Absolute Max. Ratings			Electro-Optical Data @ 20mA			Viewing Angle 2 $\theta$ 1/2 (Deg)
Emitted Color	Peak Wave Length $\lambda_p$ (nm)	Material		Pd (mW)	If (mA)	Peak If(mA)	Vf (V)		Iv (mcd)	
YELLOW	590	GaAsP/GaP	85	30	150	TYP	MAX	TYP	120	
						2.0	2.8	8		

### ABSOLUTE MAXIMUM RATINGS (Ta=25°C)



REVERSE VOLTAGE \_\_\_\_\_ 5V

REVERSE CURRENT \_\_\_\_\_ 100uA

OPERATING TEMPERATURE RANGE \_\_\_\_\_ -25° C - 85° C

STORAGE TEMPERATURE \_\_\_\_\_ -30° C - 100° C

LEAD SOLDERING TEMPERATURE(1/16" FROM BODY) \_\_\_\_\_ 260° C FOR 5 SECONDS

STANDARD TOLERANCE (UNLESS OTHERWISE SPECIFIED)		 4 THOMAS, IRVINE, CA. 92618 TEL: (949) 951-8808 FAX: (949) 951-3974			
DECIMALS	ANGULAR				
.X ± .1	X° ± 1°	 <b>TITLE: EXTRUDED VERTICAL RCT 2X5 LED NARROW SPACER PROFILE ASSY</b>			
.XX ± .02					
.XXX ± .010		DESIGNED: <b>R. Paje</b>	DATE: <b>04/02/10</b>	PART NO: <b>ELM5480R5YD</b>	REVISION: <b>B</b>
		CHECKED: <b>T. Yin</b>	DATE: <b>04/02/10</b>	CAGE CODE : <b>32559</b>	SHEET # <b>1 OF 1</b>
CAD GENERATED DOCUMENT. DO NOT MEASURE DRAWING.					