

Customer Information Sheet

DRAWING No.: M50-363XX42X

SHEET 2 OF 4

IF IN DOUBT - ASK

©

NOT TO SCALE

THIRD ANGLE PROJECTION

ALL DIMENSIONS IN mm

SPECIFICATION:

MATERIAL:
 MOULDING = PA9T, UL94V-0, BLACK
 CONTACT = BRASS
 FINISH = 0.76-1.52µ NICKEL ALL OVER,
 0.012µ MIN GOLD ON CONTACT AREA,
 2.54-5.08µ 100% TIN ON TAILS

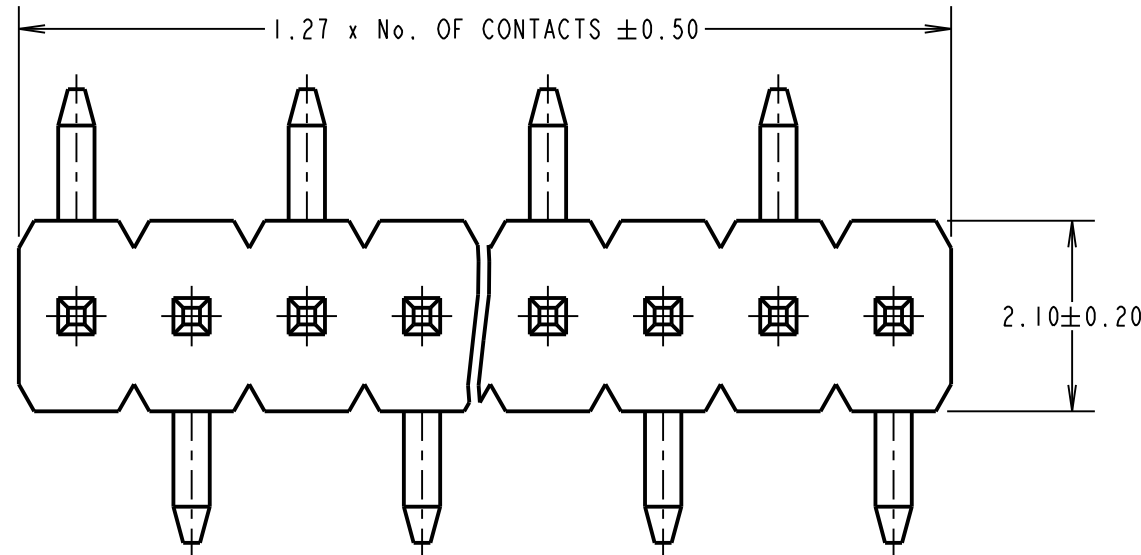
ELECTRICAL:
 CURRENT RATING = 1A
 CONTACT RESISTANCE = 20mΩ MAX
 INSULATION RESISTANCE = 1000MΩ MAX
 VOLTAGE PROOF = 500V AC FOR ONE MINUTE

MECHANICAL:
 DURABILITY = 500 CYCLES

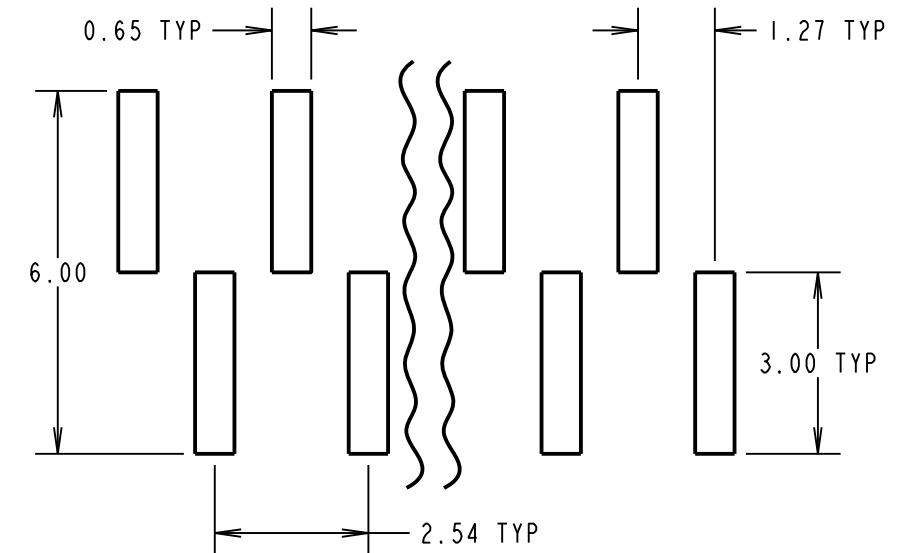
ENVIRONMENTAL:
 OPERATING TEMPERATURE = -40°C TO +105°C

PACKING:
 SEE ORDER CODE
 FOR COMPLETE SPECIFICATION, SEE COMPONENT SPECIFICATION C029XX (LATEST ISSUE)

NOTES:
 1. FOR TAPE AND REEL DETAILS, SEE SHEET 4.



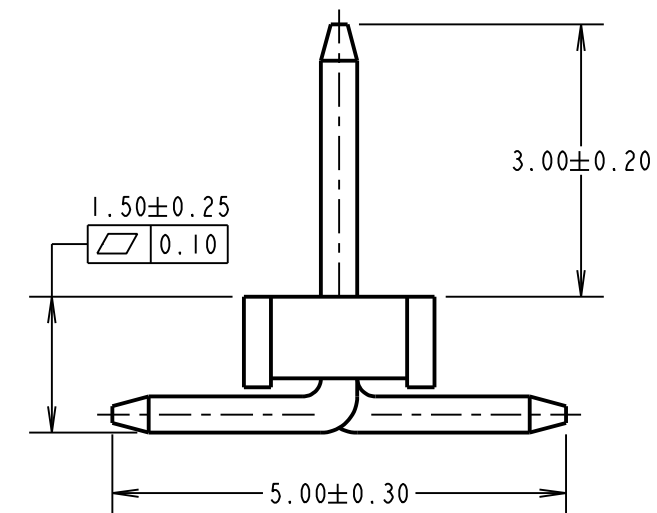
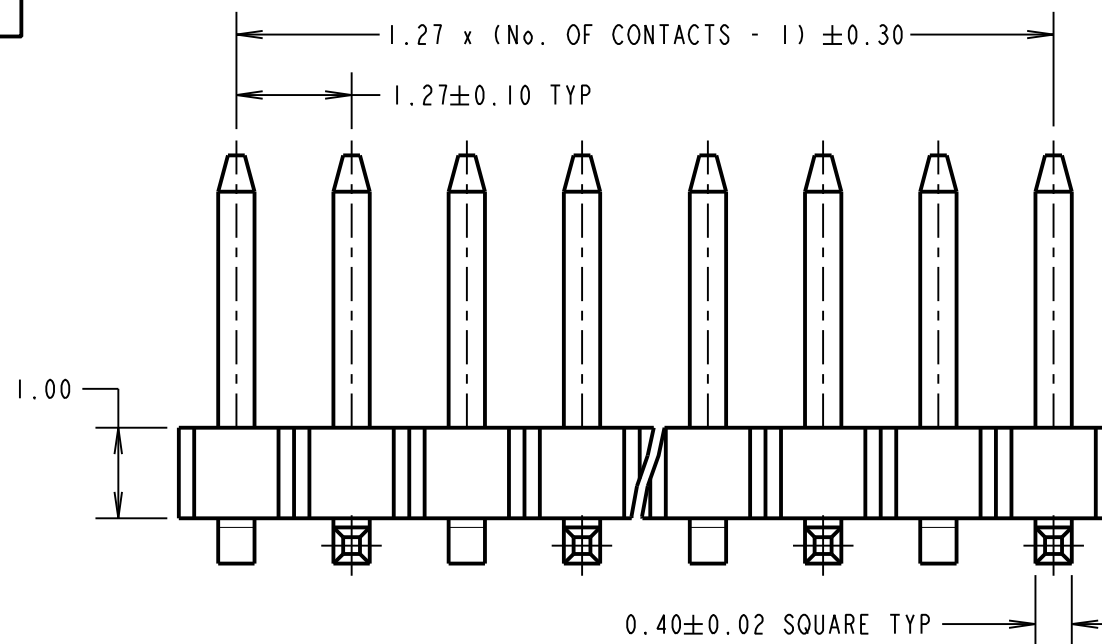
RECOMMENDED PCB LAYOUT
 (TOLERANCE = ±0.05)



ORDER CODE:
M50-363XX42X

No. OF CONTACTS: _____
 02 TO 06, 08, 10, 20

PACKING: _____
 BLANK = TUBE
 R = TAPE AND REEL (SHEET 4)



SB	1	02.08.16	-----
NAME	ISS.	DATE	C/NOTE
APPROVED:		S.BENNETT	
CHECKED:		M.PLESTED	
DRAWN:		S.BENNETT	
CUSTOMER REF.:			
ASSEMBLY DRG:			

 www.harwin.com technical@harwin.com	THIS DRAWING AND ANY INFORMATION OR DESCRIPTIVE MATTER SET OUT HEREON ARE CONFIDENTIAL AND COPYRIGHT PROPERTY OF THE HARWIN GROUP AND MUST NOT BE DISCLOSED, LOANED, COPIED OR USED FOR MANUFACTURING, TENDERING OR FOR ANY OTHER PURPOSE WITHOUT THEIR WRITTEN PERMISSION.	TOLERANCES X. = ±1mm X.X = ±0.50mm X.XX = ±0.10mm X.XXX = ±0.01mm ANGLES = ±5° UNLESS STATED	MATERIAL: SEE ABOVE	TITLE: 1.27mm PITCH, SIL VERTICAL SMT HEADER
		FINISH: SEE ABOVE S/AREA: mm ²	DRAWING NUMBER: M50-363XX42X	SHT 3 OF 4

Customer Information Sheet

DRAWING No.: M50-363XX42X

SHEET 4 OF 4

IF IN DOUBT - ASK

Ⓢ

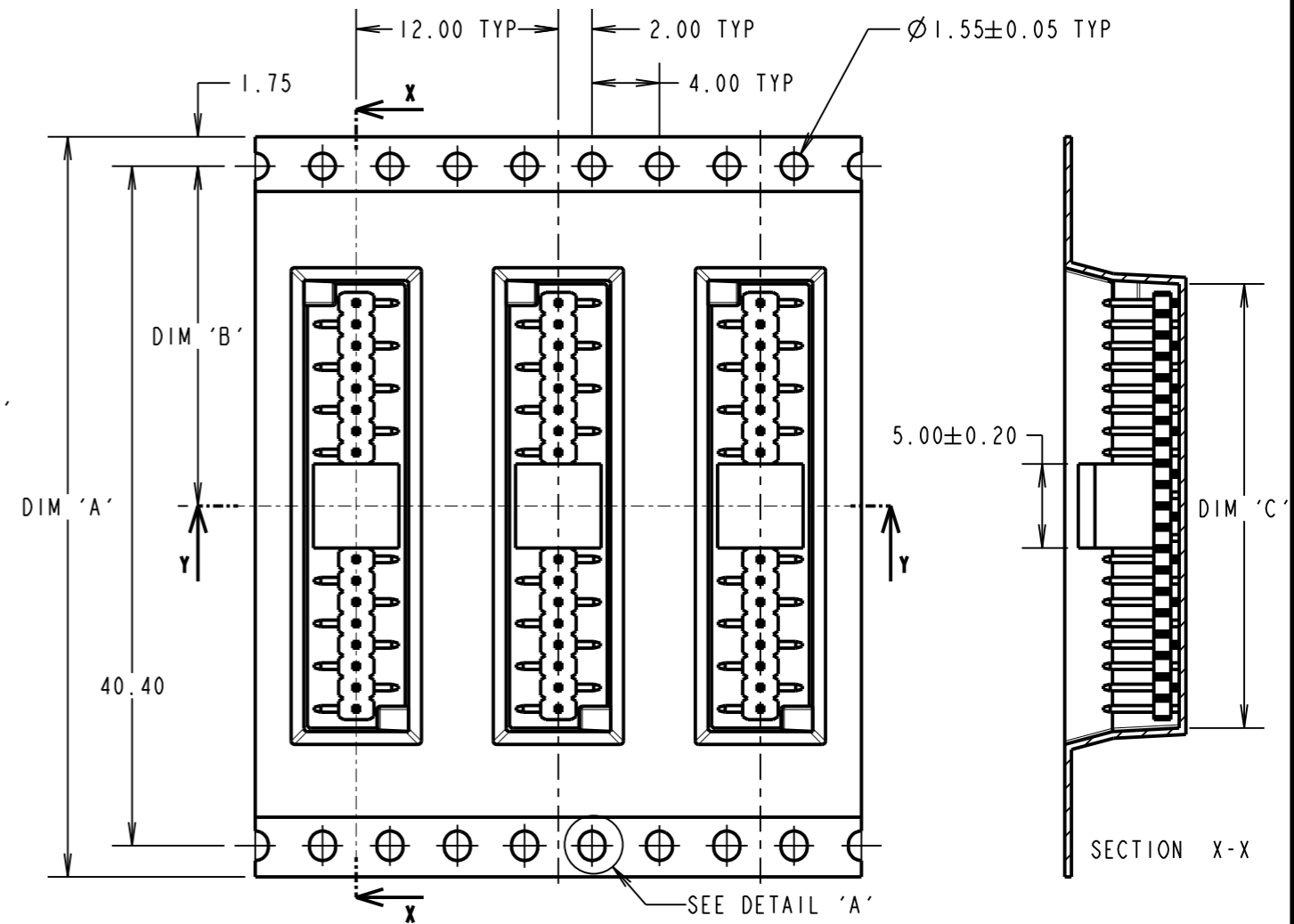
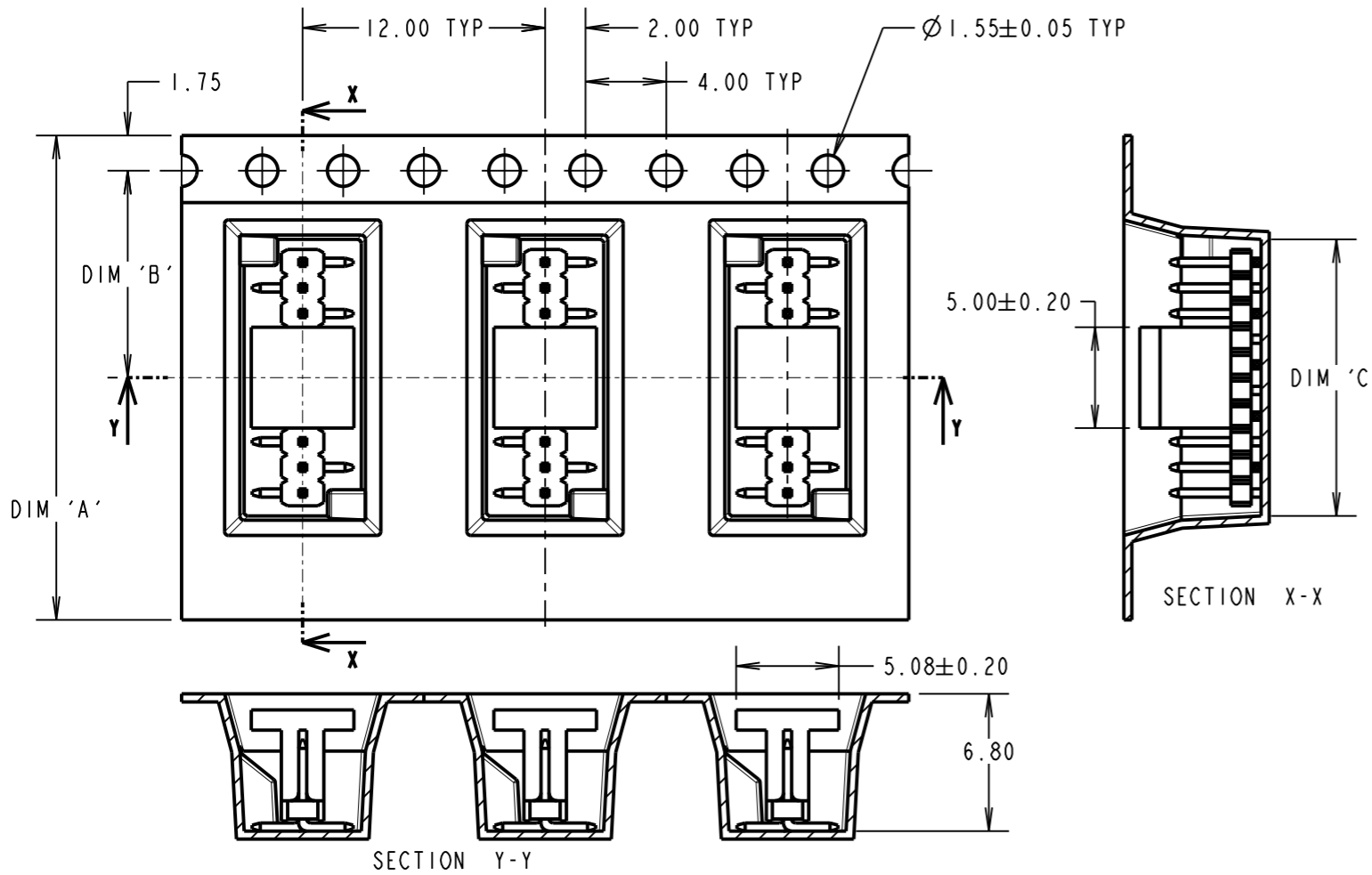
NOT TO SCALE

THIRD ANGLE PROJECTION

ALL DIMENSIONS IN mm

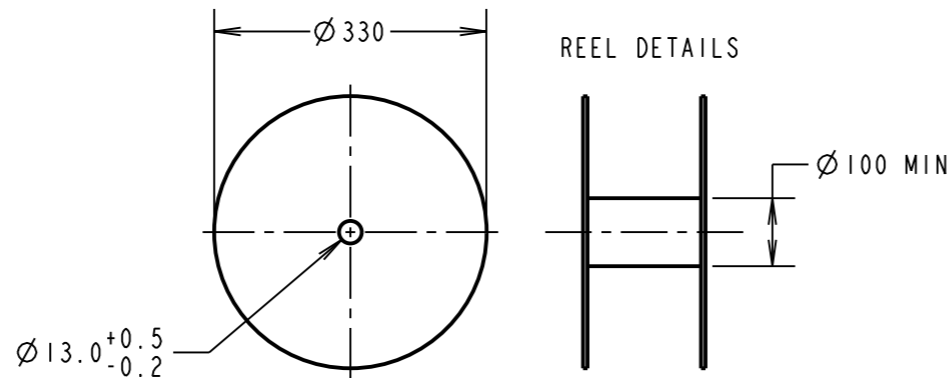
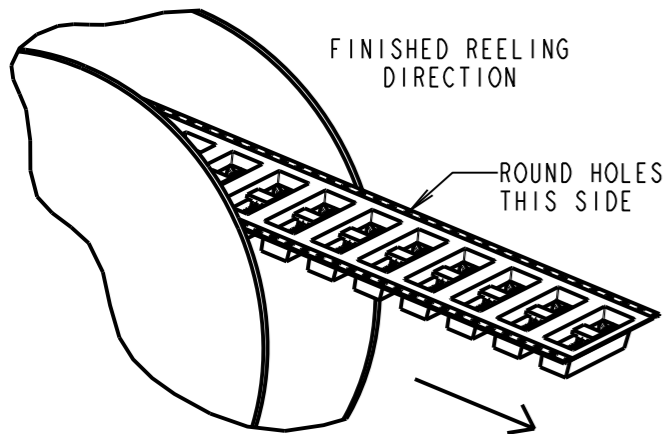
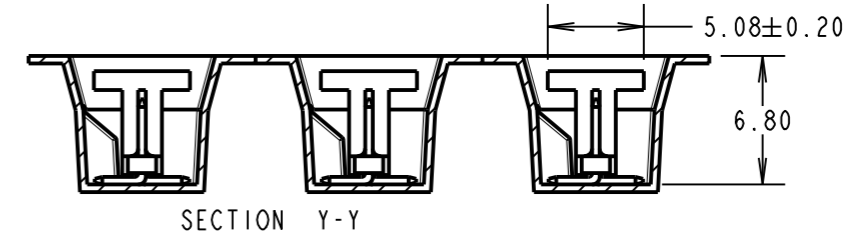
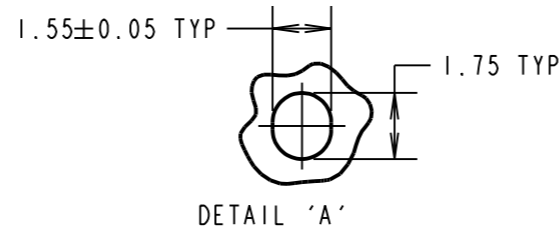
TAPE DETAILS FOR
02, 03, 04, 05, 06, 08 & 10 WAYS ONLY

TAPE DETAILS FOR 20 WAY ONLY



- NOTES:
1. FOR CONNECTOR DETAILS AND SPECIFICATIONS, SEE SHEET 3.
2. PRODUCT IS TAPE AND REELED IN GENERAL ACCORDANCE WITH EIA-481 (ELECTRAL INDUSTRIES ASSOCIATION).

ORDER CODE: **M50-363XX42X**
No. OF CONTACTS: _____
02 TO 06, 08, 10, 20
PACKING: _____
BLANK = TUBE
R = TAPE AND REEL (SHEET 1)



PART No.	DIMENSION			REEL QUANTITY
	DIM 'A'	DIM 'B'	DIM 'C'	
M50-3630242R	16.00±0.30	7.50	3.54	800
M50-3630342R			4.81	
M50-3630442R			6.08	
M50-3630542R	24.00±0.30	11.50	7.35	
M50-3630642R			8.62	
M50-3630842R			11.16	
M50-3631042R	44.00±0.30	20.20±0.15	13.70	
M50-3632042R			26.40	

SB	1	02.08.16	-----
NAME	ISS.	DATE	C/NOTE
APPROVED:		S.BENNETT	
CHECKED:		M.PLESTED	
DRAWN:		S.BENNETT	
CUSTOMER REF.:			
ASSEMBLY DRG:			

HARWIN

www.harwin.com
technical@harwin.com

THIS DRAWING AND ANY INFORMATION OR DESCRIPTIVE MATTER SET OUT HEREON ARE CONFIDENTIAL AND COPYRIGHT PROPERTY OF THE HARWIN GROUP AND MUST NOT BE DISCLOSED, LOANED, COPIED OR USED FOR MANUFACTURING, TENDERING OR FOR ANY OTHER PURPOSE WITHOUT THEIR WRITTEN PERMISSION.

TOLERANCES
X. = ±1mm
X.X = ±0.50mm
X.XX = ±0.10mm
X.XXX = ±0.01mm
ANGLES = ±5°
UNLESS STATED

MATERIAL:
SEE ABOVE
FINISH: SEE ABOVE
S/AREA: mm²

TITLE:
1.27mm PITCH, SIL VERTICAL SMT HEADER

DRAWING NUMBER:
M50-363XX42X

SHT
4 OF 4